

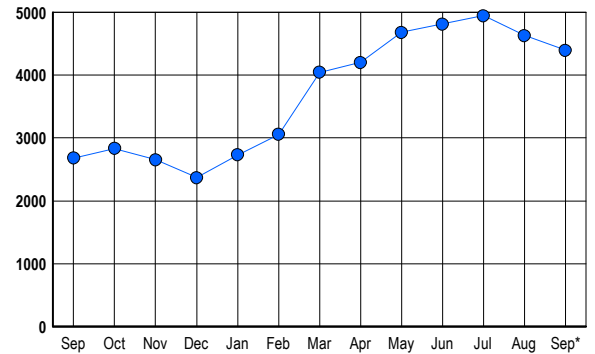


LISTINGS

Prices Range	New This Month			Total Actives		
	2006	2005	% Change	2006	2005	% Change
0 - 149,999	1	9	-88.9	1	16	-93.8
150,000 - 199,999	1	1	0.0	2	0	200.0
200,000 - 299,999	92	133	-30.8	310	161	92.5
300,000 - 399,999	396	552	-28.3	1,326	709	87.0
400,000 - 499,999	291	437	-33.4	1,042	639	63.1
500,000 - 599,999	191	268	-28.7	763	451	69.2
600,000 - 699,999	108	185	-41.6	442	368	20.1
700,000 - 799,999	53	92	-42.4	239	179	33.5
800,000 - 899,999	26	27	-3.7	109	66	65.2
900,000 - 999,999	11	15	-26.7	65	33	97.0
1,000,000 - 1,249,999	9	12	-25.0	44	36	22.2
1,250,000 - 1,499,999	6	5	20.0	30	14	114.3
1,500,000 +	2	1	100.0	20	6	233.3
TOTALS	1187	1737	-31.7	4393	2678	64.0

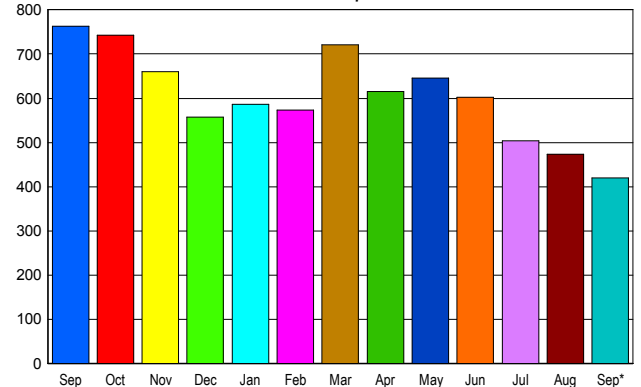
INVENTORY TREND

Listings Active at End of Month



SALES TREND

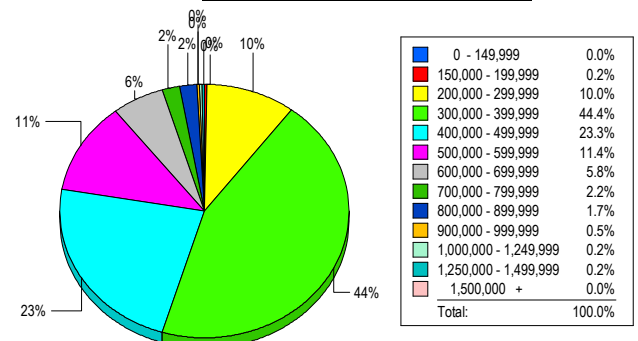
Contracts Ratified Per Month



CONTRACTS

Price Range	New This Month			Year-To-Date		
	2006	2005	% Change	2006	2005	% Change
0 - 149,999	0	0	0.0	3	2	50.0
150,000 - 199,999	2	1	100.0	9	17	-47.1
200,000 - 299,999	51	84	-39.3	494	1,302	-62.1
300,000 - 399,999	182	311	-41.5	2,073	3,260	-36.4
400,000 - 499,999	100	166	-39.8	1,104	1,612	-31.5
500,000 - 599,999	42	103	-59.2	657	1,110	-40.8
600,000 - 699,999	25	56	-55.4	340	570	-40.4
700,000 - 799,999	11	18	-38.9	142	212	-33.0
800,000 - 899,999	2	9	-77.8	81	73	11.0
900,000 - 999,999	2	8	-75.0	18	49	-63.3
1,000,000 - 1,249,999	2	4	-50.0	19	29	-34.5
1,250,000 - 1,499,999	1	1	0.0	10	11	-9.1
1,500,000 +	0	2	-100.0	2	10	-80.0
TOTALS	420	763	-45.0	4952	8257	-40.0

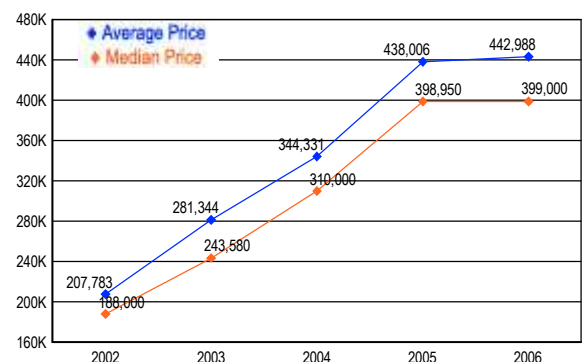
MARKET BY PRICE RANGE



SETTLEMENTS

Price Range	New This Month			Year-to-Date		
	2006	2005	% Change	2006	2005	% Change
0 - 149,999	0	0	0.0	4	4	0.0
150,000 - 199,999	1	0	100.0	6	20	-70.0
200,000 - 299,999	41	97	-57.7	444	1,178	-62.3
300,000 - 399,999	183	285	-35.8	2,091	3,198	-34.6
400,000 - 499,999	96	151	-36.4	1,153	1,615	-28.6
500,000 - 599,999	47	110	-57.3	684	1,086	-37.0
600,000 - 699,999	24	50	-52.0	363	551	-34.1
700,000 - 799,999	9	19	-52.6	140	202	-30.7
800,000 - 899,999	7	5	40.0	86	70	22.9
900,000 - 999,999	2	8	-75.0	25	45	-44.4
1,000,000 - 1,249,999	1	4	-75.0	23	25	-8.0
1,250,000 - 1,499,999	1	0	100.0	10	6	66.7
1,500,000 +	0	0	0.0	6	3	100.0
TOTALS	412	729	-43.5	5035	8003	-37.1

AVERAGE & MEDIAN PRICE



DATA SOURCE: Metropolitan Regional Information Systems, Inc. (MRIS)

NOTES: Properties not listed through this Multiple Listing Service are not reflected. The term "sales" represents ratified purchase contracts. Current year information is preliminary and subject to revision. Current year- to- date contract information may not equal the sum of the monthly contract totals reported in