

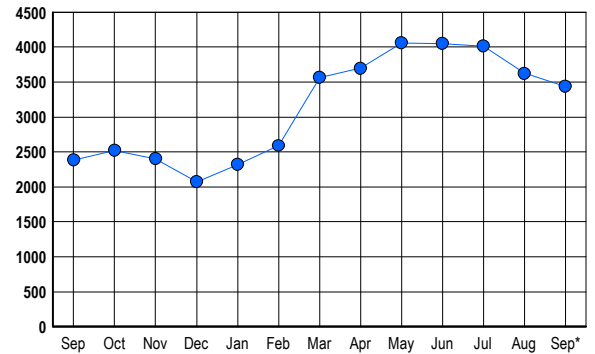


LISTINGS

Prices Range	New This Month			Total Actives		
	2006	2005	% Change	2006	2005	% Change
0 - 149,999	1	8	-87.5	2	11	-81.8
150,000 - 199,999	0	0	0.0	2	1	100.0
200,000 - 299,999	19	12	58.3	58	11	427.3
300,000 - 399,999	139	167	-16.8	490	181	170.7
400,000 - 499,999	241	365	-34.0	808	491	64.6
500,000 - 599,999	136	287	-52.6	545	426	27.9
600,000 - 699,999	107	200	-46.5	499	326	53.1
700,000 - 799,999	71	181	-60.8	332	314	5.7
800,000 - 899,999	56	112	-50.0	262	232	12.9
900,000 - 999,999	29	58	-50.0	146	154	-5.2
1,000,000 - 1,249,999	28	40	-30.0	111	96	15.6
1,250,000 - 1,499,999	13	33	-60.6	82	78	5.1
1,500,000 +	20	13	53.8	99	63	57.1
TOTALS	860	1476	-41.7	3436	2384	44.1

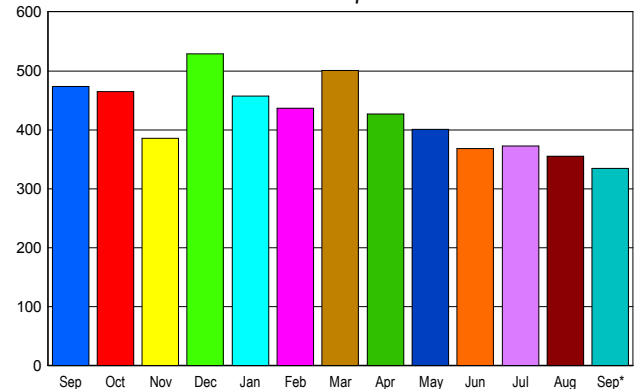
INVENTORY TREND

Listings Active at End of Month



SALES TREND

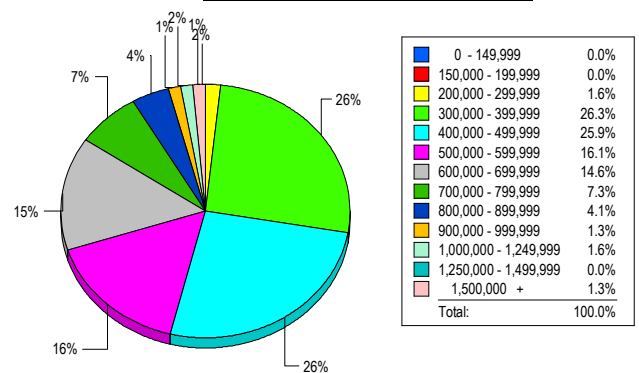
Contracts Ratified Per Month



CONTRACTS

Price Range	New This Month			Year-To-Date		
	2006	2005	% Change	2006	2005	% Change
0 - 149,999	0	0	0.0	3	5	-40.0
150,000 - 199,999	1	0	100.0	3	3	0.0
200,000 - 299,999	11	7	57.1	58	152	-61.8
300,000 - 399,999	105	89	18.0	704	963	-26.9
400,000 - 499,999	89	143	-37.8	1,023	1,780	-42.5
500,000 - 599,999	52	81	-35.8	613	952	-35.6
600,000 - 699,999	34	50	-32.0	503	732	-31.3
700,000 - 799,999	20	43	-53.5	310	494	-37.2
800,000 - 899,999	8	23	-65.2	179	243	-26.3
900,000 - 999,999	5	17	-70.6	90	130	-30.8
1,000,000 - 1,249,999	2	5	-60.0	60	88	-31.8
1,250,000 - 1,499,999	4	12	-66.7	33	68	-51.5
1,500,000 +	3	3	0.0	29	31	-6.5
TOTALS	334	473	-29.4	3608	5641	-36.0

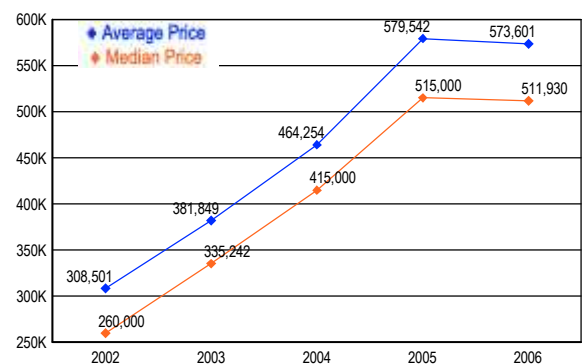
MARKET BY PRICE RANGE



SETTLEMENTS

Price Range	New This Month			Year-to-Date		
	2006	2005	% Change	2006	2005	% Change
0 - 149,999	0	0	0.0	3	6	-50.0
150,000 - 199,999	0	0	0.0	1	3	-66.7
200,000 - 299,999	5	7	-28.6	47	151	-68.9
300,000 - 399,999	83	74	12.2	649	882	-26.4
400,000 - 499,999	82	168	-51.2	1,011	1,852	-45.4
500,000 - 599,999	51	82	-37.8	659	1,006	-34.5
600,000 - 699,999	46	89	-48.3	532	756	-29.6
700,000 - 799,999	23	48	-52.1	326	515	-36.7
800,000 - 899,999	13	26	-50.0	203	254	-20.1
900,000 - 999,999	4	16	-75.0	80	110	-27.3
1,000,000 - 1,249,999	5	8	-37.5	85	107	-20.6
1,250,000 - 1,499,999	0	5	-100.0	29	54	-46.3
1,500,000 +	4	1	300.0	35	29	20.7
TOTALS	316	524	-39.7	3660	5725	-36.1

AVERAGE & MEDIAN PRICE



DATA SOURCE: Metropolitan Regional Information Systems, Inc. (MRIS)

NOTES: Properties not listed through this Multiple Listing Service are not reflected. The term "sales" represents ratified purchase contracts. Current year information is preliminary and subject to revision. Current year-to-date contract information may not equal the sum of the monthly contract totals reported in