

# ARLINGTON COUNTY HOUSING REPORT

## Residential Market Report

### Single Family Homes

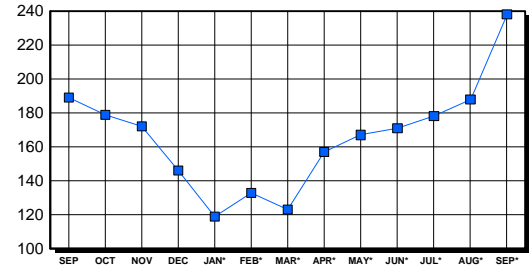
September 2002

#### LISTINGS

| Price Range         | New This Month |            |             | Total Active |            |             |
|---------------------|----------------|------------|-------------|--------------|------------|-------------|
|                     | 2002           | 2001       | % Change    | 2002         | 2001       | % Change    |
| 0-149999            | 0              | 0          | 0.0         | 2            | 2          | 100.0       |
| 150000-299999       | 26             | 58         | -55.2       | 22           | 34         | -35.3       |
| 300000-449999       | 77             | 81         | -4.9        | 65           | 58         | 12.1        |
| 450000-599999       | 67             | 33         | 103.0       | 71           | 40         | 77.5        |
| 600000-749999       | 29             | 8          | 262.5       | 32           | 27         | 18.5        |
| 750000-999999       | 23             | 8          | 187.5       | 31           | 18         | 72.2        |
| 1000000 & Over      | 6              | 2          | 200.0       | 15           | 10         | 50.0        |
| <b>Grand Total:</b> | <b>228</b>     | <b>190</b> | <b>20.0</b> | <b>238</b>   | <b>189</b> | <b>25.9</b> |

#### INVENTORY TREND

Listings Active At End Of Month

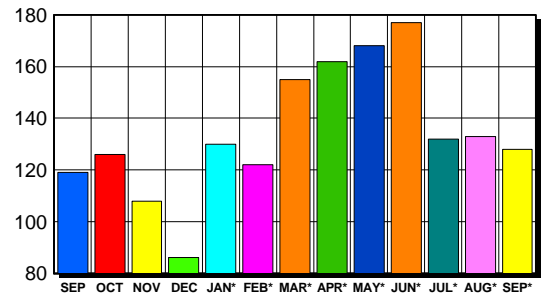


#### CONTRACTS

| Price Range         | New This Month |            |             | Year-To-Date |              |             |
|---------------------|----------------|------------|-------------|--------------|--------------|-------------|
|                     | 2002           | 2001       | % Change    | 2002         | 2001         | % Change    |
| 0-149999            | 0              | 1          | -100.0      | 8            | 35           | -77.1       |
| 150000-299999       | 26             | 37         | -29.7       | 254          | 313          | -18.8       |
| 300000-449999       | 46             | 55         | -16.4       | 546          | 526          | 3.8         |
| 450000-599999       | 28             | 13         | 115.4       | 304          | 175          | 73.7        |
| 600000-749999       | 16             | 7          | 128.6       | 116          | 86           | 34.9        |
| 750000-999999       | 8              | 1          | 700.0       | 61           | 28           | 117.9       |
| 1000000 & Over      | 4              | 0          | 400.0       | 18           | 14           | 28.6        |
| <b>Grand Total:</b> | <b>128</b>     | <b>114</b> | <b>12.3</b> | <b>1,307</b> | <b>1,177</b> | <b>11.0</b> |

#### SALES TREND

Contracts Ratified Per Month



#### SETTLEMENTS

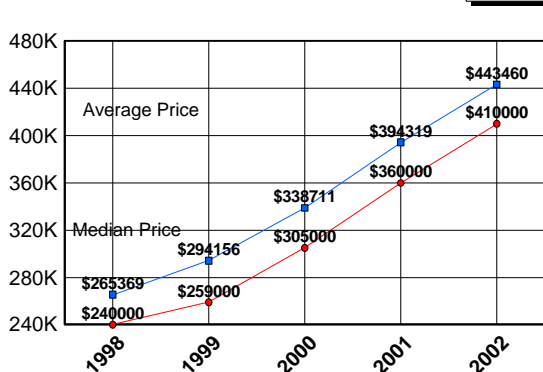
| Price Range         | New This Month |           |             | Year-To-Date |              |             |
|---------------------|----------------|-----------|-------------|--------------|--------------|-------------|
|                     | 2002           | 2001      | % Change    | 2002         | 2001         | % Change    |
| 0-149999            | 0              | 2         | -200.0      | 8            | 36           | -77.8       |
| 150000-299999       | 22             | 23        | -4.3        | 215          | 297          | -27.6       |
| 300000-449999       | 45             | 41        | 9.8         | 544          | 490          | 11.0        |
| 450000-599999       | 25             | 12        | 108.3       | 287          | 166          | 72.9        |
| 600000-749999       | 15             | 5         | 200.0       | 117          | 84           | 39.3        |
| 750000-999999       | 8              | 2         | 300.0       | 59           | 27           | 118.5       |
| 1000000 & Over      | 1              | 2         | -50.0       | 15           | 13           | 15.4        |
| <b>Grand Total:</b> | <b>116</b>     | <b>87</b> | <b>33.3</b> | <b>1,245</b> | <b>1,113</b> | <b>11.9</b> |

#### DATA SOURCE

Metropolitan Regional Information System (MRIS)

NOTES: Properties not listed through this Multiple Listing Service are not reflected. The term "sales" represents ratified purchase contracts. Current year information is preliminary and subject to revision. Current year- to- date contract information may not equal the sum of the monthly contract totals reported in previous issues. Prices are not adjusted for inflation.

#### AVERAGE & MEDIAN PRICE



#### MARKET BY PRICE RANGE

