

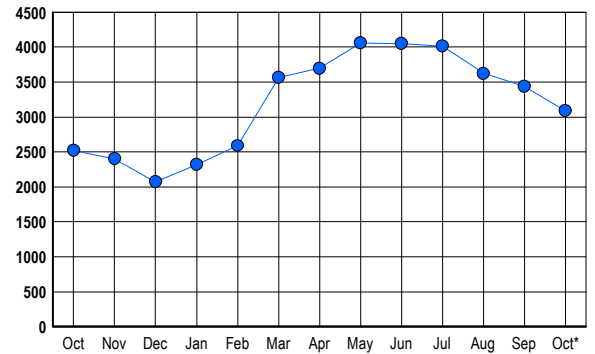


### LISTINGS

Prices Range	New This Month			Total Actives		
	2006	2005	% Change	2006	2005	% Change
0 - 149,999	2	4	-50.0	2	5	-60.0
150,000 - 199,999	0	0	0.0	2	1	100.0
200,000 - 299,999	17	7	142.9	67	13	415.4
300,000 - 399,999	140	126	11.1	469	218	115.1
400,000 - 499,999	191	281	-32.0	696	534	30.3
500,000 - 599,999	119	207	-42.5	493	427	15.5
600,000 - 699,999	104	177	-41.2	444	368	20.7
700,000 - 799,999	59	143	-58.7	277	334	-17.1
800,000 - 899,999	50	80	-37.5	232	221	5.0
900,000 - 999,999	23	50	-54.0	126	148	-14.9
1,000,000 - 1,249,999	30	35	-14.3	110	119	-7.6
1,250,000 - 1,499,999	19	18	5.6	84	72	16.7
1,500,000 +	14	12	16.7	88	64	37.5
<b>TOTALS</b>	<b>768</b>	<b>1140</b>	<b>-32.6</b>	<b>3090</b>	<b>2524</b>	<b>22.4</b>

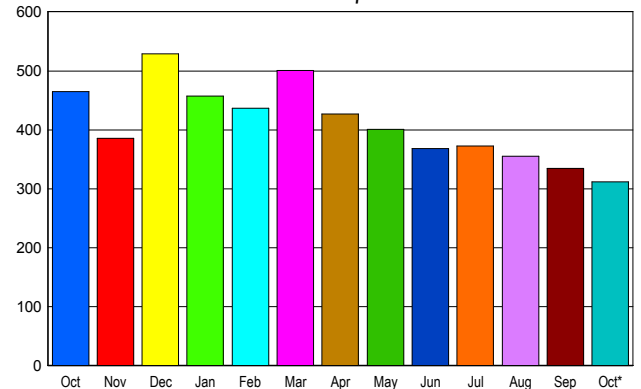
### INVENTORY TREND

Listings Active at End of Month



### SALES TREND

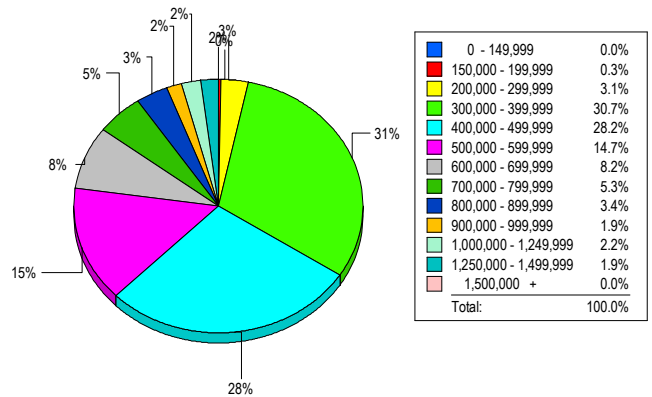
Contracts Ratified Per Month



### CONTRACTS

Price Range	New This Month			Year-To-Date		
	2006	2005	% Change	2006	2005	% Change
0 - 149,999	0	0	0.0	4	5	-20.0
150,000 - 199,999	1	0	100.0	3	3	0.0
200,000 - 299,999	11	10	10.0	69	163	-57.7
300,000 - 399,999	84	82	2.4	792	1,039	-23.8
400,000 - 499,999	93	135	-31.1	1,120	1,905	-41.2
500,000 - 599,999	35	84	-58.3	648	1,034	-37.3
600,000 - 699,999	30	55	-45.5	530	792	-33.1
700,000 - 799,999	22	43	-48.8	331	535	-38.1
800,000 - 899,999	16	17	-5.9	198	261	-24.1
900,000 - 999,999	3	18	-83.3	91	147	-38.1
1,000,000 - 1,249,999	9	7	28.6	70	96	-27.1
1,250,000 - 1,499,999	7	9	-22.2	41	79	-48.1
1,500,000 +	1	5	-80.0	32	34	-5.9
<b>TOTALS</b>	<b>312</b>	<b>465</b>	<b>-32.9</b>	<b>3929</b>	<b>6093</b>	<b>-35.5</b>

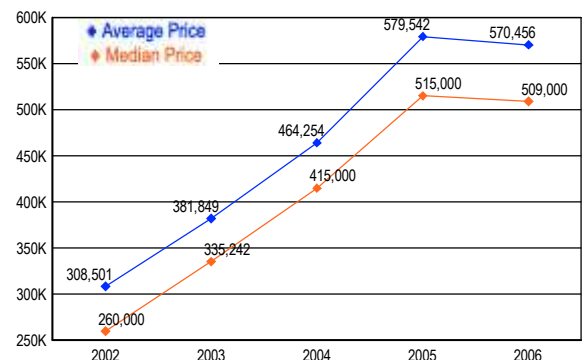
### MARKET BY PRICE RANGE



### SETTLEMENTS

Price Range	New This Month			Year-to-Date		
	2006	2005	% Change	2006	2005	% Change
0 - 149,999	0	0	0.0	4	6	-33.3
150,000 - 199,999	1	0	100.0	2	3	-33.3
200,000 - 299,999	10	6	66.7	58	157	-63.1
300,000 - 399,999	98	64	53.1	752	950	-20.8
400,000 - 499,999	90	140	-35.7	1,103	2,005	-45.0
500,000 - 599,999	47	76	-38.2	712	1,092	-34.8
600,000 - 699,999	26	45	-42.2	560	807	-30.6
700,000 - 799,999	17	48	-64.6	345	571	-39.6
800,000 - 899,999	11	15	-26.7	216	272	-20.6
900,000 - 999,999	6	27	-77.8	87	139	-37.4
1,000,000 - 1,249,999	7	8	-12.5	94	119	-21.0
1,250,000 - 1,499,999	6	8	-25.0	35	63	-44.4
1,500,000 +	0	0	0.0	38	29	31.0
<b>TOTALS</b>	<b>319</b>	<b>437</b>	<b>-27.0</b>	<b>4006</b>	<b>6213</b>	<b>-35.5</b>

### AVERAGE & MEDIAN PRICE



DATA SOURCE: Metropolitan Regional Information Systems, Inc. (MRIS)

NOTES: Properties not listed through this Multiple Listing Service are not reflected. The term "sales" represents ratified purchase contracts. Current year information is preliminary and subject to revision. Current year-to-date contract information may not equal the sum of the monthly contract totals reported in