

FAUQUIER COUNTY Residential Market Report



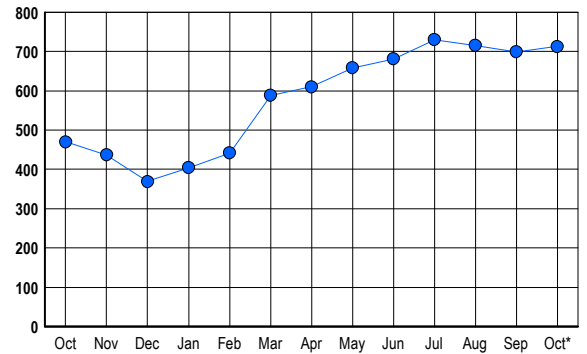
HOUSING REPORT Single Family Homes October 2006

LISTINGS

Prices Range	New This Month			Total Actives		
	2006	2005	% Change	2006	2005	% Change
0 - 149,999	1	2	-50.0	1	0	100.0
150,000 - 199,999	1	1	0.0	3	2	50.0
200,000 - 299,999	18	17	5.9	52	30	73.3
300,000 - 399,999	42	48	-12.5	165	91	81.3
400,000 - 499,999	38	51	-25.5	133	95	40.0
500,000 - 599,999	23	27	-14.8	126	79	59.5
600,000 - 699,999	19	23	-17.4	92	50	84.0
700,000 - 799,999	7	9	-22.2	33	36	-8.3
800,000 - 899,999	2	8	-75.0	23	20	15.0
900,000 - 999,999	4	2	100.0	17	12	41.7
1,000,000 - 1,249,999	5	2	150.0	19	7	171.4
1,250,000 - 1,499,999	2	1	100.0	8	11	-27.3
1,500,000 +	6	4	50.0	41	37	10.8
TOTALS	168	195	-13.8	713	470	51.7

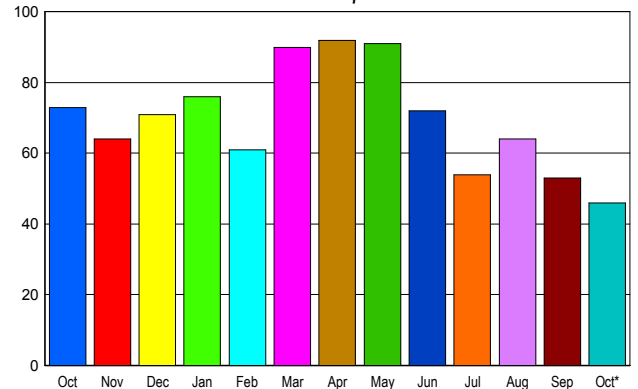
INVENTORY TREND

Listings Active at End of Month



SALES TREND

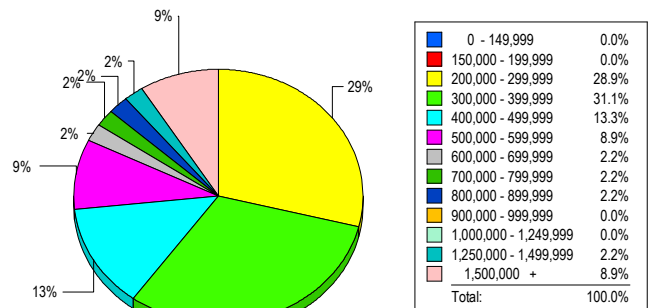
Contracts Ratified Per Month



CONTRACTS

Price Range	New This Month			Year-To-Date		
	2006	2005	% Change	2006	2005	% Change
0 - 149,999	1	1	0.0	1	3	-66.7
150,000 - 199,999	1	0	100.0	4	15	-73.3
200,000 - 299,999	10	11	-9.1	112	168	-33.3
300,000 - 399,999	15	16	-6.3	186	272	-31.6
400,000 - 499,999	6	22	-72.7	135	248	-45.6
500,000 - 599,999	3	12	-75.0	74	120	-38.3
600,000 - 699,999	2	7	-71.4	51	57	-10.5
700,000 - 799,999	1	0	100.0	28	36	-22.2
800,000 - 899,999	1	0	100.0	10	24	-58.3
900,000 - 999,999	2	1	100.0	8	17	-52.9
1,000,000 - 1,249,999	1	1	0.0	6	8	-25.0
1,250,000 - 1,499,999	1	1	0.0	6	6	0.0
1,500,000 +	2	1	100.0	26	26	0.0
TOTALS	46	73	-37.0	647	1000	-35.3

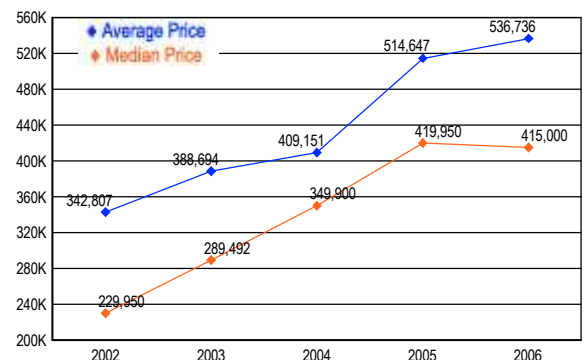
MARKET BY PRICE RANGE



SETTLEMENTS

Price Range	New This Month			Year-to-Date		
	2006	2005	% Change	2006	2005	% Change
0 - 149,999	0	0	0.0	0	2	-100.0
150,000 - 199,999	0	3	-100.0	3	21	-85.7
200,000 - 299,999	13	5	160.0	110	163	-32.5
300,000 - 399,999	14	18	-22.2	194	279	-30.5
400,000 - 499,999	6	16	-62.5	143	236	-39.4
500,000 - 599,999	4	10	-60.0	77	126	-38.9
600,000 - 699,999	1	5	-80.0	57	54	5.6
700,000 - 799,999	1	2	-50.0	23	35	-34.3
800,000 - 899,999	1	2	-50.0	12	27	-55.6
900,000 - 999,999	0	1	-100.0	5	13	-61.5
1,000,000 - 1,249,999	0	0	0.0	10	9	11.1
1,250,000 - 1,499,999	1	1	0.0	3	5	-40.0
1,500,000 +	4	0	400.0	25	24	4.2
TOTALS	45	63	-28.6	662	994	-33.4

AVERAGE & MEDIAN PRICE



DATA SOURCE: Metropolitan Regional Information Systems, Inc. (MRIS)

NOTES: Properties not listed through this Multiple Listing Service are not reflected. The term "sales" represents ratified purchase contracts. Current year information is preliminary and subject to revision. Current year-to-date contract information may not equal the sum of the monthly contract totals reported in