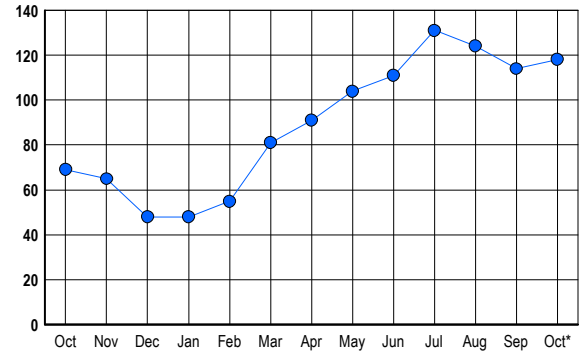


LISTINGS

Prices Range	New This Month			Total Actives		
	2006	2005	% Change	2006	2005	% Change
0 - 149,999	0	0	0.0	0	0	0.0
150,000 - 199,999	0	0	0.0	0	0	0.0
200,000 - 299,999	0	0	0.0	0	0	0.0
300,000 - 399,999	4	1	300.0	10	2	400.0
400,000 - 499,999	8	13	-38.5	29	14	107.1
500,000 - 599,999	18	12	50.0	40	18	122.2
600,000 - 699,999	6	7	-14.3	17	17	0.0
700,000 - 799,999	0	6	-100.0	2	7	-71.4
800,000 - 899,999	0	2	-100.0	0	7	-100.0
900,000 - 999,999	3	0	300.0	2	1	100.0
1,000,000 - 1,249,999	2	0	200.0	11	1	1,000.0
1,250,000 - 1,499,999	5	1	400.0	6	2	200.0
1,500,000 +	1	0	100.0	1	0	100.0
TOTALS	47	42	11.9	118	69	71.0

INVENTORY TREND

Listings Active at End of Month

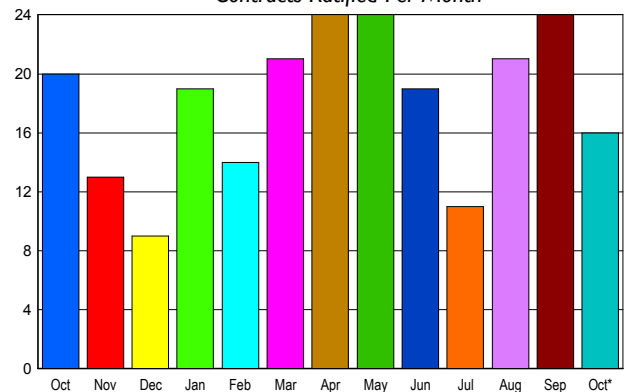


CONTRACTS

Price Range	New This Month			Year-To-Date		
	2006	2005	% Change	2006	2005	% Change
0 - 149,999	0	0	0.0	0	0	0.0
150,000 - 199,999	0	0	0.0	0	0	0.0
200,000 - 299,999	0	0	0.0	1	5	-80.0
300,000 - 399,999	2	1	100.0	18	29	-37.9
400,000 - 499,999	8	9	-11.1	62	84	-26.2
500,000 - 599,999	5	1	400.0	49	59	-16.9
600,000 - 699,999	0	3	-100.0	33	43	-23.3
700,000 - 799,999	1	2	-50.0	8	11	-27.3
800,000 - 899,999	0	1	-100.0	4	7	-42.9
900,000 - 999,999	0	1	-100.0	4	8	-50.0
1,000,000 - 1,249,999	0	1	-100.0	6	5	20.0
1,250,000 - 1,499,999	0	1	-100.0	3	2	50.0
1,500,000 +	0	0	0.0	0	0	0.0
TOTALS	16	20	-20.0	188	253	-25.7

SALES TREND

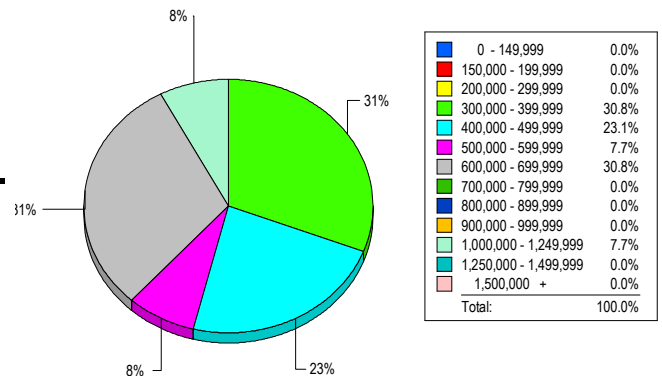
Contracts Ratified Per Month



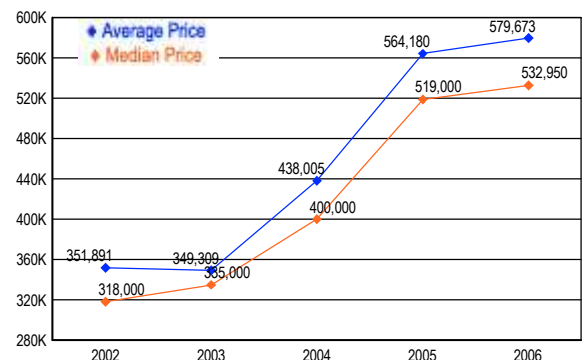
SETTLEMENTS

Price Range	New This Month			Year-to-Date		
	2006	2005	% Change	2006	2005	% Change
0 - 149,999	0	0	0.0	0	0	0.0
150,000 - 199,999	0	0	0.0	0	0	0.0
200,000 - 299,999	0	0	0.0	1	4	-75.0
300,000 - 399,999	4	2	100.0	16	27	-40.7
400,000 - 499,999	3	1	200.0	53	78	-32.1
500,000 - 599,999	1	5	-80.0	47	70	-32.9
600,000 - 699,999	4	1	300.0	31	40	-22.5
700,000 - 799,999	0	2	-100.0	5	13	-61.5
800,000 - 899,999	0	0	0.0	7	5	40.0
900,000 - 999,999	0	1	-100.0	4	6	-33.3
1,000,000 - 1,249,999	1	0	100.0	5	5	0.0
1,250,000 - 1,499,999	0	0	0.0	2	1	100.0
1,500,000 +	0	0	0.0	1	0	100.0
TOTALS	13	12	8.3	172	249	-30.9

MARKET BY PRICE RANGE



AVERAGE & MEDIAN PRICE



DATA SOURCE: Metropolitan Regional Information Systems, Inc. (MRIS)

NOTES: Properties not listed through this Multiple Listing Service are not reflected. The term "sales" represents ratified purchase contracts. Current year information is preliminary and subject to revision. Current year-to-date contract information may not equal the sum of the monthly contract totals reported in