

ALEXANDRIA CITY

Residential Market Report



HOUSING REPORT

CONDO & COOPS

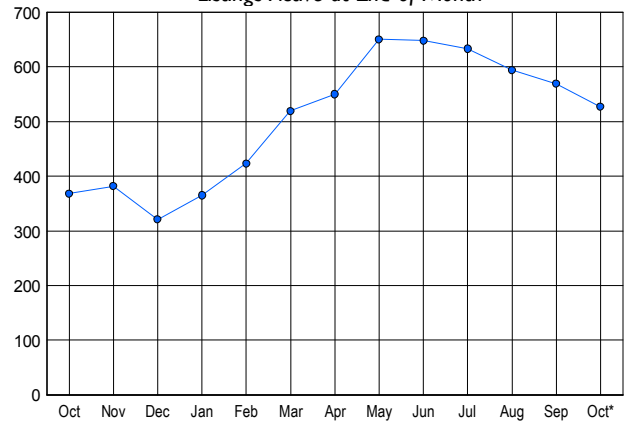
October 2006

LISTINGS

Price Range	New This Month			Total Actives		
	2006	2005	% Change	2006	2005	% Change
0 - 149,999	0	1	-100.0	0	4	-100.0
150,000 - 199,999	4	2	100.0	18	5	260.0
200,000 - 299,999	67	71	-5.6	184	109	68.8
300,000 - 399,999	55	85	-35.3	186	131	42.0
400,000 - 499,999	22	33	-33.3	61	53	15.1
500,000 - 599,999	3	14	-78.6	33	30	10.0
600,000 - 699,999	5	7	-28.6	17	9	88.9
700,000 - 799,999	2	1	100.0	11	5	120.0
800,000 - 899,999	1	2	-50.0	7	6	16.7
900,000 - 999,999	0	3	-100.0	3	10	-70.0
1,000,000 - 1,249,999	2	1	100.0	1	3	-66.7
1,250,000 - 1,499,999	0	0	0.0	1	1	0.0
1,500,000 +	0	0	0.0	5	2	150.0
TOTALS	161	220	-26.8	527	368	43.2

INVENTORY TREND

Listings Active at End of Month

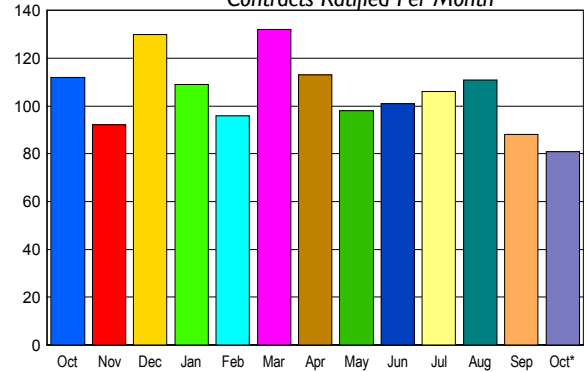


CONTRACTS

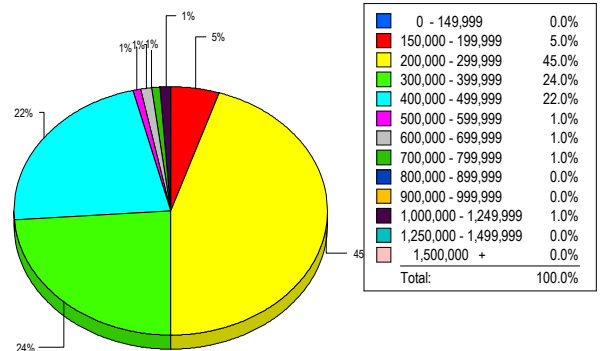
Price Range	New This Month			Year-To-Date		
	2006	2005	% Change	2006	2005	% Change
0 - 149,999	0	0	0.0	1	10	-90.0
150,000 - 199,999	3	3	0.0	42	93	-54.8
200,000 - 299,999	43	42	2.4	430	590	-27.1
300,000 - 399,999	21	36	-41.7	325	446	-27.1
400,000 - 499,999	9	14	-35.7	140	154	-9.1
500,000 - 599,999	1	8	-87.5	54	79	-31.6
600,000 - 699,999	2	5	-60.0	20	25	-20.0
700,000 - 799,999	0	3	-100.0	15	11	36.4
800,000 - 899,999	0	0	0.0	10	7	42.9
900,000 - 999,999	1	0	100.0	5	5	0.0
1,000,000 - 1,249,999	1	1	0.0	5	4	25.0
1,250,000 - 1,499,999	0	0	0.0	1	1	0.0
1,500,000 +	0	0	0.0	1	3	-66.7
TOTALS	81	112	-27.7	1049	1428	-26.5

SALES TREND

Contracts Ratified Per Month



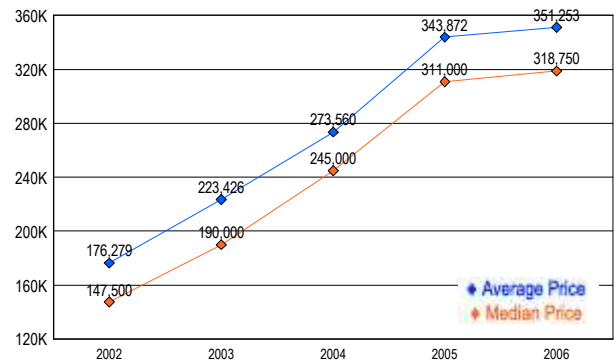
MARKET BY PRICE RANGE



SETTLEMENTS

Price Range	New This Month			Year-To-Date		
	2006	2005	% Change	2006	2005	% Change
0 - 149,999	0	0	0.0	0	11	-100.0
150,000 - 199,999	5	3	66.7	36	74	-51.4
200,000 - 299,999	45	33	36.4	427	566	-24.6
300,000 - 399,999	24	30	-20.0	330	451	-26.8
400,000 - 499,999	22	10	120.0	146	168	-13.1
500,000 - 599,999	1	5	-80.0	56	85	-34.1
600,000 - 699,999	1	0	100.0	19	19	0.0
700,000 - 799,999	1	2	-50.0	18	8	125.0
800,000 - 899,999	0	3	-100.0	10	7	42.9
900,000 - 999,999	0	2	-100.0	5	4	25.0
1,000,000 - 1,249,999	1	1	0.0	6	5	20.0
1,250,000 - 1,499,999	0	0	0.0	0	1	-100.0
1,500,000 +	0	0	0.0	1	3	-66.7
TOTALS	100	89	12.4	1054	1402	-24.8

AVERAGE & MEDIAN PRICE



DATA SOURCE: Metropolitan Regional Information Systems, Inc. (MRIS)

NOTES: Properties not listed through this Multiple Listing Service are not reflected. The term "sales" represents ratified purchase contracts. Current year information is preliminary and subject to revision. Current year- to- date contract information may not equal the sum of the monthly contract totals reported in