

# ARLINGTON COUNTY HOUSING REPORT

## Residential Market Report

### Single Family Homes

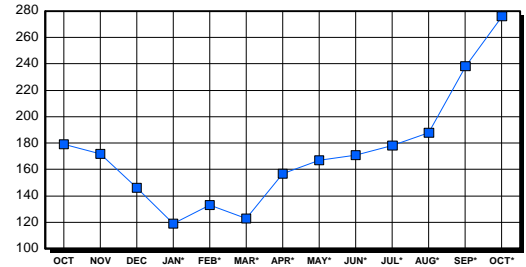
October 2002

#### LISTINGS

Price Range	New This Month			Total Active		
	2002	2001	% Change	2002	2001	% Change
0-149999	1	1	0.0	1	2	-50.0
150000-299999	21	40	-47.5	28	24	16.7
300000-449999	97	55	76.4	87	56	55.4
450000-599999	61	35	74.3	73	41	78.0
600000-749999	18	19	-5.3	36	21	71.4
750000-999999	25	9	177.8	35	27	29.6
1000000 & Over	7	2	250.0	16	8	100.0
<b>Grand Total:</b>	<b>230</b>	<b>161</b>	<b>42.9</b>	<b>276</b>	<b>179</b>	<b>54.2</b>

#### INVENTORY TREND

Listings Active At End Of Month

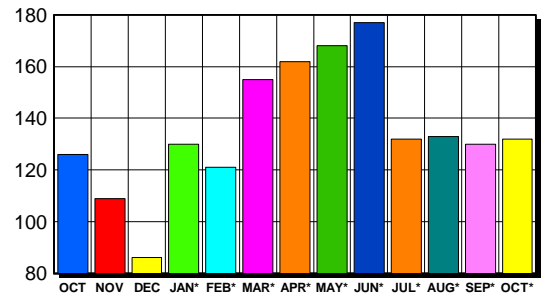


#### CONTRACTS

Price Range	New This Month			Year-To-Date		
	2002	2001	% Change	2002	2001	% Change
0-149999	1	2	-50.0	9	37	-75.7
150000-299999	16	43	-62.8	269	359	-25.1
300000-449999	51	50	2.0	602	577	4.3
450000-599999	37	20	85.0	340	198	71.7
600000-749999	13	6	116.7	129	91	41.8
750000-999999	12	3	300.0	72	32	125.0
1000000 & Over	2	1	100.0	19	15	26.7
<b>Grand Total:</b>	<b>132</b>	<b>125</b>	<b>5.6</b>	<b>1,440</b>	<b>1,309</b>	<b>10.0</b>

#### SALES TREND

Contracts Ratified Per Month



#### SETTLEMENTS

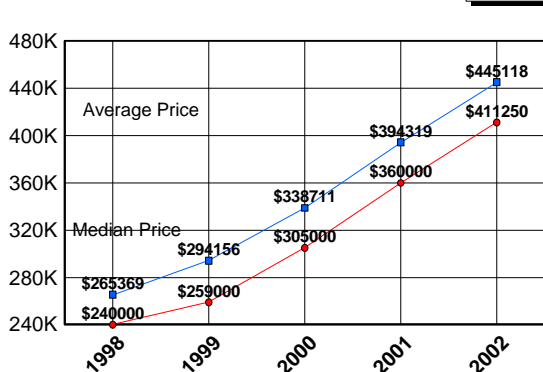
Price Range	New This Month			Year-To-Date		
	2002	2001	% Change	2002	2001	% Change
0-149999	0	4	-400.0	8	40	-80.0
150000-299999	22	37	-40.5	241	341	-29.3
300000-449999	48	56	-14.3	598	554	7.9
450000-599999	26	23	13.0	318	190	67.4
600000-749999	17	5	240.0	134	91	47.3
750000-999999	9	1	800.0	68	29	134.5
1000000 & Over	1	2	-50.0	17	15	13.3
<b>Grand Total:</b>	<b>123</b>	<b>128</b>	<b>-3.9</b>	<b>1,384</b>	<b>1,260</b>	<b>9.8</b>

#### DATA SOURCE

Metropolitan Regional Information System (MRIS)

NOTES: Properties not listed through this Multiple Listing Service are not reflected. The term "sales" represents ratified purchase contracts. Current year information is preliminary and subject to revision. Current year- to- date contract information may not equal the sum of the monthly contract totals reported in previous issues. Prices are not adjusted for inflation.

#### AVERAGE & MEDIAN PRICE



#### MARKET BY PRICE RANGE

