

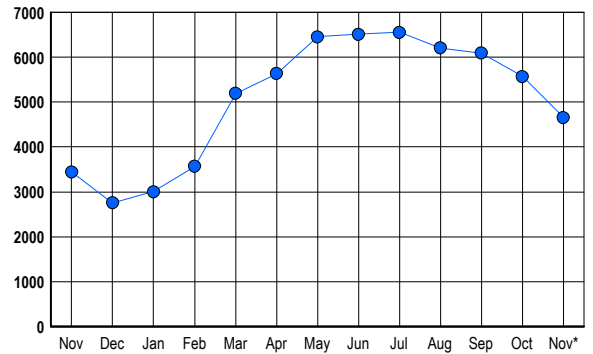


LISTINGS

| Prices Range | New This Month | | | Total Actives | | |
|-----------------------|----------------|-------------|--------------|---------------|-------------|-------------|
| | 2006 | 2005 | % Change | 2006 | 2005 | % Change |
| 0 - 149,999 | 1 | 6 | -83.3 | 2 | 25 | -92.0 |
| 150,000 - 199,999 | 1 | 0 | 100.0 | 3 | 0 | 300.0 |
| 200,000 - 299,999 | 17 | 16 | 6.3 | 47 | 14 | 235.7 |
| 300,000 - 399,999 | 200 | 201 | -0.5 | 589 | 298 | 97.7 |
| 400,000 - 499,999 | 289 | 403 | -28.3 | 987 | 737 | 33.9 |
| 500,000 - 599,999 | 252 | 326 | -22.7 | 949 | 650 | 46.0 |
| 600,000 - 699,999 | 122 | 226 | -46.0 | 571 | 517 | 10.4 |
| 700,000 - 799,999 | 85 | 136 | -37.5 | 352 | 330 | 6.7 |
| 800,000 - 899,999 | 44 | 94 | -53.2 | 233 | 196 | 18.9 |
| 900,000 - 999,999 | 39 | 51 | -23.5 | 169 | 141 | 19.9 |
| 1,000,000 - 1,249,999 | 30 | 60 | -50.0 | 197 | 149 | 32.2 |
| 1,250,000 - 1,499,999 | 31 | 44 | -29.5 | 196 | 140 | 40.0 |
| 1,500,000 + | 54 | 42 | 28.6 | 360 | 247 | 45.7 |
| TOTALS | 1165 | 1605 | -27.4 | 4655 | 3444 | 35.2 |

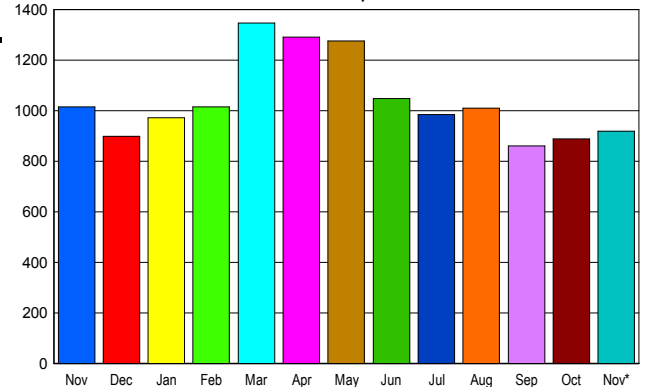
INVENTORY TREND

Listings Active at End of Month



SALES TREND

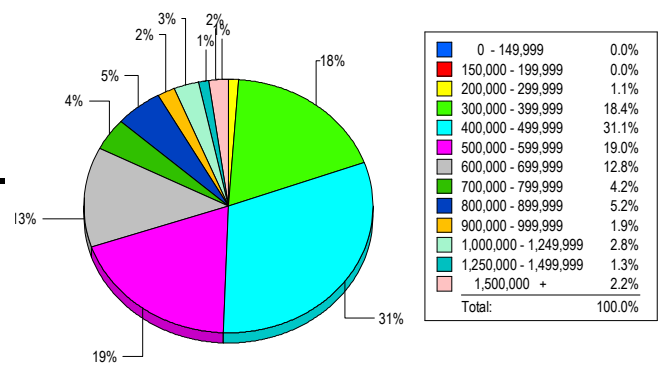
Contracts Ratified Per Month



CONTRACTS

| Price Range | New This Month | | | Year-To-Date | | |
|-----------------------|----------------|-------------|-------------|--------------|--------------|--------------|
| | 2006 | 2005 | % Change | 2006 | 2005 | % Change |
| 0 - 149,999 | 0 | 0 | 0.0 | 0 | 4 | -100.0 |
| 150,000 - 199,999 | 1 | 0 | 100.0 | 3 | 10 | -70.0 |
| 200,000 - 299,999 | 20 | 11 | 81.8 | 113 | 273 | -58.6 |
| 300,000 - 399,999 | 180 | 183 | -1.6 | 1,831 | 2,802 | -34.7 |
| 400,000 - 499,999 | 282 | 301 | -6.3 | 3,028 | 4,221 | -28.3 |
| 500,000 - 599,999 | 163 | 190 | -14.2 | 2,381 | 3,311 | -28.1 |
| 600,000 - 699,999 | 96 | 120 | -20.0 | 1,562 | 2,168 | -28.0 |
| 700,000 - 799,999 | 61 | 63 | -3.2 | 815 | 1,192 | -31.6 |
| 800,000 - 899,999 | 39 | 48 | -18.8 | 531 | 750 | -29.2 |
| 900,000 - 999,999 | 26 | 22 | 18.2 | 301 | 446 | -32.5 |
| 1,000,000 - 1,249,999 | 17 | 37 | -54.1 | 308 | 384 | -19.8 |
| 1,250,000 - 1,499,999 | 16 | 19 | -15.8 | 237 | 311 | -23.8 |
| 1,500,000 + | 19 | 22 | -13.6 | 265 | 294 | -9.9 |
| TOTALS | 920 | 1016 | -9.4 | 11375 | 16166 | -29.6 |

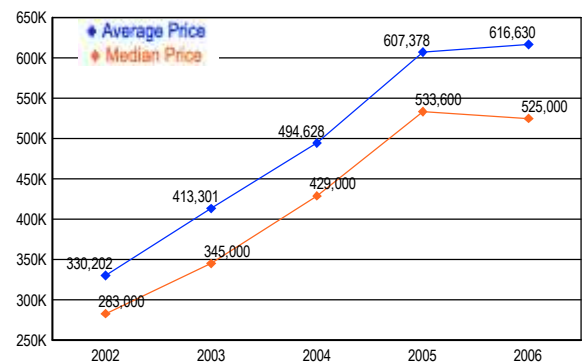
MARKET BY PRICE RANGE



SETTLEMENTS

| Price Range | New This Month | | | Year-to-Date | | |
|-----------------------|----------------|-------------|--------------|--------------|--------------|--------------|
| | 2006 | 2005 | % Change | 2006 | 2005 | % Change |
| 0 - 149,999 | 0 | 0 | 0.0 | 0 | 6 | -100.0 |
| 150,000 - 199,999 | 0 | 0 | 0.0 | 3 | 7 | -57.1 |
| 200,000 - 299,999 | 9 | 6 | 50.0 | 103 | 232 | -55.6 |
| 300,000 - 399,999 | 145 | 168 | -13.7 | 1,713 | 2,437 | -29.7 |
| 400,000 - 499,999 | 245 | 279 | -12.2 | 2,973 | 4,157 | -28.5 |
| 500,000 - 599,999 | 150 | 261 | -42.5 | 2,385 | 3,445 | -30.8 |
| 600,000 - 699,999 | 101 | 142 | -28.9 | 1,545 | 2,308 | -33.1 |
| 700,000 - 799,999 | 33 | 80 | -58.8 | 801 | 1,274 | -37.1 |
| 800,000 - 899,999 | 41 | 44 | -6.8 | 521 | 753 | -30.8 |
| 900,000 - 999,999 | 15 | 24 | -37.5 | 283 | 446 | -36.5 |
| 1,000,000 - 1,249,999 | 22 | 42 | -47.6 | 344 | 426 | -19.2 |
| 1,250,000 - 1,499,999 | 10 | 22 | -54.5 | 190 | 285 | -33.3 |
| 1,500,000 + | 17 | 16 | 6.3 | 239 | 290 | -17.6 |
| TOTALS | 788 | 1084 | -27.3 | 11100 | 16066 | -30.9 |

AVERAGE & MEDIAN PRICE



DATA SOURCE: Metropolitan Regional Information Systems, Inc. (MRIS)

NOTES: Properties not listed through this Multiple Listing Service are not reflected. The term "sales" represents ratified purchase contracts. Current year information is preliminary and subject to revision. Current year-to-date contract information may not equal the sum of the monthly contract totals reported in