

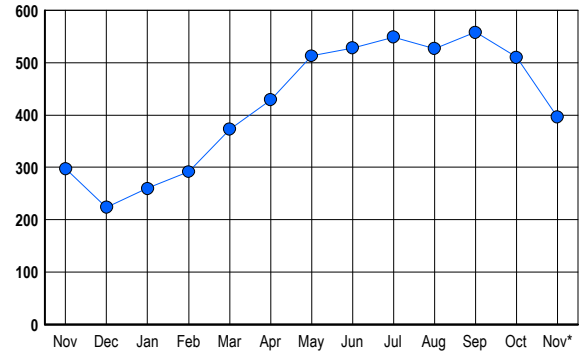


LISTINGS

Prices Range	New This Month			Total Actives		
	2006	2005	% Change	2006	2005	% Change
0 - 149,999	0	0	0.0	0	2	-100.0
150,000 - 199,999	0	0	0.0	0	0	0.0
200,000 - 299,999	1	1	0.0	2	1	100.0
300,000 - 399,999	6	9	-33.3	15	10	50.0
400,000 - 499,999	10	12	-16.7	26	22	18.2
500,000 - 599,999	25	25	0.0	68	47	44.7
600,000 - 699,999	21	42	-50.0	62	66	-6.1
700,000 - 799,999	20	27	-25.9	59	34	73.5
800,000 - 899,999	7	10	-30.0	31	15	106.7
900,000 - 999,999	8	14	-42.9	16	15	6.7
1,000,000 - 1,249,999	15	11	36.4	38	23	65.2
1,250,000 - 1,499,999	5	5	0.0	29	32	-9.4
1,500,000 +	7	6	16.7	50	31	61.3
TOTALS	125	162	-22.8	396	298	32.9

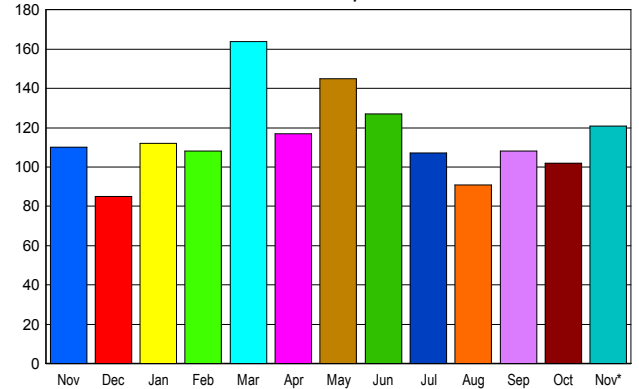
INVENTORY TREND

Listings Active at End of Month



SALES TREND

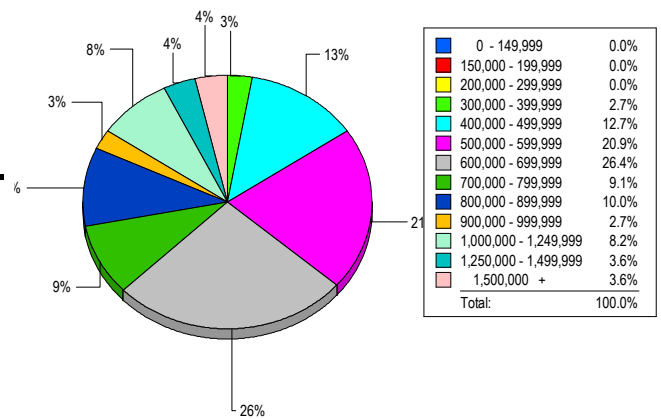
Contracts Ratified Per Month



CONTRACTS

Price Range	New This Month			Year-To-Date		
	2006	2005	% Change	2006	2005	% Change
0 - 149,999	0	0	0.0	0	0	0.0
150,000 - 199,999	0	0	0.0	0	0	0.0
200,000 - 299,999	1	1	0.0	8	9	-11.1
300,000 - 399,999	7	5	40.0	62	77	-19.5
400,000 - 499,999	15	11	36.4	143	191	-25.1
500,000 - 599,999	29	14	107.1	269	306	-12.1
600,000 - 699,999	23	28	-17.9	265	353	-24.9
700,000 - 799,999	16	14	14.3	167	198	-15.7
800,000 - 899,999	7	13	-46.2	125	122	2.5
900,000 - 999,999	8	12	-33.3	89	97	-8.2
1,000,000 - 1,249,999	7	4	75.0	79	69	14.5
1,250,000 - 1,499,999	5	7	-28.6	47	69	-31.9
1,500,000 +	3	1	200.0	46	45	2.2
TOTALS	121	110	10.0	1300	1536	-15.4

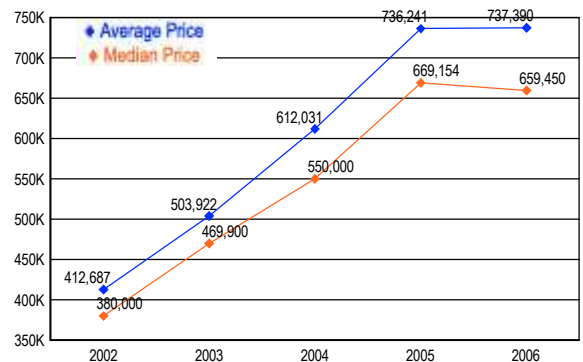
MARKET BY PRICE RANGE



SETTLEMENTS

Price Range	New This Month			Year-to-Date		
	2006	2005	% Change	2006	2005	% Change
0 - 149,999	0	0	0.0	0	0	0.0
150,000 - 199,999	0	0	0.0	0	0	0.0
200,000 - 299,999	0	1	-100.0	7	5	40.0
300,000 - 399,999	3	2	50.0	56	47	19.1
400,000 - 499,999	14	12	16.7	147	184	-20.1
500,000 - 599,999	23	23	0.0	249	284	-12.3
600,000 - 699,999	29	27	7.4	257	345	-25.5
700,000 - 799,999	10	16	-37.5	161	224	-28.1
800,000 - 899,999	11	18	-38.9	132	139	-5.0
900,000 - 999,999	3	7	-57.1	85	97	-12.4
1,000,000 - 1,249,999	9	7	28.6	84	97	-13.4
1,250,000 - 1,499,999	4	6	-33.3	45	53	-15.1
1,500,000 +	4	6	-33.3	39	47	-17.0
TOTALS	110	125	-12.0	1262	1522	-17.1

AVERAGE & MEDIAN PRICE



DATA SOURCE: Metropolitan Regional Information Systems, Inc. (MRIS)

NOTES: Properties not listed through this Multiple Listing Service are not reflected. The term "sales" represents ratified purchase contracts. Current year information is preliminary and subject to revision. Current year- to- date contract information may not equal the sum of the monthly contract totals reported in