

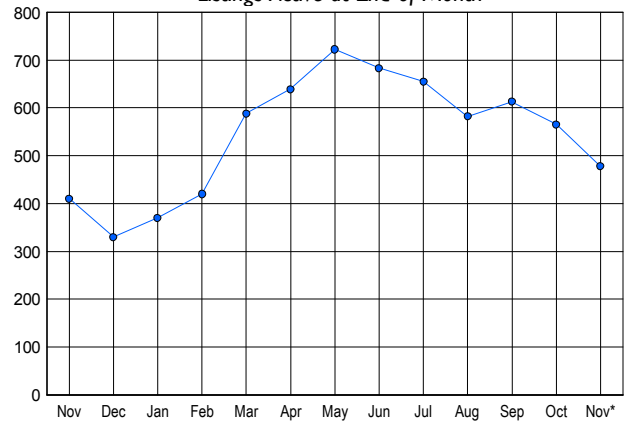


### LISTINGS

Price Range	New This Month			Total Actives		
	2006	2005	% Change	2006	2005	% Change
0 - 149,999	0	1	-100.0	1	7	-85.7
150,000 - 199,999	6	10	-40.0	26	17	52.9
200,000 - 299,999	25	50	-50.0	100	84	19.0
300,000 - 399,999	45	45	0.0	137	128	7.0
400,000 - 499,999	29	41	-29.3	86	84	2.4
500,000 - 599,999	19	20	-5.0	46	45	2.2
600,000 - 699,999	8	11	-27.3	25	26	-3.8
700,000 - 799,999	3	1	200.0	11	5	120.0
800,000 - 899,999	6	0	600.0	12	7	71.4
900,000 - 999,999	1	0	100.0	8	2	300.0
1,000,000 - 1,249,999	4	0	400.0	10	1	900.0
1,250,000 - 1,499,999	1	0	100.0	8	3	166.7
1,500,000 +	1	0	100.0	8	1	700.0
<b>TOTALS</b>	<b>148</b>	<b>179</b>	<b>-17.3</b>	<b>478</b>	<b>410</b>	<b>16.6</b>

### INVENTORY TREND

Listings Active at End of Month

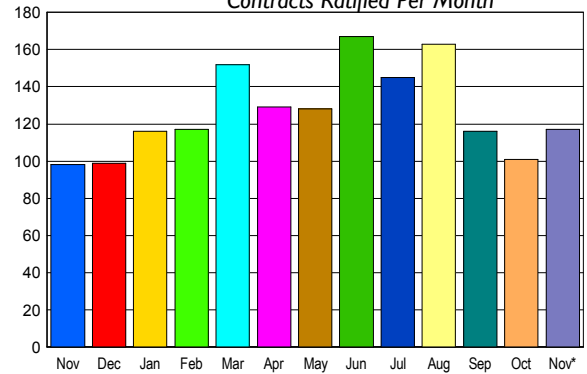


### CONTRACTS

Price Range	New This Month			Year-To-Date		
	2006	2005	% Change	2006	2005	% Change
0 - 149,999	0	1	-100.0	10	50	-80.0
150,000 - 199,999	3	7	-57.1	67	93	-28.0
200,000 - 299,999	23	27	-14.8	309	355	-13.0
300,000 - 399,999	44	26	69.2	522	463	12.7
400,000 - 499,999	23	14	64.3	317	390	-18.7
500,000 - 599,999	12	11	9.1	137	148	-7.4
600,000 - 699,999	6	5	20.0	67	60	11.7
700,000 - 799,999	1	5	-80.0	10	24	-58.3
800,000 - 899,999	2	1	100.0	6	6	0.0
900,000 - 999,999	2	0	200.0	8	3	166.7
1,000,000 - 1,249,999	1	0	100.0	6	2	200.0
1,250,000 - 1,499,999	0	1	-100.0	4	2	100.0
1,500,000 +	0	0	0.0	0	2	-100.0
<b>TOTALS</b>	<b>117</b>	<b>98</b>	<b>19.4</b>	<b>1463</b>	<b>1598</b>	<b>-8.4</b>

### SALES TREND

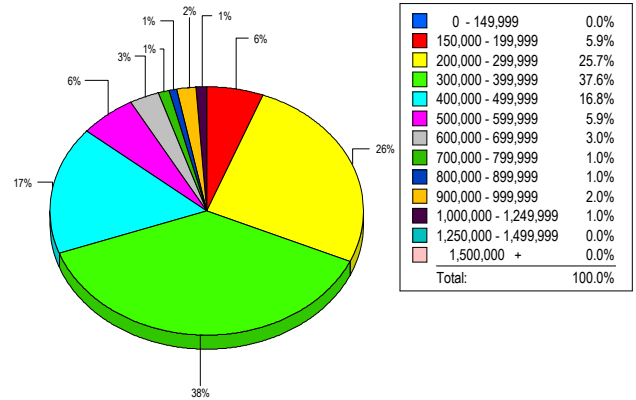
Contracts Ratified Per Month



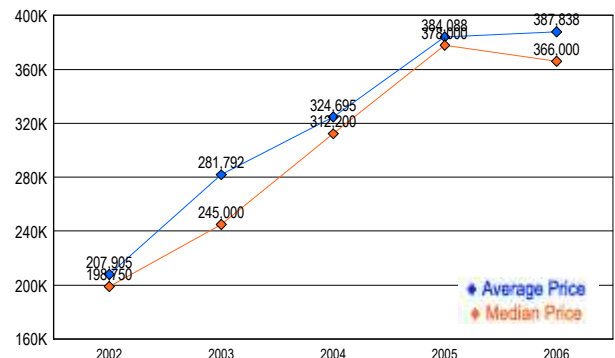
### SETTLEMENTS

Price Range	New This Month			Year-To-Date		
	2006	2005	% Change	2006	2005	% Change
0 - 149,999	0	1	-100.0	13	53	-75.5
150,000 - 199,999	6	2	200.0	69	81	-14.8
200,000 - 299,999	26	19	36.8	308	320	-3.8
300,000 - 399,999	38	27	40.7	513	457	12.3
400,000 - 499,999	17	25	-32.0	295	419	-29.6
500,000 - 599,999	6	9	-33.3	133	159	-16.4
600,000 - 699,999	3	2	50.0	60	64	-6.3
700,000 - 799,999	1	2	-50.0	14	26	-46.2
800,000 - 899,999	1	1	0.0	7	6	16.7
900,000 - 999,999	2	0	200.0	7	5	40.0
1,000,000 - 1,249,999	1	0	100.0	5	2	150.0
1,250,000 - 1,499,999	0	0	0.0	2	1	100.0
1,500,000 +	0	0	0.0	4	0	-400.0
<b>TOTALS</b>	<b>101</b>	<b>88</b>	<b>14.8</b>	<b>1430</b>	<b>1593</b>	<b>-10.2</b>

### MARKET BY PRICE RANGE



### AVERAGE & MEDIAN PRICE



DATA SOURCE: Metropolitan Regional Information Systems, Inc. (MRIS)

NOTES: Properties not listed through this Multiple Listing Service are not reflected. The term "sales" represents ratified purchase contracts. Current year information is preliminary and subject to revision. Current year-to-date contract information may not equal the sum of the monthly contract totals reported in