

# PRINCE WILLIAM COUNTY Residential Market Report



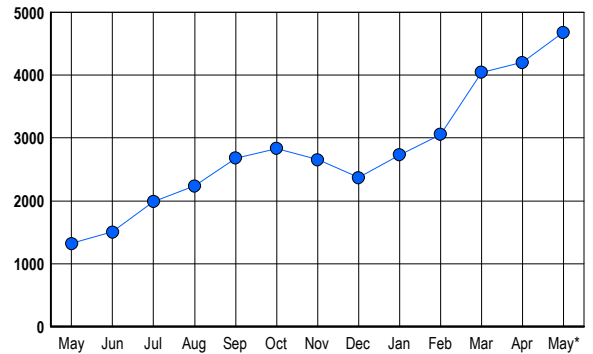
# HOUSING REPORT Single Family Homes May 2006

## LISTINGS

Prices Range	New This Month			Total Actives		
	2006	2005	% Change	2006	2005	% Change
0 - 149,999	5	6	-16.7	1	10	-90.0
150,000 - 199,999	1	2	-50.0	1	0	100.0
200,000 - 299,999	111	168	-33.9	182	50	264.0
300,000 - 399,999	562	552	1.8	1,243	261	376.2
400,000 - 499,999	458	339	35.1	1,127	303	271.9
500,000 - 599,999	347	248	39.9	915	254	260.2
600,000 - 699,999	225	146	54.1	618	216	186.1
700,000 - 799,999	109	48	127.1	273	92	196.7
800,000 - 899,999	56	23	143.5	134	48	179.2
900,000 - 999,999	23	8	187.5	81	38	113.2
1,000,000 - 1,249,999	12	9	33.3	50	28	78.6
1,250,000 - 1,499,999	10	6	66.7	35	8	337.5
1,500,000 +	5	2	150.0	19	13	46.2
<b>TOTALS</b>	<b>1924</b>	<b>1557</b>	<b>23.6</b>	<b>4679</b>	<b>1321</b>	<b>254.2</b>

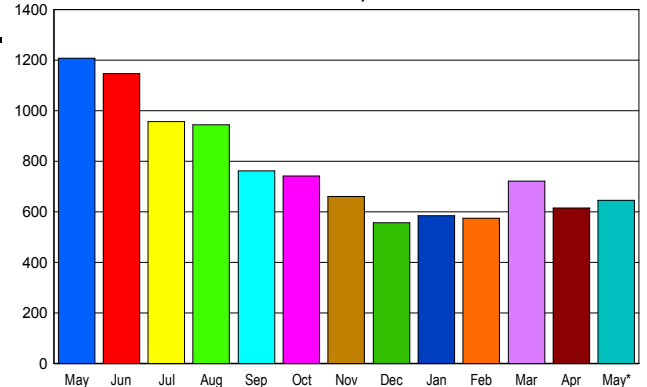
## INVENTORY TREND

Listings Active at End of Month



## SALES TREND

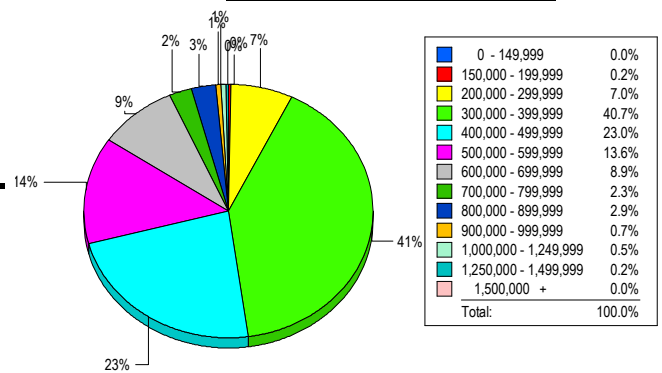
Contracts Ratified Per Month



## CONTRACTS

Price Range	New This Month			Year-To-Date		
	2006	2005	% Change	2006	2005	% Change
0 - 149,999	0	0	0.0	1	0	100.0
150,000 - 199,999	1	2	-50.0	4	14	-71.4
200,000 - 299,999	70	171	-59.1	304	887	-65.7
300,000 - 399,999	258	497	-48.1	1,246	1,822	-31.6
400,000 - 499,999	142	243	-41.6	682	850	-19.8
500,000 - 599,999	93	172	-45.9	398	613	-35.1
600,000 - 699,999	38	83	-54.2	213	314	-32.2
700,000 - 799,999	25	29	-13.8	92	118	-22.0
800,000 - 899,999	13	6	116.7	58	29	100.0
900,000 - 999,999	3	2	50.0	12	19	-36.8
1,000,000 - 1,249,999	1	1	0.0	9	17	-47.1
1,250,000 - 1,499,999	1	1	0.0	6	5	20.0
1,500,000 +	0	1	-100.0	1	3	-66.7
<b>TOTALS</b>	<b>645</b>	<b>1208</b>	<b>-46.6</b>	<b>3026</b>	<b>4691</b>	<b>-35.5</b>

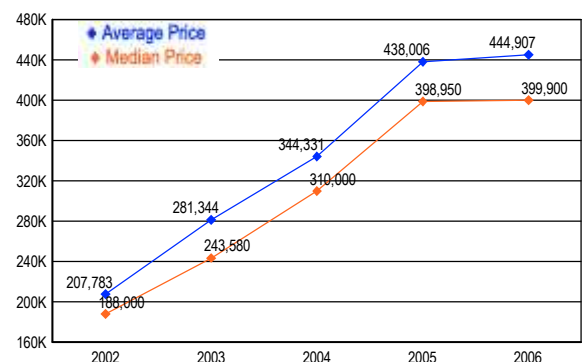
## MARKET BY PRICE RANGE



## SETTLEMENTS

Price Range	New This Month			Year-to-Date		
	2006	2005	% Change	2006	2005	% Change
0 - 149,999	0	0	0.0	1	0	100.0
150,000 - 199,999	1	3	-66.7	3	16	-81.3
200,000 - 299,999	39	120	-67.5	248	756	-67.2
300,000 - 399,999	228	397	-42.6	1,142	1,589	-28.1
400,000 - 499,999	129	194	-33.5	635	703	-9.7
500,000 - 599,999	76	135	-43.7	375	483	-22.4
600,000 - 699,999	50	64	-21.9	214	223	-4.0
700,000 - 799,999	13	25	-48.0	74	79	-6.3
800,000 - 899,999	16	8	100.0	51	25	104.0
900,000 - 999,999	4	2	100.0	15	18	-16.7
1,000,000 - 1,249,999	3	0	300.0	15	10	50.0
1,250,000 - 1,499,999	1	0	100.0	5	1	400.0
1,500,000 +	0	0	0.0	2	2	0.0
<b>TOTALS</b>	<b>560</b>	<b>948</b>	<b>-40.9</b>	<b>2780</b>	<b>3905</b>	<b>-28.8</b>

## AVERAGE & MEDIAN PRICE



DATA SOURCE: Metropolitan Regional Information Systems, Inc. (MRIS)

NOTES: Properties not listed through this Multiple Listing Service are not reflected. The term "sales" represents ratified purchase contracts. Current year information is preliminary and subject to revision. Current year-to-date contract information may not equal the sum of the monthly contract totals reported in