

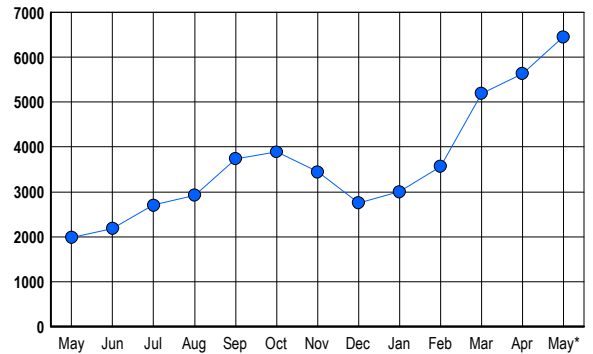


LISTINGS

Prices Range	New This Month			Total Actives		
	2006	2005	% Change	2006	2005	% Change
0 - 149,999	3	17	-82.4	2	17	-88.2
150,000 - 199,999	1	3	-66.7	0	0	0.0
200,000 - 299,999	9	21	-57.1	20	5	300.0
300,000 - 399,999	332	371	-10.5	493	131	276.3
400,000 - 499,999	735	642	14.5	1,284	294	336.7
500,000 - 599,999	713	523	36.3	1,398	298	369.1
600,000 - 699,999	512	434	18.0	1,025	330	210.6
700,000 - 799,999	260	259	0.4	564	225	150.7
800,000 - 899,999	210	146	43.8	424	144	194.4
900,000 - 999,999	126	92	37.0	271	98	176.5
1,000,000 - 1,249,999	96	82	17.1	279	109	156.0
1,250,000 - 1,499,999	116	79	46.8	263	115	128.7
1,500,000 +	118	95	24.2	426	221	92.8
TOTALS	3231	2764	16.9	6449	1987	224.6

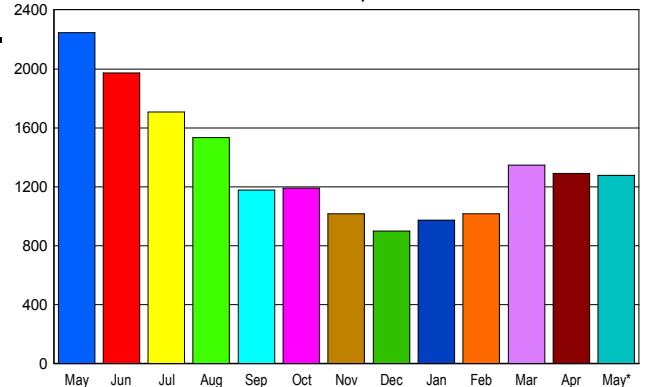
INVENTORY TREND

Listings Active at End of Month



SALES TREND

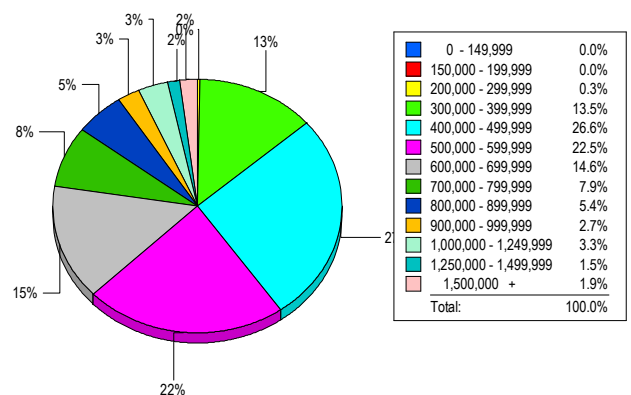
Contracts Ratified Per Month



CONTRACTS

Price Range	New This Month			Year-To-Date		
	2006	2005	% Change	2006	2005	% Change
0 - 149,999	0	1	-100.0	0	3	-100.0
150,000 - 199,999	1	3	-66.7	2	8	-75.0
200,000 - 299,999	8	21	-61.9	48	206	-76.7
300,000 - 399,999	186	363	-48.8	818	1,516	-46.0
400,000 - 499,999	330	582	-43.3	1,485	1,961	-24.3
500,000 - 599,999	274	466	-41.2	1,260	1,506	-16.3
600,000 - 699,999	179	318	-43.7	829	1,033	-19.7
700,000 - 799,999	95	175	-45.7	455	562	-19.0
800,000 - 899,999	59	108	-45.4	293	359	-18.4
900,000 - 999,999	33	68	-51.5	166	217	-23.5
1,000,000 - 1,249,999	41	63	-34.9	165	186	-11.3
1,250,000 - 1,499,999	35	34	2.9	124	149	-16.8
1,500,000 +	35	42	-16.7	143	139	2.9
TOTALS	1276	2244	-43.1	5788	7845	-26.2

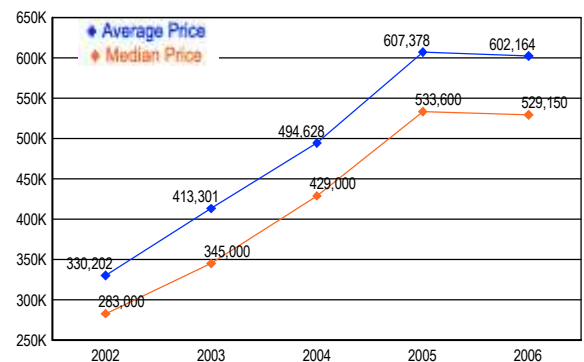
MARKET BY PRICE RANGE



SETTLEMENTS

Price Range	New This Month			Year-to-Date		
	2006	2005	% Change	2006	2005	% Change
0 - 149,999	0	1	-100.0	1	3	-66.7
150,000 - 199,999	0	4	-100.0	1	5	-80.0
200,000 - 299,999	3	12	-75.0	46	168	-72.6
300,000 - 399,999	152	210	-27.6	683	1,178	-42.0
400,000 - 499,999	301	438	-31.3	1,310	1,660	-21.1
500,000 - 599,999	254	375	-32.3	1,089	1,195	-8.9
600,000 - 699,999	165	244	-32.4	671	827	-18.9
700,000 - 799,999	89	150	-40.7	372	437	-14.9
800,000 - 899,999	61	93	-34.4	235	252	-6.7
900,000 - 999,999	30	52	-42.3	125	153	-18.3
1,000,000 - 1,249,999	37	41	-9.8	133	138	-3.6
1,250,000 - 1,499,999	17	38	-55.3	66	104	-36.5
1,500,000 +	21	27	-22.2	84	106	-20.8
TOTALS	1130	1685	-32.9	4816	6226	-22.6

AVERAGE & MEDIAN PRICE



DATA SOURCE: Metropolitan Regional Information Systems, Inc. (MRIS)

NOTES: Properties not listed through this Multiple Listing Service are not reflected. The term "sales" represents ratified purchase contracts. Current year information is preliminary and subject to revision. Current year-to-date contract information may not equal the sum of the monthly contract totals reported in