

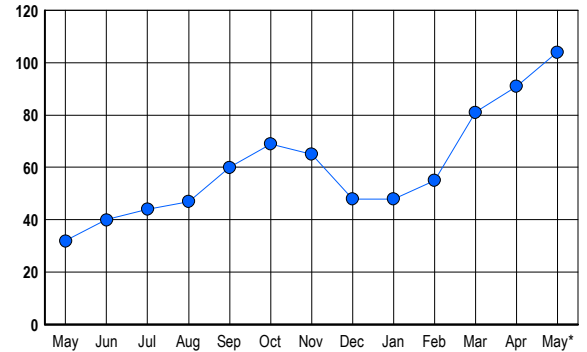


LISTINGS

Prices Range	New This Month			Total Actives		
	2006	2005	% Change	2006	2005	% Change
0 - 149,999	0	0	0.0	0	0	0.0
150,000 - 199,999	0	0	0.0	0	0	0.0
200,000 - 299,999	1	0	100.0	1	0	100.0
300,000 - 399,999	4	3	33.3	4	0	400.0
400,000 - 499,999	16	10	60.0	22	6	266.7
500,000 - 599,999	16	8	100.0	26	4	550.0
600,000 - 699,999	8	14	-42.9	19	9	111.1
700,000 - 799,999	4	4	0.0	5	4	25.0
800,000 - 899,999	4	2	100.0	6	1	500.0
900,000 - 999,999	2	1	100.0	3	3	0.0
1,000,000 - 1,249,999	6	1	500.0	13	1	1,200.0
1,250,000 - 1,499,999	5	0	500.0	5	4	25.0
1,500,000 +	0	0	0.0	0	0	0.0
TOTALS	66	43	53.5	104	32	225.0

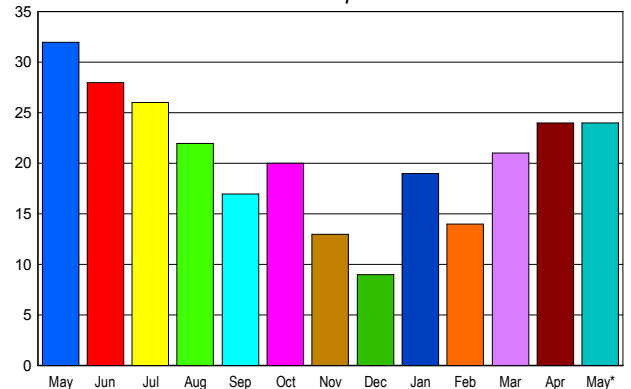
INVENTORY TREND

Listings Active at End of Month



SALES TREND

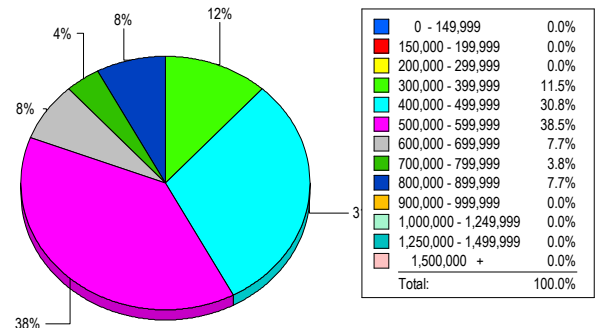
Contracts Ratified Per Month



CONTRACTS

Price Range	New This Month			Year-To-Date		
	2006	2005	% Change	2006	2005	% Change
0 - 149,999	0	0	0.0	0	0	0.0
150,000 - 199,999	0	0	0.0	0	0	0.0
200,000 - 299,999	0	0	0.0	0	3	-100.0
300,000 - 399,999	3	2	50.0	9	17	-47.1
400,000 - 499,999	9	6	50.0	26	49	-46.9
500,000 - 599,999	5	10	-50.0	27	34	-20.6
600,000 - 699,999	1	8	-87.5	21	22	-4.5
700,000 - 799,999	2	1	100.0	5	4	25.0
800,000 - 899,999	0	2	-100.0	3	4	-25.0
900,000 - 999,999	2	2	0.0	3	4	-25.0
1,000,000 - 1,249,999	2	1	100.0	4	2	100.0
1,250,000 - 1,499,999	0	0	0.0	2	0	200.0
1,500,000 +	0	0	0.0	0	0	0.0
TOTALS	24	32	-25.0	100	139	-28.1

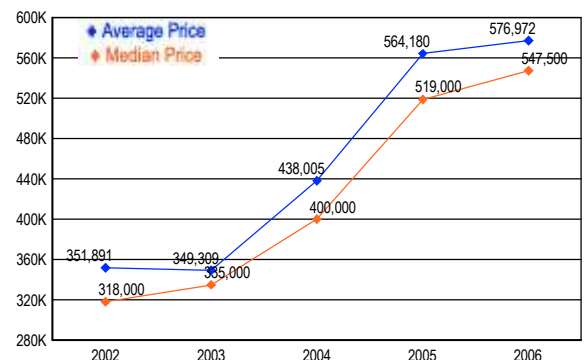
MARKET BY PRICE RANGE



SETTLEMENTS

Price Range	New This Month			Year-to-Date		
	2006	2005	% Change	2006	2005	% Change
0 - 149,999	0	0	0.0	0	0	0.0
150,000 - 199,999	0	0	0.0	0	0	0.0
200,000 - 299,999	0	0	0.0	0	2	-100.0
300,000 - 399,999	3	5	-40.0	6	16	-62.5
400,000 - 499,999	8	9	-11.1	23	42	-45.2
500,000 - 599,999	10	7	42.9	22	32	-31.3
600,000 - 699,999	2	7	-71.4	19	16	18.8
700,000 - 799,999	1	1	0.0	1	3	-66.7
800,000 - 899,999	2	1	100.0	4	2	100.0
900,000 - 999,999	0	1	-100.0	0	4	-100.0
1,000,000 - 1,249,999	0	0	0.0	2	2	0.0
1,250,000 - 1,499,999	0	0	0.0	1	0	100.0
1,500,000 +	0	0	0.0	0	0	0.0
TOTALS	26	31	-16.1	78	119	-34.5

AVERAGE & MEDIAN PRICE



DATA SOURCE: Metropolitan Regional Information Systems, Inc. (MRIS)

NOTES: Properties not listed through this Multiple Listing Service are not reflected. The term "sales" represents ratified purchase contracts. Current year information is preliminary and subject to revision. Current year-to-date contract information may not equal the sum of the monthly contract totals reported in