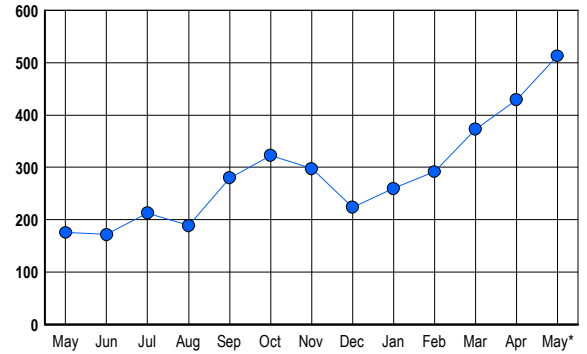


LISTINGS

Prices Range	New This Month			Total Actives		
	2006	2005	% Change	2006	2005	% Change
0 - 149,999	0	1	-100.0	0	2	-100.0
150,000 - 199,999	1	0	100.0	2	0	200.0
200,000 - 299,999	3	1	200.0	5	0	500.0
300,000 - 399,999	10	16	-37.5	16	8	100.0
400,000 - 499,999	22	32	-31.3	45	5	800.0
500,000 - 599,999	41	38	7.9	58	12	383.3
600,000 - 699,999	60	49	22.4	93	38	144.7
700,000 - 799,999	44	37	18.9	70	15	366.7
800,000 - 899,999	31	19	63.2	46	20	130.0
900,000 - 999,999	35	18	94.4	49	14	250.0
1,000,000 - 1,249,999	21	12	75.0	42	13	223.1
1,250,000 - 1,499,999	12	12	0.0	32	21	52.4
1,500,000 +	35	20	75.0	55	28	96.4
TOTALS	315	255	23.5	513	176	191.5

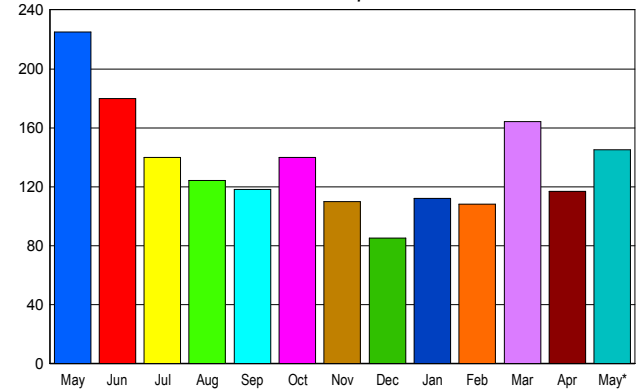
INVENTORY TREND

Listings Active at End of Month



SALES TREND

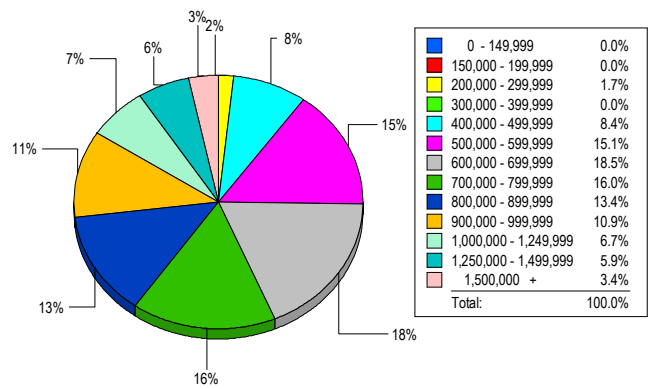
Contracts Ratified Per Month



CONTRACTS

Price Range	New This Month			Year-To-Date		
	2006	2005	% Change	2006	2005	% Change
0 - 149,999	0	0	0.0	0	0	0.0
150,000 - 199,999	0	0	0.0	0	0	0.0
200,000 - 299,999	1	1	0.0	4	5	-20.0
300,000 - 399,999	4	10	-60.0	21	41	-48.8
400,000 - 499,999	15	37	-59.5	62	103	-39.8
500,000 - 599,999	28	42	-33.3	118	161	-26.7
600,000 - 699,999	27	46	-41.3	138	155	-11.0
700,000 - 799,999	22	42	-47.6	98	99	-1.0
800,000 - 899,999	14	7	100.0	60	53	13.2
900,000 - 999,999	13	14	-7.1	50	44	13.6
1,000,000 - 1,249,999	11	16	-31.3	41	36	13.9
1,250,000 - 1,499,999	5	4	25.0	26	30	-13.3
1,500,000 +	5	6	-16.7	26	22	18.2
TOTALS	145	225	-35.6	644	749	-14.0

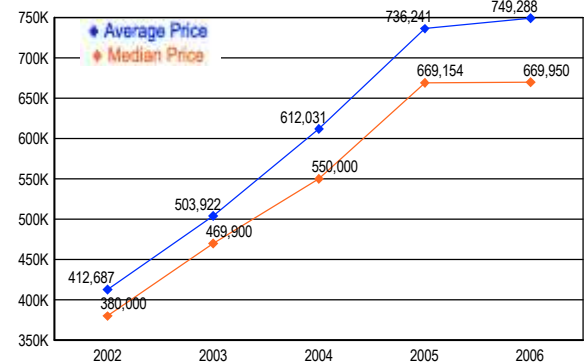
MARKET BY PRICE RANGE



SETTLEMENTS

Price Range	New This Month			Year-to-Date		
	2006	2005	% Change	2006	2005	% Change
0 - 149,999	0	0	0.0	0	0	0.0
150,000 - 199,999	0	0	0.0	0	0	0.0
200,000 - 299,999	2	0	200.0	4	1	300.0
300,000 - 399,999	0	3	-100.0	19	24	-20.8
400,000 - 499,999	10	16	-37.5	58	72	-19.4
500,000 - 599,999	18	34	-47.1	100	129	-22.5
600,000 - 699,999	22	41	-46.3	126	129	-2.3
700,000 - 799,999	19	29	-34.5	78	80	-2.5
800,000 - 899,999	16	19	-15.8	53	55	-3.6
900,000 - 999,999	13	14	-7.1	32	38	-15.8
1,000,000 - 1,249,999	8	9	-11.1	38	37	2.7
1,250,000 - 1,499,999	7	6	16.7	19	25	-24.0
1,500,000 +	4	2	100.0	19	19	0.0
TOTALS	119	173	-31.2	546	609	-10.3

AVERAGE & MEDIAN PRICE



DATA SOURCE: Metropolitan Regional Information Systems, Inc. (MRIS)

NOTES: Properties not listed through this Multiple Listing Service are not reflected. The term "sales" represents ratified purchase contracts. Current year information is preliminary and subject to revision. Current year-to-date contract information may not equal the sum of the monthly contract totals reported in