

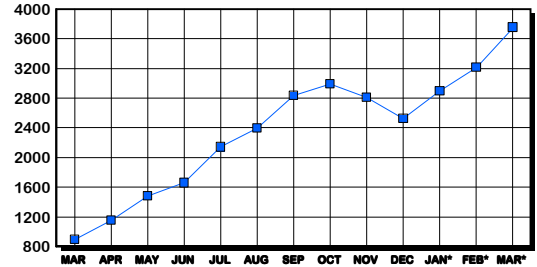
PRINCE WILLIAM COUNTY HOUSING REPORT

Residential Market Report Single Family Homes March 2006

LISTINGS

Price Range	New This Month			Total Active		
	2006	2005	% Change	2006	2005	% Change
0-149999	4	4	0.0	80	76	5.3
150000-299999	76	176	-56.8	189	107	76.6
300000-449999	767	540	42.0	1,278	203	529.6
450000-599999	600	306	96.1	1,162	216	438.0
600000-749999	330	157	110.2	682	198	244.4
750000-999999	124	46	169.6	276	76	263.2
1000000 & Over	36	9	300.0	84	25	236.0
Grand Total:	1,937	1,238	56.5	3,751	901	316.3

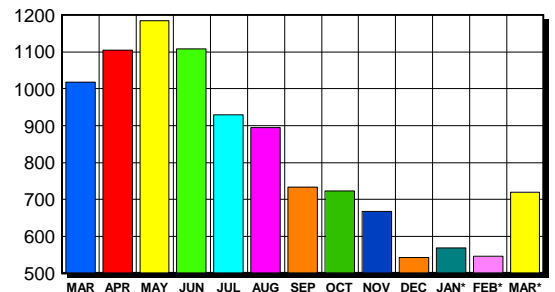
INVENTORY TREND Listings Active At End Of Month



CONTRACTS

Price Range	New This Month			Year-To-Date		
	2006	2005	% Change	2006	2005	% Change
0-149999	0	0	0.0	1	0	100.0
150000-299999	67	182	-63.2	192	561	-65.8
300000-449999	397	482	-17.6	992	1,167	-15.0
450000-599999	149	213	-30.0	401	511	-21.5
600000-749999	78	82	-4.9	174	180	-3.3
750000-999999	25	25	0.0	64	57	12.3
1000000 & Over	4	4	0.0	10	12	-16.7
Grand Total:	720	988	-27.1	1,834	2,488	-26.3

SALES TREND Contracts Ratified Per Month



SETTLEMENTS

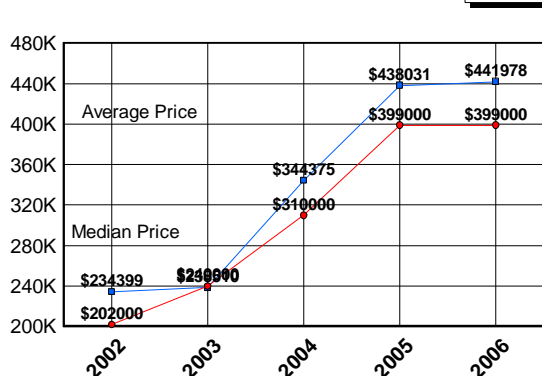
Price Range	New This Month			Year-To-Date		
	2006	2005	% Change	2006	2005	% Change
0-149999	0	0	0.0	1	0	100.0
150000-299999	43	169	-74.6	145	535	-72.9
300000-449999	302	360	-16.1	849	917	-7.4
450000-599999	147	165	-10.9	346	380	-8.9
600000-749999	54	52	3.8	137	106	29.2
750000-999999	24	9	166.7	49	25	96.0
1000000 & Over	6	2	200.0	14	9	55.6
Grand Total:	576	757	-23.9	1,541	1,972	-21.9

DATA SOURCE

Metropolitan Regional Information System (MRIS)

NOTES: Properties not listed through this Multiple Listing Service are not reflected. The term "sales" represents ratified purchase contracts. Current year information is preliminary and subject to revision. Current year- to- date contract information may not equal the sum of the monthly contract totals reported in previous issues. Prices are not adjusted for inflation.

AVERAGE & MEDIAN PRICE



MARKET BY PRICE RANGE

