

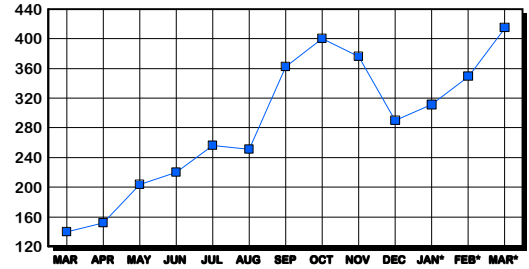
# ALEXANDRIA CITY HOUSING REPORT

## Residential Market Report Single Family Homes March 2006

### LISTINGS

Price Range	New This Month			Total Active		
	2006	2005	% Change	2006	2005	% Change
0-149999	2	0	0.0	12	9	100.0
150000-299999	3	7	-57.1	18	14	28.6
300000-449999	27	25	8.0	51	24	112.5
450000-599999	84	45	86.7	106	24	341.7
600000-749999	79	39	102.6	98	19	415.8
750000-999999	49	29	69.0	59	17	247.1
1000000 & Over	37	17	117.6	71	33	115.2
<b>Grand Total:</b>	<b>281</b>	<b>162</b>	<b>73.5</b>	<b>415</b>	<b>140</b>	<b>196.4</b>

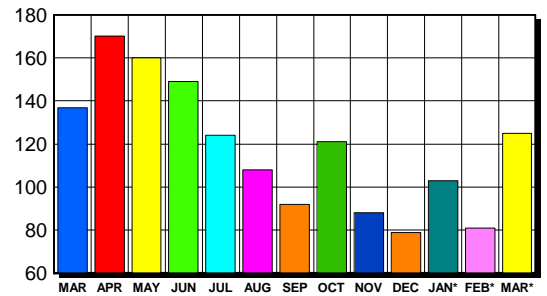
### INVENTORY TREND Listings Active At End Of Month



### CONTRACTS

Price Range	New This Month			Year-To-Date		
	2006	2005	% Change	2006	2005	% Change
0-149999	0	0	0.0	0	0	0.0
150000-299999	4	6	-33.3	4	9	-55.6
300000-449999	12	18	-33.3	45	63	-28.6
450000-599999	35	36	-2.8	93	104	-10.6
600000-749999	30	30	0.0	85	78	9.0
750000-999999	28	26	7.7	58	53	9.4
1000000 & Over	16	12	33.3	24	31	-22.6
<b>Grand Total:</b>	<b>125</b>	<b>128</b>	<b>-2.3</b>	<b>309</b>	<b>338</b>	<b>-8.6</b>

### SALES TREND Contracts Ratified Per Month



### SETTLEMENTS

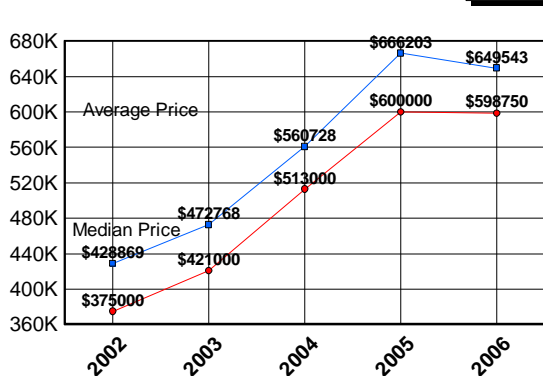
Price Range	New This Month			Year-To-Date		
	2006	2005	% Change	2006	2005	% Change
0-149999	0	0	0.0	0	0	0.0
150000-299999	3	3	0.0	3	13	-76.9
300000-449999	18	27	-33.3	44	57	-22.8
450000-599999	33	43	-23.3	79	105	-24.8
600000-749999	28	22	27.3	68	54	25.9
750000-999999	17	20	-15.0	41	38	7.9
1000000 & Over	5	10	-50.0	13	20	-35.0
<b>Grand Total:</b>	<b>104</b>	<b>125</b>	<b>-16.8</b>	<b>248</b>	<b>287</b>	<b>-13.6</b>

### DATA SOURCE

Metropolitan Regional Information System (MRIS)

NOTES: Properties not listed through this Multiple Listing Service are not reflected. The term "sales" represents ratified purchase contracts. Current year information is preliminary and subject to revision. Current year-to-date contract information may not equal the sum of the monthly contract totals reported in previous issues. Prices are not adjusted for inflation.

### AVERAGE & MEDIAN PRICE



### MARKET BY PRICE RANGE

