

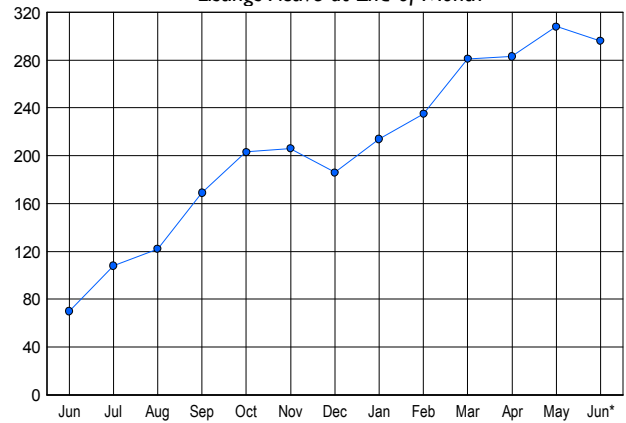


LISTINGS

Price Range	New This Month			Total Actives		
	2006	2005	% Change	2006	2005	% Change
0 - 149,999	1	0	100.0	5	0	0.0
150,000 - 199,999	6	11	-45.5	11	4	175.0
200,000 - 299,999	53	64	-17.2	121	15	706.7
300,000 - 399,999	41	25	64.0	99	27	266.7
400,000 - 499,999	11	6	83.3	32	12	166.7
500,000 - 599,999	5	3	66.7	16	7	128.6
600,000 - 699,999	3	2	50.0	8	3	166.7
700,000 - 799,999	0	1	-100.0	0	2	-100.0
800,000 - 899,999	0	0	0.0	1	0	0.0
900,000 - 999,999	1	0	100.0	2	0	0.0
1,000,000 - 1,249,999	0	0	0.0	0	0	0.0
1,250,000 - 1,499,999	0	0	0.0	0	0	0.0
1,500,000 +	0	0	0.0	1	0	0.0
TOTALS	121	112	8.0	296	70	322.9

INVENTORY TREND

Listings Active at End of Month

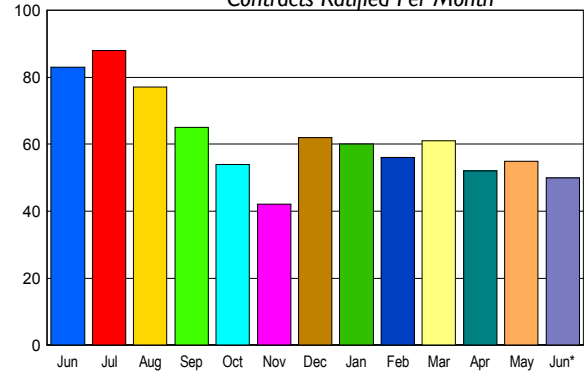


CONTRACTS

Price Range	New This Month			Year-To-Date		
	2006	2005	% Change	2006	2005	% Change
0 - 149,999	2	0	200.0	5	19	-73.7
150,000 - 199,999	5	13	-61.5	27	57	-52.6
200,000 - 299,999	33	56	-41.1	196	302	-35.1
300,000 - 399,999	8	11	-27.3	73	53	37.7
400,000 - 499,999	1	3	-66.7	15	15	0.0
500,000 - 599,999	1	0	100.0	4	4	0.0
600,000 - 699,999	0	0	0.0	2	2	0.0
700,000 - 799,999	0	0	0.0	0	0	0.0
800,000 - 899,999	0	0	0.0	0	0	0.0
900,000 - 999,999	0	0	0.0	0	0	0.0
1,000,000 - 1,249,999	0	0	0.0	0	0	0.0
1,250,000 - 1,499,999	0	0	0.0	0	0	0.0
1,500,000 +	0	0	0.0	0	0	0.0
TOTALS	50	83	-39.8	322	452	-28.8

SALES TREND

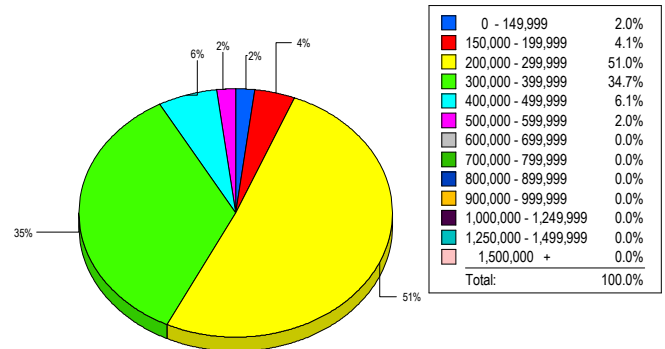
Contracts Ratified Per Month



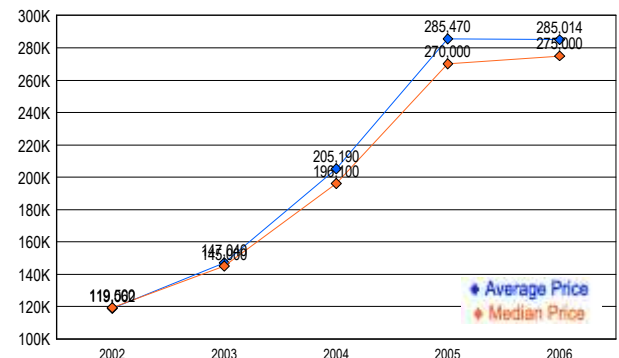
SETTLEMENTS

Price Range	New This Month			Year-To-Date		
	2006	2005	% Change	2006	2005	% Change
0 - 149,999	1	2	-50.0	2	16	-87.5
150,000 - 199,999	2	5	-60.0	21	51	-58.8
200,000 - 299,999	25	52	-51.9	170	269	-36.8
300,000 - 399,999	17	17	0.0	81	53	52.8
400,000 - 499,999	3	3	0.0	16	10	60.0
500,000 - 599,999	1	2	-50.0	2	4	-50.0
600,000 - 699,999	0	1	-100.0	1	1	0.0
700,000 - 799,999	0	0	0.0	0	0	0.0
800,000 - 899,999	0	0	0.0	0	0	0.0
900,000 - 999,999	0	0	0.0	0	0	0.0
1,000,000 - 1,249,999	0	0	0.0	0	0	0.0
1,250,000 - 1,499,999	0	0	0.0	0	0	0.0
1,500,000 +	0	0	0.0	0	0	0.0
TOTALS	49	82	-40.2	293	404	-27.5

MARKET BY PRICE RANGE



AVERAGE & MEDIAN PRICE



DATA SOURCE: Metropolitan Regional Information Systems, Inc. (MRIS)

NOTES: Properties not listed through this Multiple Listing Service are not reflected. The term "sales" represents ratified purchase contracts. Current year information is preliminary and subject to revision. Current year-to-date contract information may not equal the sum of the monthly contract totals reported in