

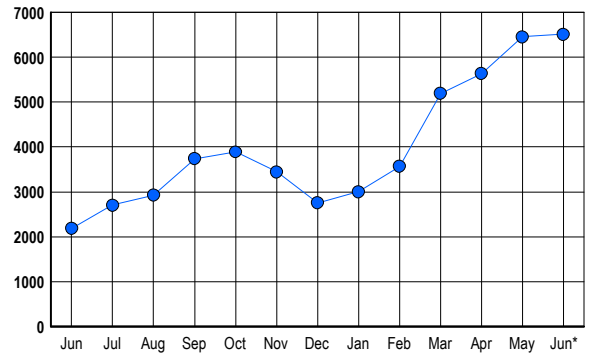


### LISTINGS

Prices Range	New This Month			Total Actives		
	2006	2005	% Change	2006	2005	% Change
0 - 149,999	6	5	20.0	2	20	-90.0
150,000 - 199,999	1	2	-50.0	1	1	0.0
200,000 - 299,999	17	16	6.3	26	5	420.0
300,000 - 399,999	315	358	-12.0	596	125	376.8
400,000 - 499,999	665	722	-7.9	1,390	310	348.4
500,000 - 599,999	605	634	-4.6	1,337	395	238.5
600,000 - 699,999	460	477	-3.6	1,031	361	185.6
700,000 - 799,999	255	280	-8.9	550	234	135.0
800,000 - 899,999	162	171	-5.3	410	157	161.1
900,000 - 999,999	108	125	-13.6	254	118	115.3
1,000,000 - 1,249,999	101	87	16.1	277	100	177.0
1,250,000 - 1,499,999	70	87	-19.5	237	131	80.9
1,500,000 +	82	89	-7.9	395	227	74.0
<b>TOTALS</b>	<b>2847</b>	<b>3053</b>	<b>-6.7</b>	<b>6506</b>	<b>2184</b>	<b>197.9</b>

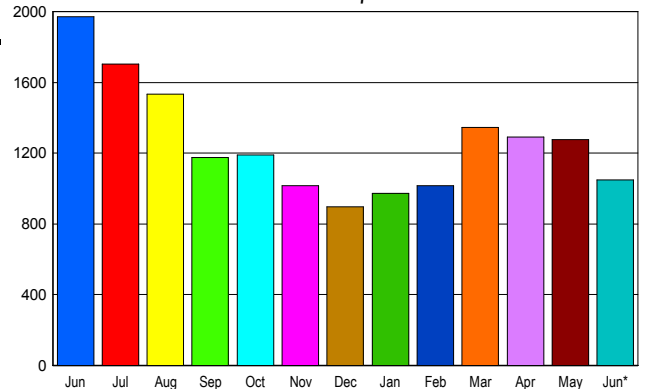
### INVENTORY TREND

Listings Active at End of Month



### SALES TREND

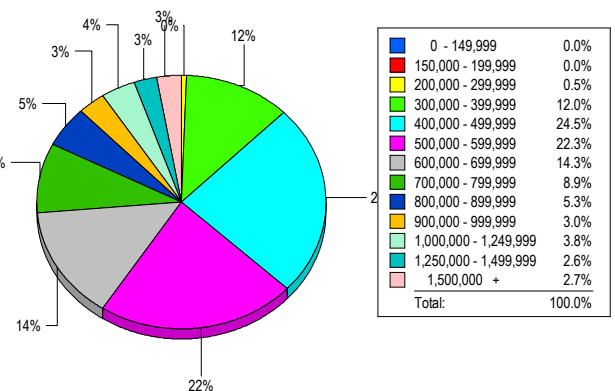
Contracts Ratified Per Month



### CONTRACTS

Price Range	New This Month			Year-To-Date		
	2006	2005	% Change	2006	2005	% Change
0 - 149,999	0	0	0.0	0	3	-100.0
150,000 - 199,999	0	1	-100.0	1	9	-88.9
200,000 - 299,999	6	12	-50.0	55	217	-74.7
300,000 - 399,999	156	312	-50.0	969	1,813	-46.6
400,000 - 499,999	262	529	-50.5	1,744	2,474	-29.5
500,000 - 599,999	240	393	-38.9	1,502	1,887	-20.4
600,000 - 699,999	151	294	-48.6	986	1,316	-25.1
700,000 - 799,999	70	168	-58.3	518	726	-28.7
800,000 - 899,999	50	78	-35.9	339	434	-21.9
900,000 - 999,999	25	69	-63.8	194	284	-31.7
1,000,000 - 1,249,999	39	39	0.0	201	226	-11.1
1,250,000 - 1,499,999	23	46	-50.0	147	194	-24.2
1,500,000 +	27	31	-12.9	169	171	-1.2
<b>TOTALS</b>	<b>1049</b>	<b>1972</b>	<b>-46.8</b>	<b>6825</b>	<b>9754</b>	<b>-30.0</b>

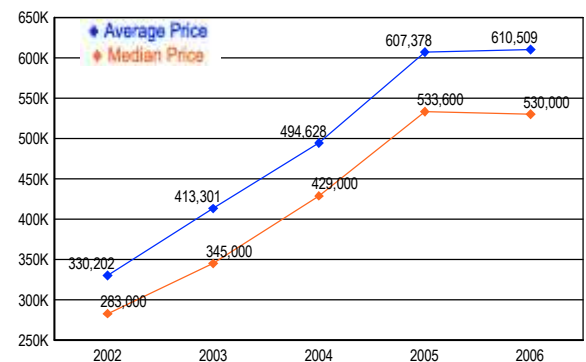
### MARKET BY PRICE RANGE



### SETTLEMENTS

Price Range	New This Month			Year-to-Date		
	2006	2005	% Change	2006	2005	% Change
0 - 149,999	0	0	0.0	1	3	-66.7
150,000 - 199,999	0	1	-100.0	1	6	-83.3
200,000 - 299,999	6	13	-53.8	53	183	-71.0
300,000 - 399,999	150	246	-39.0	848	1,448	-41.4
400,000 - 499,999	307	491	-37.5	1,646	2,179	-24.5
500,000 - 599,999	280	439	-36.2	1,398	1,669	-16.2
600,000 - 699,999	179	325	-44.9	866	1,171	-26.0
700,000 - 799,999	112	189	-40.7	486	638	-23.8
800,000 - 899,999	66	95	-30.5	302	351	-14.0
900,000 - 999,999	38	67	-43.3	169	222	-23.9
1,000,000 - 1,249,999	48	58	-17.2	185	197	-6.1
1,250,000 - 1,499,999	33	32	3.1	102	137	-25.5
1,500,000 +	34	35	-2.9	119	144	-17.4
<b>TOTALS</b>	<b>1253</b>	<b>1991</b>	<b>-37.1</b>	<b>6176</b>	<b>8348</b>	<b>-26.0</b>

### AVERAGE & MEDIAN PRICE



DATA SOURCE: Metropolitan Regional Information Systems, Inc. (MRIS)

NOTES: Properties not listed through this Multiple Listing Service are not reflected. The term "sales" represents ratified purchase contracts. Current year information is preliminary and subject to revision. Current year-to-date contract information may not equal the sum of the monthly contract totals reported in