

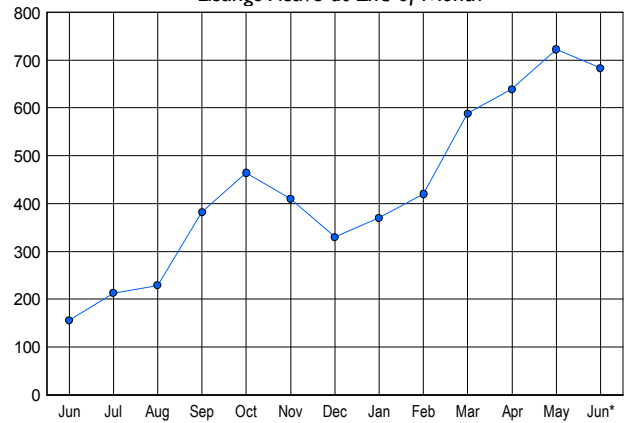


### LISTINGS

Price Range	New This Month			Total Actives		
	2006	2005	% Change	2006	2005	% Change
0 - 149,999	5	4	25.0	3	5	-40.0
150,000 - 199,999	12	13	-7.7	25	6	316.7
200,000 - 299,999	62	47	31.9	135	24	462.5
300,000 - 399,999	125	64	95.3	214	33	548.5
400,000 - 499,999	66	71	-7.0	147	40	267.5
500,000 - 599,999	34	30	13.3	73	18	305.6
600,000 - 699,999	17	7	142.9	32	10	220.0
700,000 - 799,999	5	5	0.0	12	6	100.0
800,000 - 899,999	0	1	-100.0	5	4	25.0
900,000 - 999,999	4	1	300.0	7	2	250.0
1,000,000 - 1,249,999	3	1	200.0	12	2	500.0
1,250,000 - 1,499,999	2	0	200.0	11	3	266.7
1,500,000 +	0	0	0.0	7	3	133.3
<b>TOTALS</b>	<b>335</b>	<b>244</b>	<b>37.3</b>	<b>683</b>	<b>156</b>	<b>337.8</b>

### INVENTORY TREND

Listings Active at End of Month

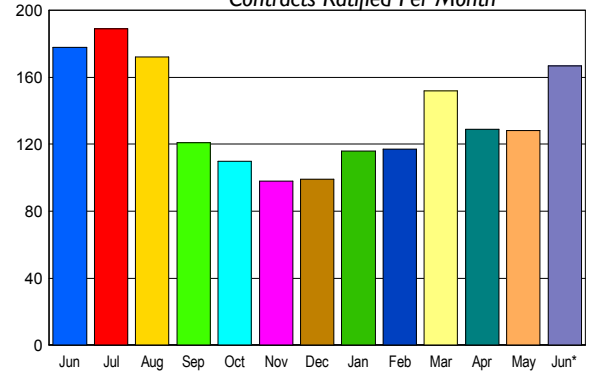


### CONTRACTS

Price Range	New This Month			Year-To-Date		
	2006	2005	% Change	2006	2005	% Change
0 - 149,999	2	1	100.0	5	41	-87.8
150,000 - 199,999	8	13	-38.5	39	62	-37.1
200,000 - 299,999	35	34	2.9	166	217	-23.5
300,000 - 399,999	61	50	22.0	292	269	8.6
400,000 - 499,999	34	56	-39.3	179	207	-13.5
500,000 - 599,999	19	17	11.8	81	74	9.5
600,000 - 699,999	7	5	40.0	38	26	46.2
700,000 - 799,999	0	2	-100.0	6	10	-40.0
800,000 - 899,999	0	0	0.0	2	4	-50.0
900,000 - 999,999	1	0	100.0	5	2	150.0
1,000,000 - 1,249,999	0	0	0.0	0	3	-100.0
1,250,000 - 1,499,999	0	0	0.0	1	0	100.0
1,500,000 +	0	0	0.0	0	1	-100.0
<b>TOTALS</b>	<b>167</b>	<b>178</b>	<b>-6.2</b>	<b>814</b>	<b>916</b>	<b>-11.1</b>

### SALES TREND

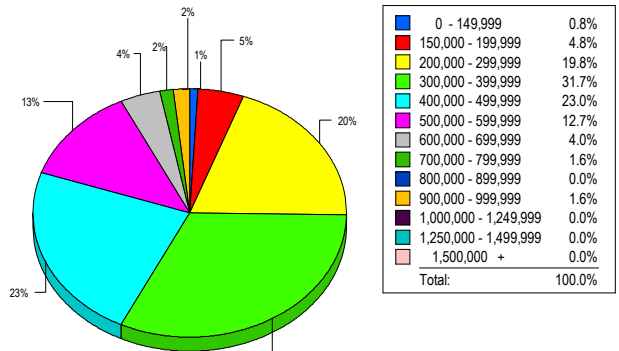
Contracts Ratified Per Month



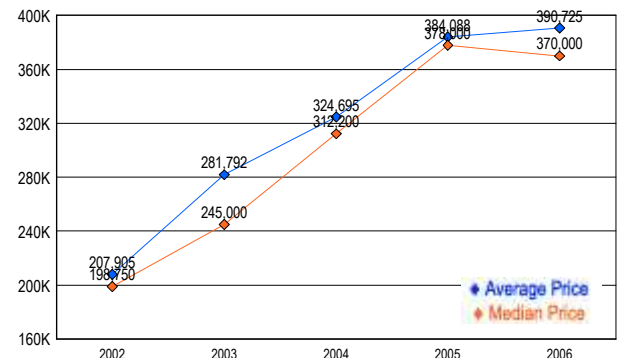
### SETTLEMENTS

Price Range	New This Month			Year-To-Date		
	2006	2005	% Change	2006	2005	% Change
0 - 149,999	1	2	-50.0	6	36	-83.3
150,000 - 199,999	6	4	50.0	30	52	-42.3
200,000 - 299,999	25	31	-19.4	142	174	-18.4
300,000 - 399,999	40	52	-23.1	250	236	5.9
400,000 - 499,999	29	55	-47.3	152	194	-21.6
500,000 - 599,999	16	15	6.7	67	72	-6.9
600,000 - 699,999	5	7	-28.6	33	22	50.0
700,000 - 799,999	2	1	100.0	8	13	-38.5
800,000 - 899,999	0	0	0.0	3	3	0.0
900,000 - 999,999	2	0	200.0	3	4	-25.0
1,000,000 - 1,249,999	0	0	0.0	0	1	-100.0
1,250,000 - 1,499,999	0	0	0.0	0	1	-100.0
1,500,000 +	0	0	0.0	2	0	-200.0
<b>TOTALS</b>	<b>126</b>	<b>167</b>	<b>-24.6</b>	<b>696</b>	<b>808</b>	<b>-13.9</b>

### MARKET BY PRICE RANGE



### AVERAGE & MEDIAN PRICE



DATA SOURCE: Metropolitan Regional Information Systems, Inc. (MRIS)

NOTES: Properties not listed through this Multiple Listing Service are not reflected. The term "sales" represents ratified purchase contracts. Current year information is preliminary and subject to revision. Current year-to-date contract information may not equal the sum of the monthly contract totals reported in