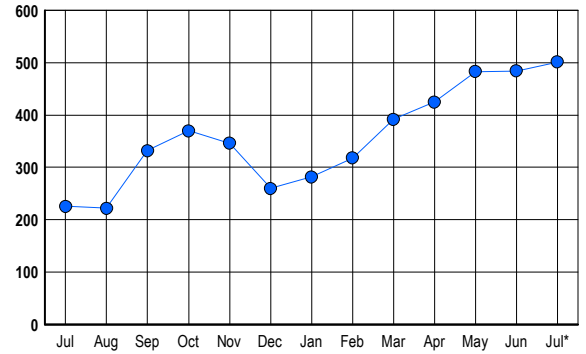


LISTINGS

Prices Range	New This Month			Total Actives		
	2006	2005	% Change	2006	2005	% Change
0 - 149,999	0	0	0.0	1	4	-75.0
150,000 - 199,999	0	0	0.0	0	0	0.0
200,000 - 299,999	1	1	0.0	7	1	600.0
300,000 - 399,999	15	9	66.7	27	6	350.0
400,000 - 499,999	32	35	-8.6	72	29	148.3
500,000 - 599,999	51	43	18.6	112	30	273.3
600,000 - 699,999	25	44	-43.2	98	45	117.8
700,000 - 799,999	15	31	-51.6	56	37	51.4
800,000 - 899,999	14	15	-6.7	38	13	192.3
900,000 - 999,999	8	9	-11.1	19	16	18.8
1,000,000 - 1,249,999	6	9	-33.3	22	18	22.2
1,250,000 - 1,499,999	8	4	100.0	25	10	150.0
1,500,000 +	7	7	0.0	24	17	41.2
TOTALS	182	207	-12.1	501	226	121.7

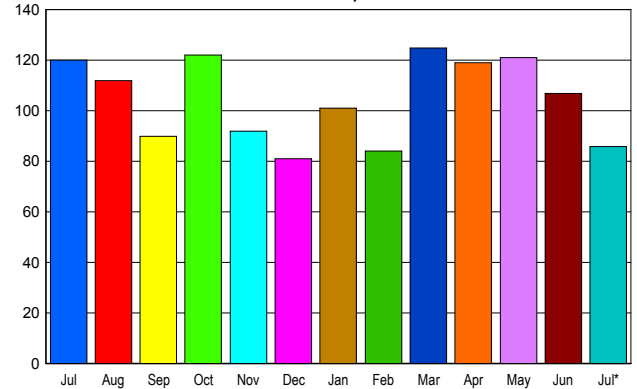
INVENTORY TREND

Listings Active at End of Month



SALES TREND

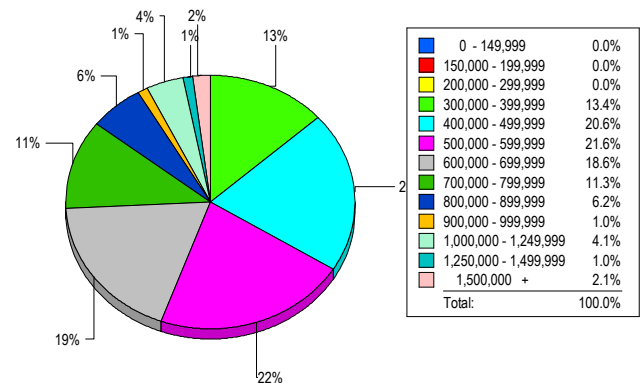
Contracts Ratified Per Month



CONTRACTS

Price Range	New This Month			Year-To-Date		
	2006	2005	% Change	2006	2005	% Change
0 - 149,999	0	0	0.0	1	1	0.0
150,000 - 199,999	0	0	0.0	0	0	0.0
200,000 - 299,999	0	2	-100.0	7	19	-63.2
300,000 - 399,999	7	5	40.0	59	75	-21.3
400,000 - 499,999	20	30	-33.3	136	180	-24.4
500,000 - 599,999	15	23	-34.8	156	226	-31.0
600,000 - 699,999	15	24	-37.5	136	168	-19.0
700,000 - 799,999	9	15	-40.0	85	95	-10.5
800,000 - 899,999	7	6	16.7	56	63	-11.1
900,000 - 999,999	6	8	-25.0	34	31	9.7
1,000,000 - 1,249,999	2	3	-33.3	25	32	-21.9
1,250,000 - 1,499,999	2	2	0.0	22	21	4.8
1,500,000 +	3	2	50.0	20	22	-9.1
TOTALS	86	120	-28.3	737	933	-21.0

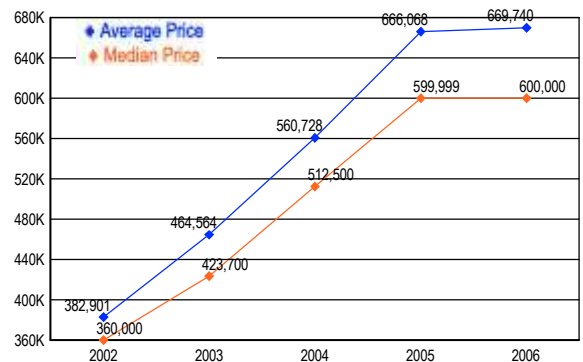
MARKET BY PRICE RANGE



SETTLEMENTS

Price Range	New This Month			Year-to-Date		
	2006	2005	% Change	2006	2005	% Change
0 - 149,999	0	1	-100.0	1	1	0.0
150,000 - 199,999	0	0	0.0	0	2	-100.0
200,000 - 299,999	0	2	-100.0	6	22	-72.7
300,000 - 399,999	13	11	18.2	58	60	-3.3
400,000 - 499,999	20	25	-20.0	123	154	-20.1
500,000 - 599,999	21	24	-12.5	152	202	-24.8
600,000 - 699,999	18	25	-28.0	133	177	-24.9
700,000 - 799,999	11	13	-15.4	82	83	-1.2
800,000 - 899,999	6	14	-57.1	53	65	-18.5
900,000 - 999,999	1	8	-87.5	25	35	-28.6
1,000,000 - 1,249,999	4	8	-50.0	28	38	-26.3
1,250,000 - 1,499,999	1	2	-50.0	13	16	-18.8
1,500,000 +	2	6	-66.7	18	21	-14.3
TOTALS	97	139	-30.2	692	876	-21.0

AVERAGE & MEDIAN PRICE



DATA SOURCE: Metropolitan Regional Information Systems, Inc. (MRIS)

NOTES: Properties not listed through this Multiple Listing Service are not reflected. The term "sales" represents ratified purchase contracts. Current year information is preliminary and subject to revision. Current year-to-date contract information may not equal the sum of the monthly contract totals reported in