

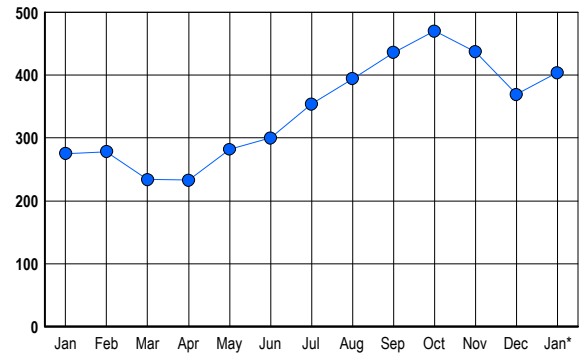


LISTINGS

Prices Range	New This Month			Total Actives		
	2006	2005	% Change	2006	2005	% Change
0 - 149,999	0	0	0.0	0	6	-100.0
150,000 - 199,999	0	3	-100.0	0	3	-100.0
200,000 - 299,999	22	21	4.8	21	31	-32.3
300,000 - 399,999	35	23	52.2	72	41	75.6
400,000 - 499,999	36	22	63.6	74	51	45.1
500,000 - 599,999	27	17	58.8	77	37	108.1
600,000 - 699,999	15	4	275.0	49	15	226.7
700,000 - 799,999	16	6	166.7	36	20	80.0
800,000 - 899,999	6	2	200.0	17	10	70.0
900,000 - 999,999	3	5	-40.0	9	13	-30.8
1,000,000 - 1,249,999	1	4	-75.0	4	3	33.3
1,250,000 - 1,499,999	1	3	-66.7	11	8	37.5
1,500,000 +	3	5	-40.0	34	37	-8.1
TOTALS	165	115	43.5	404	275	46.9

INVENTORY TREND

Listings Active at End of Month

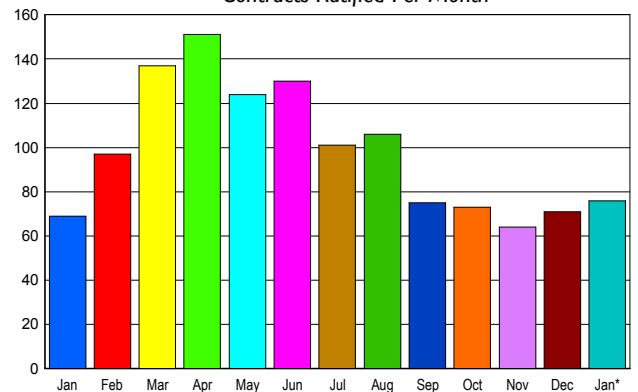


CONTRACTS

Price Range	New This Month			Year-To-Date		
	2006	2005	% Change	2006	2005	% Change
0 - 149,999	0	0	0.0	0	0	0.0
150,000 - 199,999	0	4	-100.0	0	4	-100.0
200,000 - 299,999	15	16	-6.3	15	16	-6.3
300,000 - 399,999	29	16	81.3	29	16	81.3
400,000 - 499,999	15	15	0.0	15	15	0.0
500,000 - 599,999	6	8	-25.0	6	8	-25.0
600,000 - 699,999	2	2	0.0	2	2	0.0
700,000 - 799,999	2	3	-33.3	2	3	-33.3
800,000 - 899,999	3	3	0.0	3	3	0.0
900,000 - 999,999	2	0	200.0	2	0	200.0
1,000,000 - 1,249,999	0	1	-100.0	0	1	-100.0
1,250,000 - 1,499,999	0	0	0.0	0	0	0.0
1,500,000 +	2	1	100.0	2	1	100.0
TOTALS	76	69	10.1	76	69	10.1

SALES TREND

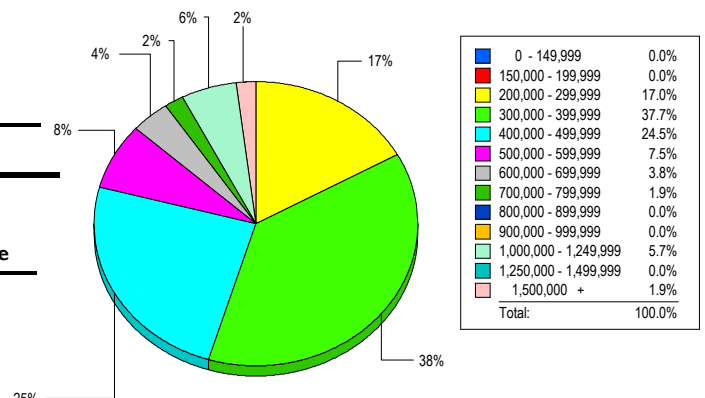
Contracts Ratified Per Month



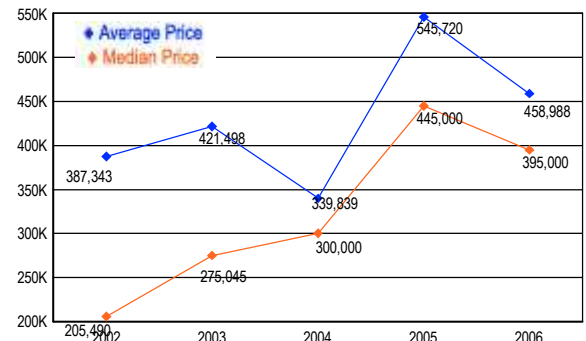
SETTLEMENTS

Price Range	New This Month			Year-to-Date		
	2006	2005	% Change	2006	2005	% Change
0 - 149,999	0	0	0.0	0	0	0.0
150,000 - 199,999	0	5	-100.0	0	5	-100.0
200,000 - 299,999	9	9	0.0	9	9	0.0
300,000 - 399,999	20	14	42.9	20	14	42.9
400,000 - 499,999	13	10	30.0	13	10	30.0
500,000 - 599,999	4	10	-60.0	4	10	-60.0
600,000 - 699,999	2	4	-50.0	2	4	-50.0
700,000 - 799,999	1	3	-66.7	1	3	-66.7
800,000 - 899,999	0	1	-100.0	0	1	-100.0
900,000 - 999,999	0	0	0.0	0	0	0.0
1,000,000 - 1,249,999	3	1	200.0	3	1	200.0
1,250,000 - 1,499,999	0	0	0.0	0	0	0.0
1,500,000 +	1	4	-75.0	1	4	-75.0
TOTALS	53	61	-13.1	53	61	-13.1

MARKET BY PRICE RANGE



AVERAGE & MEDIAN PRICE



DATA SOURCE: Metropolitan Regional Information Systems, Inc. (MRIS)

NOTES: Properties not listed through this Multiple Listing Service are not reflected. The term "sales" represents ratified purchase contracts. Current year information is preliminary and subject to revision. Current year-to-date contract information may not equal the sum of the monthly contract totals reported in