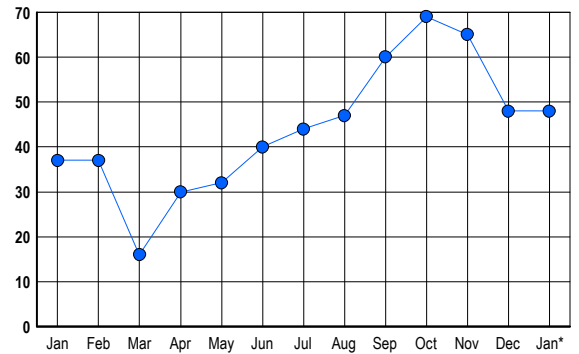


LISTINGS

Prices Range	New This Month			Total Actives		
	2006	2005	% Change	2006	2005	% Change
0 - 149,999	0	0	0.0	0	1	-100.0
150,000 - 199,999	0	0	0.0	0	2	-100.0
200,000 - 299,999	0	4	-100.0	0	4	-100.0
300,000 - 399,999	1	3	-66.7	0	6	-100.0
400,000 - 499,999	6	9	-33.3	7	9	-22.2
500,000 - 599,999	5	2	150.0	11	8	37.5
600,000 - 699,999	7	5	40.0	14	3	366.7
700,000 - 799,999	3	0	300.0	5	0	500.0
800,000 - 899,999	0	0	0.0	3	0	300.0
900,000 - 999,999	0	3	-100.0	1	2	-50.0
1,000,000 - 1,249,999	0	1	-100.0	2	2	0.0
1,250,000 - 1,499,999	1	0	100.0	5	0	500.0
1,500,000 +	0	1	-100.0	0	0	0.0
TOTALS	23	28	-17.9	48	37	29.7

INVENTORY TREND

Listings Active at End of Month

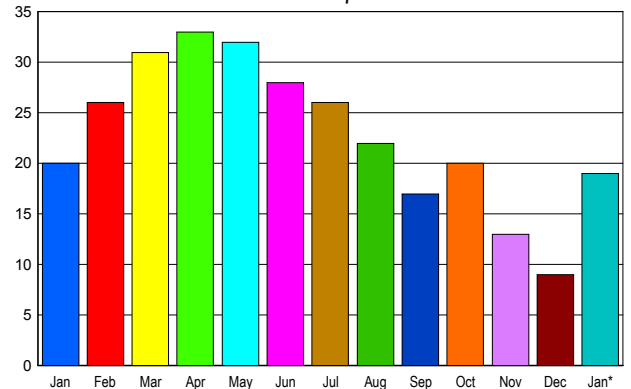


CONTRACTS

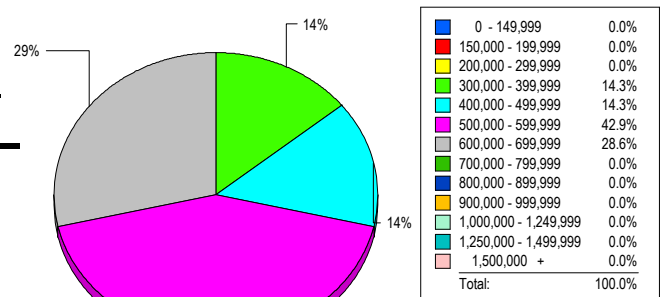
Price Range	New This Month			Year-To-Date		
	2006	2005	% Change	2006	2005	% Change
0 - 149,999	0	0	0.0	0	0	0.0
150,000 - 199,999	0	0	0.0	0	0	0.0
200,000 - 299,999	0	3	-100.0	0	3	-100.0
300,000 - 399,999	2	3	-33.3	2	3	-33.3
400,000 - 499,999	3	10	-70.0	3	10	-70.0
500,000 - 599,999	3	0	300.0	3	0	300.0
600,000 - 699,999	10	3	233.3	10	3	233.3
700,000 - 799,999	1	0	100.0	1	0	100.0
800,000 - 899,999	0	0	0.0	0	0	0.0
900,000 - 999,999	0	1	-100.0	0	1	-100.0
1,000,000 - 1,249,999	0	0	0.0	0	0	0.0
1,250,000 - 1,499,999	0	0	0.0	0	0	0.0
1,500,000 +	0	0	0.0	0	0	0.0
TOTALS	19	20	-5.0	19	20	-5.0

SALES TREND

Contracts Ratified Per Month



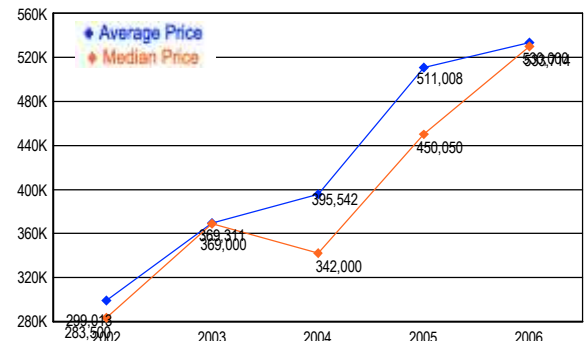
MARKET BY PRICE RANGE



SETTLEMENTS

Price Range	New This Month			Year-to-Date		
	2006	2005	% Change	2006	2005	% Change
0 - 149,999	0	0	0.0	0	0	0.0
150,000 - 199,999	0	0	0.0	0	0	0.0
200,000 - 299,999	0	1	-100.0	0	1	-100.0
300,000 - 399,999	1	6	-83.3	1	6	-83.3
400,000 - 499,999	1	6	-83.3	1	6	-83.3
500,000 - 599,999	3	3	0.0	3	3	0.0
600,000 - 699,999	2	2	0.0	2	2	0.0
700,000 - 799,999	0	0	0.0	0	0	0.0
800,000 - 899,999	0	0	0.0	0	0	0.0
900,000 - 999,999	0	1	-100.0	0	1	-100.0
1,000,000 - 1,249,999	0	1	-100.0	0	1	-100.0
1,250,000 - 1,499,999	0	0	0.0	0	0	0.0
1,500,000 +	0	0	0.0	0	0	0.0
TOTALS	7	20	-65.0	7	20	-65.0

AVERAGE & MEDIAN PRICE



DATA SOURCE: Metropolitan Regional Information Systems, Inc. (MRIS)

NOTES: Properties not listed through this Multiple Listing Service are not reflected. The term "sales" represents ratified purchase contracts. Current year information is preliminary and subject to revision. Current year- to- date contract information may not equal the sum of the monthly contract totals reported in