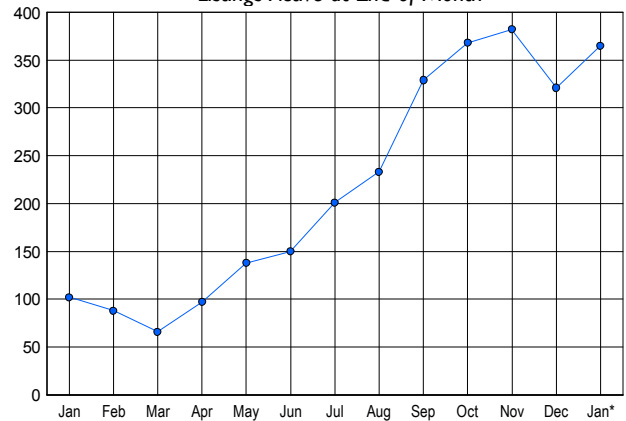


### LISTINGS

Price Range	New This Month			Total Actives		
	2006	2005	% Change	2006	2005	% Change
0 - 149,999	0	10	-100.0	3	33	-1000.0
150,000 - 199,999	7	16	-56.3	10	6	40.0
200,000 - 299,999	67	67	0.0	136	27	80.1
300,000 - 399,999	67	29	131.0	118	20	83.1
400,000 - 499,999	25	11	127.3	45	5	88.9
500,000 - 599,999	10	3	233.3	24	2	91.7
600,000 - 699,999	6	1	500.0	9	2	77.8
700,000 - 799,999	5	2	150.0	8	2	75.0
800,000 - 899,999	2	0	200.0	3	1	66.7
900,000 - 999,999	2	3	-33.3	4	3	25.0
1,000,000 - 1,249,999	1	0	100.0	2	0	100.0
1,250,000 - 1,499,999	0	0	0.0	0	0	0.0
1,500,000 +	1	0	100.0	3	1	66.7
<b>TOTALS</b>	<b>193</b>	<b>142</b>	<b>35.9</b>	<b>365</b>	<b>102</b>	<b>257.8</b>

### INVENTORY TREND

Listings Active at End of Month

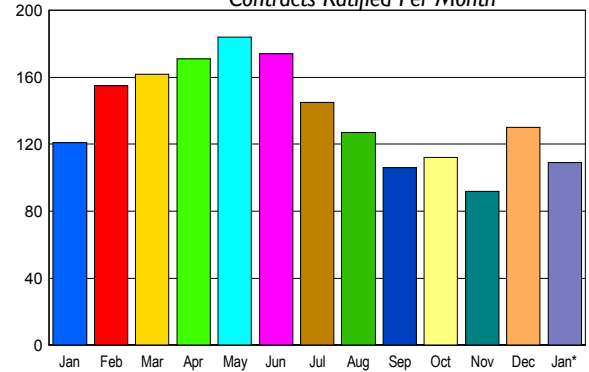


### CONTRACTS

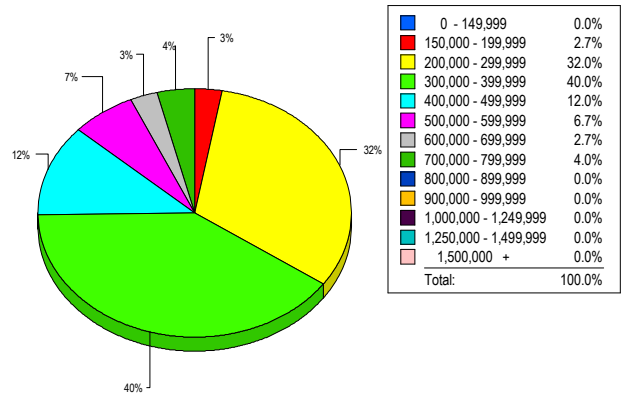
Price Range	New This Month			Year-To-Date		
	2006	2005	% Change	2006	2005	% Change
0 - 149,999	0	5	-100.0	0	5	-100.0
150,000 - 199,999	2	14	-85.7	2	14	-85.7
200,000 - 299,999	42	63	-33.3	42	63	-33.3
300,000 - 399,999	40	22	81.8	40	22	81.8
400,000 - 499,999	14	11	27.3	14	11	27.3
500,000 - 599,999	4	3	33.3	4	3	33.3
600,000 - 699,999	2	1	100.0	2	1	100.0
700,000 - 799,999	2	1	100.0	2	1	100.0
800,000 - 899,999	3	0	300.0	3	0	300.0
900,000 - 999,999	0	0	0.0	0	0	0.0
1,000,000 - 1,249,999	0	0	0.0	0	0	0.0
1,250,000 - 1,499,999	0	0	0.0	0	0	0.0
1,500,000 +	0	1	-100.0	0	1	-100.0
<b>TOTALS</b>	<b>109</b>	<b>121</b>	<b>-9.9</b>	<b>109</b>	<b>121</b>	<b>-9.9</b>

### SALES TREND

Contracts Ratified Per Month



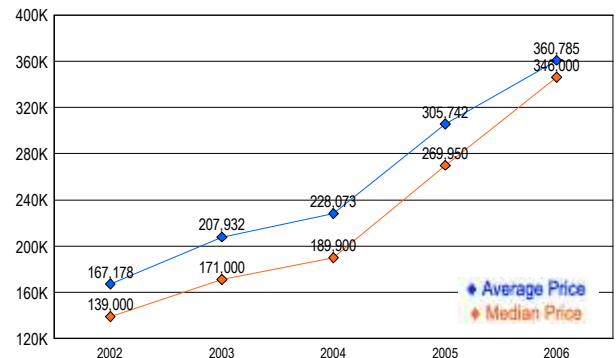
### MARKET BY PRICE RANGE



### SETTLEMENTS

Price Range	New This Month			Year-To-Date		
	2006	2005	% Change	2006	2005	% Change
0 - 149,999	0	4	-100.0	0	4	-100.0
150,000 - 199,999	2	10	-80.0	2	10	-80.0
200,000 - 299,999	24	52	-53.8	24	52	-53.8
300,000 - 399,999	30	18	66.7	30	18	66.7
400,000 - 499,999	9	11	-18.2	9	11	-18.2
500,000 - 599,999	5	3	66.7	5	3	66.7
600,000 - 699,999	2	0	200.0	2	0	-200.0
700,000 - 799,999	3	0	300.0	3	0	-300.0
800,000 - 899,999	0	0	0.0	0	0	0.0
900,000 - 999,999	0	0	0.0	0	0	0.0
1,000,000 - 1,249,999	0	1	-100.0	0	1	-100.0
1,250,000 - 1,499,999	0	1	-100.0	0	1	-100.0
1,500,000 +	0	0	0.0	0	0	0.0
<b>TOTALS</b>	<b>75</b>	<b>100</b>	<b>-25.0</b>	<b>75</b>	<b>100</b>	<b>-25.0</b>

### AVERAGE & MEDIAN PRICE



DATA SOURCE: Metropolitan Regional Information Systems, Inc. (MRIS)

NOTES: Properties not listed through this Multiple Listing Service are not reflected. The term "sales" represents ratified purchase contracts. Current year information is preliminary and subject to revision. Current year-to-date contract information may not equal the sum of the monthly contract totals reported in