

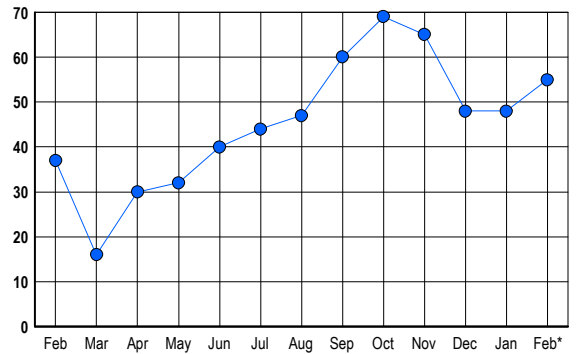


LISTINGS

Prices Range	New This Month			Total Actives		
	2006	2005	% Change	2006	2005	% Change
0 - 149,999	0	0	0.0	0	1	-100.0
150,000 - 199,999	0	0	0.0	0	2	-100.0
200,000 - 299,999	0	0	0.0	0	4	-100.0
300,000 - 399,999	1	3	-66.7	1	6	-83.3
400,000 - 499,999	4	10	-60.0	9	10	-10.0
500,000 - 599,999	11	7	57.1	14	5	180.0
600,000 - 699,999	6	2	200.0	14	5	180.0
700,000 - 799,999	2	2	0.0	5	0	500.0
800,000 - 899,999	3	0	300.0	1	0	100.0
900,000 - 999,999	1	1	0.0	1	2	-50.0
1,000,000 - 1,249,999	3	3	0.0	4	2	100.0
1,250,000 - 1,499,999	1	0	100.0	6	0	600.0
1,500,000 +	0	0	0.0	0	0	0.0
TOTALS	32	28	14.3	55	37	48.6

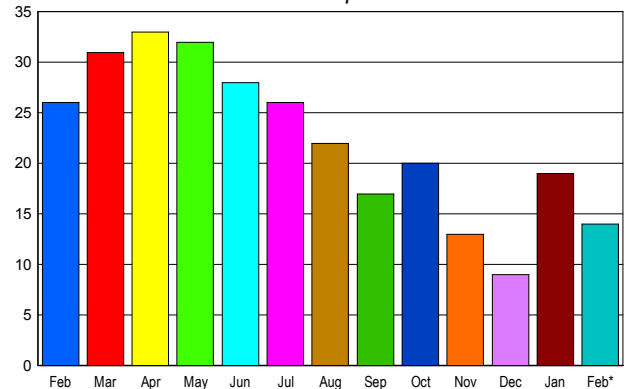
INVENTORY TREND

Listings Active at End of Month



SALES TREND

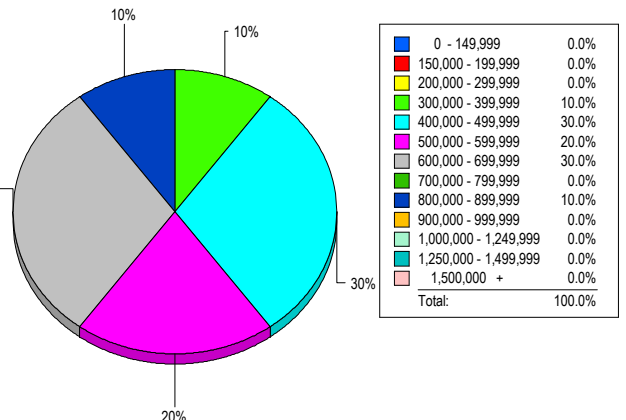
Contracts Ratified Per Month



CONTRACTS

Price Range	New This Month			Year-To-Date		
	2006	2005	% Change	2006	2005	% Change
0 - 149,999	0	0	0.0	0	0	0.0
150,000 - 199,999	0	0	0.0	0	0	0.0
200,000 - 299,999	0	0	0.0	0	3	-100.0
300,000 - 399,999	0	3	-100.0	2	6	-66.7
400,000 - 499,999	3	12	-75.0	6	22	-72.7
500,000 - 599,999	6	6	0.0	9	6	50.0
600,000 - 699,999	2	1	100.0	12	4	200.0
700,000 - 799,999	0	1	-100.0	1	1	0.0
800,000 - 899,999	2	0	200.0	2	0	200.0
900,000 - 999,999	0	2	-100.0	0	3	-100.0
1,000,000 - 1,249,999	0	1	-100.0	0	1	-100.0
1,250,000 - 1,499,999	1	0	100.0	1	0	100.0
1,500,000 +	0	0	0.0	0	0	0.0
TOTALS	14	26	-46.2	33	46	-28.3

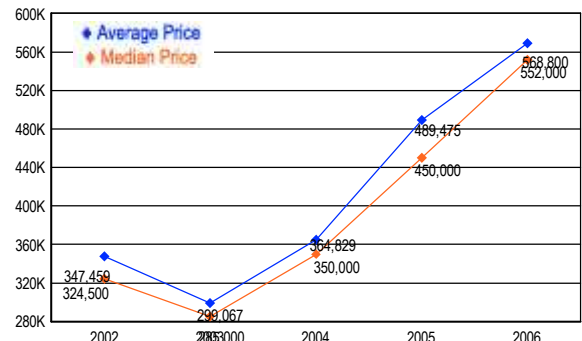
MARKET BY PRICE RANGE



SETTLEMENTS

Price Range	New This Month			Year-to-Date		
	2006	2005	% Change	2006	2005	% Change
0 - 149,999	0	0	0.0	0	0	0.0
150,000 - 199,999	0	0	0.0	0	0	0.0
200,000 - 299,999	0	1	-100.0	0	2	-100.0
300,000 - 399,999	1	2	-50.0	2	8	-75.0
400,000 - 499,999	3	10	-70.0	4	16	-75.0
500,000 - 599,999	2	3	-33.3	5	6	-16.7
600,000 - 699,999	3	2	50.0	5	4	25.0
700,000 - 799,999	0	0	0.0	0	0	0.0
800,000 - 899,999	1	0	100.0	1	0	100.0
900,000 - 999,999	0	1	-100.0	0	2	-100.0
1,000,000 - 1,249,999	0	0	0.0	0	1	-100.0
1,250,000 - 1,499,999	0	0	0.0	0	0	0.0
1,500,000 +	0	0	0.0	0	0	0.0
TOTALS	10	19	-47.4	17	39	-56.4

AVERAGE & MEDIAN PRICE



DATA SOURCE: Metropolitan Regional Information Systems, Inc. (MRIS)

NOTES: Properties not listed through this Multiple Listing Service are not reflected. The term "sales" represents ratified purchase contracts. Current year information is preliminary and subject to revision. Current year- to- date contract information may not equal the sum of the monthly contract totals reported in