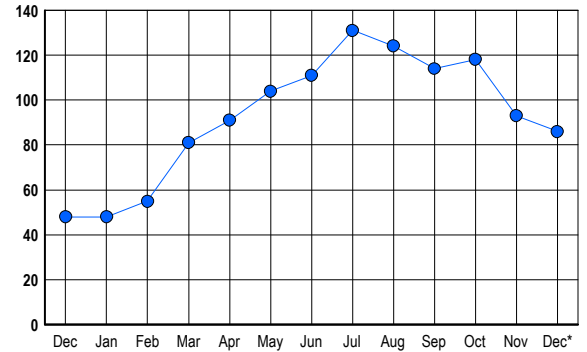


LISTINGS

Prices Range	New This Month			Total Actives		
	2006	2005	% Change	2006	2005	% Change
0 - 149,999	0	1	-100.0	0	0	0.0
150,000 - 199,999	0	0	0.0	0	0	0.0
200,000 - 299,999	0	0	0.0	0	0	0.0
300,000 - 399,999	3	0	300.0	5	2	150.0
400,000 - 499,999	11	3	266.7	28	7	300.0
500,000 - 599,999	1	4	-75.0	18	9	100.0
600,000 - 699,999	3	1	200.0	9	19	-52.6
700,000 - 799,999	0	3	-100.0	2	5	-60.0
800,000 - 899,999	1	0	100.0	1	1	0.0
900,000 - 999,999	2	0	200.0	4	0	400.0
1,000,000 - 1,249,999	2	1	100.0	11	2	450.0
1,250,000 - 1,499,999	0	1	-100.0	6	3	100.0
1,500,000 +	0	0	0.0	2	0	200.0
TOTALS	23	14	64.3	86	48	79.2

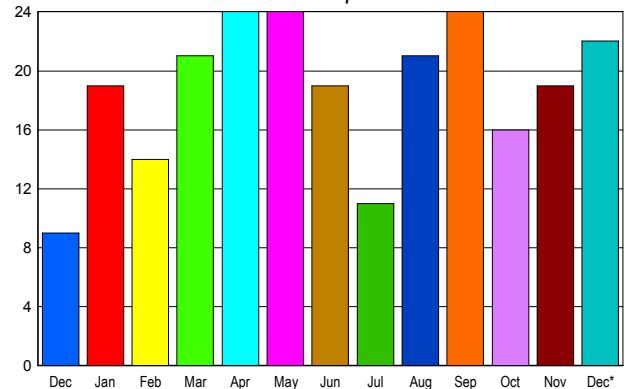
INVENTORY TREND

Listings Active at End of Month



SALES TREND

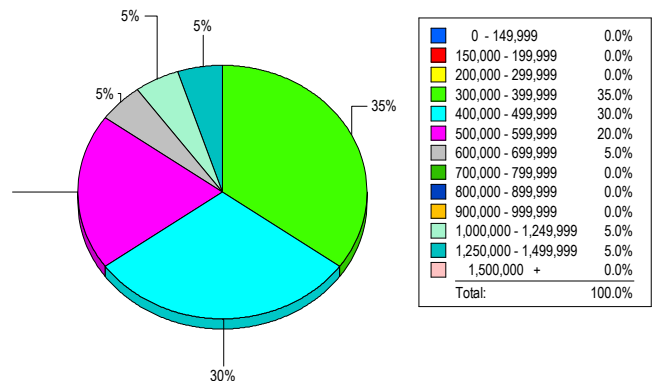
Contracts Ratified Per Month



CONTRACTS

Price Range	New This Month			Year-To-Date		
	2006	2005	% Change	2006	2005	% Change
0 - 149,999	0	0	0.0	0	0	0.0
150,000 - 199,999	0	0	0.0	1	0	100.0
200,000 - 299,999	0	0	0.0	1	5	-80.0
300,000 - 399,999	6	1	500.0	25	31	-19.4
400,000 - 499,999	7	1	600.0	73	90	-18.9
500,000 - 599,999	5	3	66.7	59	66	-10.6
600,000 - 699,999	3	1	200.0	40	45	-11.1
700,000 - 799,999	1	1	0.0	9	12	-25.0
800,000 - 899,999	0	0	0.0	4	8	-50.0
900,000 - 999,999	0	0	0.0	4	8	-50.0
1,000,000 - 1,249,999	0	1	-100.0	6	6	0.0
1,250,000 - 1,499,999	0	1	-100.0	6	3	100.0
1,500,000 +	0	0	0.0	0	0	0.0
TOTALS	22	9	144.4	228	274	-16.8

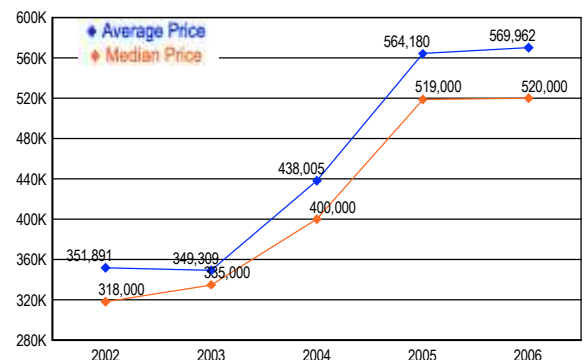
MARKET BY PRICE RANGE



SETTLEMENTS

Price Range	New This Month			Year-to-Date		
	2006	2005	% Change	2006	2005	% Change
0 - 149,999	0	0	0.0	0	0	0.0
150,000 - 199,999	0	0	0.0	1	0	100.0
200,000 - 299,999	0	0	0.0	1	4	-75.0
300,000 - 399,999	7	2	250.0	26	29	-10.3
400,000 - 499,999	6	3	100.0	71	89	-20.2
500,000 - 599,999	4	3	33.3	56	76	-26.3
600,000 - 699,999	1	2	-50.0	35	45	-22.2
700,000 - 799,999	0	2	-100.0	6	16	-62.5
800,000 - 899,999	0	0	0.0	7	7	0.0
900,000 - 999,999	0	1	-100.0	4	8	-50.0
1,000,000 - 1,249,999	1	0	100.0	6	9	-33.3
1,250,000 - 1,499,999	1	1	0.0	3	2	50.0
1,500,000 +	0	0	0.0	2	0	200.0
TOTALS	20	14	42.9	218	285	-23.5

AVERAGE & MEDIAN PRICE



DATA SOURCE: Metropolitan Regional Information Systems, Inc. (MRIS)

NOTES: Properties not listed through this Multiple Listing Service are not reflected. The term "sales" represents ratified purchase contracts. Current year information is preliminary and subject to revision. Current year-to-date contract information may not equal the sum of the monthly contract totals reported in