

# FAUQUIER COUNTY HOUSING REPORT

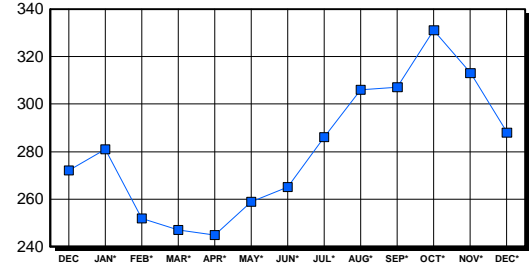
## Residential Market Report Single Family Homes December 2002

### LISTINGS

Price Range	New This Month			Total Active		
	2002	2001	% Change	2002	2001	% Change
0-149999	7	10	-30.0	10	16	-37.5
150000-299999	36	32	12.5	96	116	-17.2
300000-449999	20	11	81.8	92	67	37.3
450000-599999	3	10	-70.0	32	25	28.0
600000-749999	5	3	66.7	12	9	33.3
750000-999999	1	3	-66.7	13	11	18.2
1000000 & Over	2	1	100.0	33	28	17.9
<b>Grand Total:</b>	<b>74</b>	<b>70</b>	<b>5.7</b>	<b>288</b>	<b>272</b>	<b>5.9</b>

### INVENTORY TREND

Listings Active At End Of Month

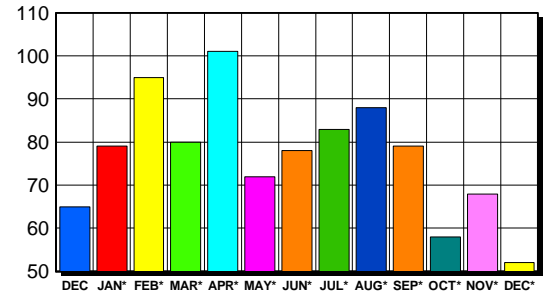


### CONTRACTS

Price Range	New This Month			Year-To-Date		
	2002	2001	% Change	2002	2001	% Change
0-149999	5	13	-61.5	92	228	-59.6
150000-299999	24	34	-29.4	495	532	-7.0
300000-449999	10	7	42.9	221	144	53.5
450000-599999	6	6	0.0	69	50	38.0
600000-749999	5	3	66.7	25	16	56.3
750000-999999	0	0	0.0	18	11	63.6
1000000 & Over	2	4	-50.0	13	19	-31.6
<b>Grand Total:</b>	<b>52</b>	<b>67</b>	<b>-22.4</b>	<b>933</b>	<b>1,000</b>	<b>-6.7</b>

### SALES TREND

Contracts Ratified Per Month



### SETTLEMENTS

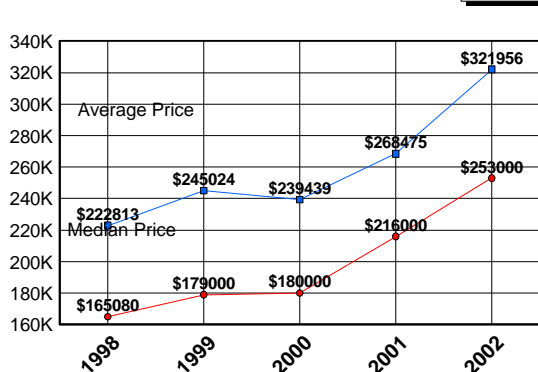
Price Range	New This Month			Year-To-Date		
	2002	2001	% Change	2002	2001	% Change
0-149999	7	9	-22.2	95	228	-58.3
150000-299999	24	44	-45.5	512	548	-6.6
300000-449999	19	13	46.2	219	139	57.6
450000-599999	5	5	0.0	53	42	26.2
600000-749999	2	0	200.0	26	14	85.7
750000-999999	5	1	400.0	17	8	112.5
1000000 & Over	1	2	-50.0	16	17	-5.9
<b>Grand Total:</b>	<b>63</b>	<b>74</b>	<b>-14.9</b>	<b>938</b>	<b>996</b>	<b>-5.8</b>

### DATA SOURCE

Metropolitan Regional Information System (MRIS)

NOTES: Properties not listed through this Multiple Listing Service are not reflected. The term "sales" represents ratified purchase contracts. Current year information is preliminary and subject to revision. Current year- to- date contract information may not equal the sum of the monthly contract totals reported in previous issues. Prices are not adjusted for inflation.

### AVERAGE & MEDIAN PRICE



### MARKET BY PRICE RANGE

