

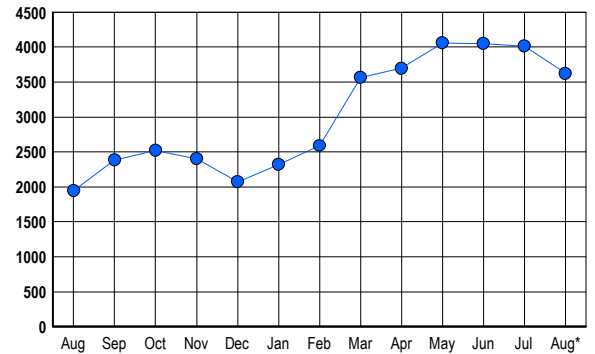


LISTINGS

Prices Range	New This Month			Total Actives		
	2006	2005	% Change	2006	2005	% Change
0 - 149,999	3	10	-70.0	4	8	-50.0
150,000 - 199,999	1	0	100.0	4	1	300.0
200,000 - 299,999	13	10	30.0	47	11	327.3
300,000 - 399,999	161	123	30.9	484	119	306.7
400,000 - 499,999	251	287	-12.5	894	372	140.3
500,000 - 599,999	147	230	-36.1	584	355	64.5
600,000 - 699,999	146	168	-13.1	530	247	114.6
700,000 - 799,999	75	137	-45.3	343	261	31.4
800,000 - 899,999	63	93	-32.3	267	214	24.8
900,000 - 999,999	29	65	-55.4	159	129	23.3
1,000,000 - 1,249,999	16	26	-38.5	120	99	21.2
1,250,000 - 1,499,999	12	22	-45.5	90	74	21.6
1,500,000 +	18	10	80.0	99	57	73.7
TOTALS	935	1181	-20.8	3625	1947	86.2

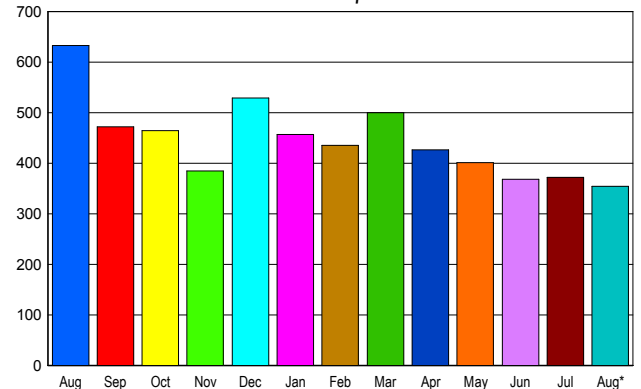
INVENTORY TREND

Listings Active at End of Month



SALES TREND

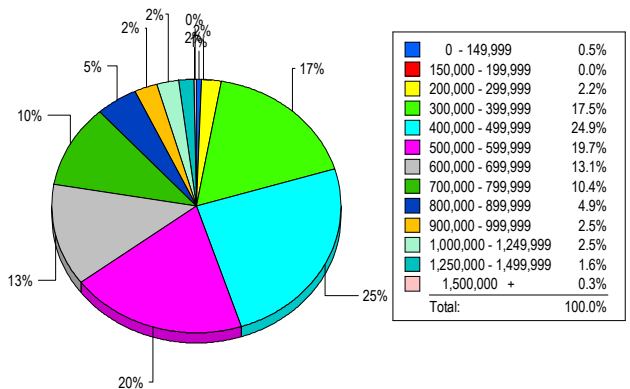
Contracts Ratified Per Month



CONTRACTS

Price Range	New This Month			Year-To-Date		
	2006	2005	% Change	2006	2005	% Change
0 - 149,999	0	0	0.0	3	5	-40.0
150,000 - 199,999	1	0	100.0	2	3	-33.3
200,000 - 299,999	8	12	-33.3	47	145	-67.6
300,000 - 399,999	91	88	3.4	603	876	-31.2
400,000 - 499,999	93	198	-53.0	938	1,639	-42.8
500,000 - 599,999	61	96	-36.5	563	870	-35.3
600,000 - 699,999	44	87	-49.4	469	692	-32.2
700,000 - 799,999	28	65	-56.9	288	455	-36.7
800,000 - 899,999	14	38	-63.2	167	226	-26.1
900,000 - 999,999	8	28	-71.4	80	115	-30.4
1,000,000 - 1,249,999	2	14	-85.7	57	83	-31.3
1,250,000 - 1,499,999	4	7	-42.9	29	56	-48.2
1,500,000 +	1	0	100.0	25	29	-13.8
TOTALS	355	633	-43.9	3271	5194	-37.0

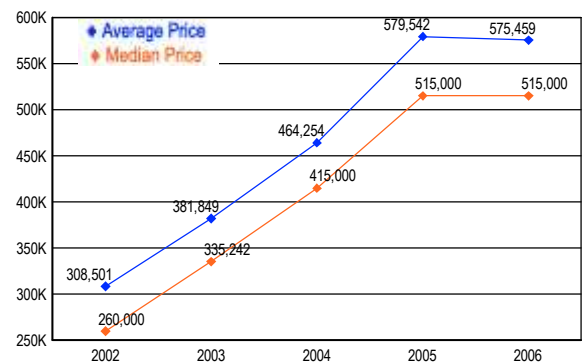
MARKET BY PRICE RANGE



SETTLEMENTS

Price Range	New This Month			Year-to-Date		
	2006	2005	% Change	2006	2005	% Change
0 - 149,999	2	1	100.0	4	6	-33.3
150,000 - 199,999	0	0	0.0	1	3	-66.7
200,000 - 299,999	8	11	-27.3	40	140	-71.4
300,000 - 399,999	64	74	-13.5	556	802	-30.7
400,000 - 499,999	91	204	-55.4	922	1,666	-44.7
500,000 - 599,999	72	128	-43.8	596	913	-34.7
600,000 - 699,999	48	107	-55.1	482	656	-26.5
700,000 - 799,999	38	81	-53.1	301	462	-34.8
800,000 - 899,999	18	42	-57.1	185	226	-18.1
900,000 - 999,999	9	16	-43.8	75	92	-18.5
1,000,000 - 1,249,999	9	17	-47.1	79	98	-19.4
1,250,000 - 1,499,999	6	4	50.0	29	49	-40.8
1,500,000 +	1	6	-83.3	30	28	7.1
TOTALS	366	691	-47.0	3300	5141	-35.8

AVERAGE & MEDIAN PRICE



DATA SOURCE: Metropolitan Regional Information Systems, Inc. (MRIS)

NOTES: Properties not listed through this Multiple Listing Service are not reflected. The term "sales" represents ratified purchase contracts. Current year information is preliminary and subject to revision. Current year-to-date contract information may not equal the sum of the monthly contract totals reported in