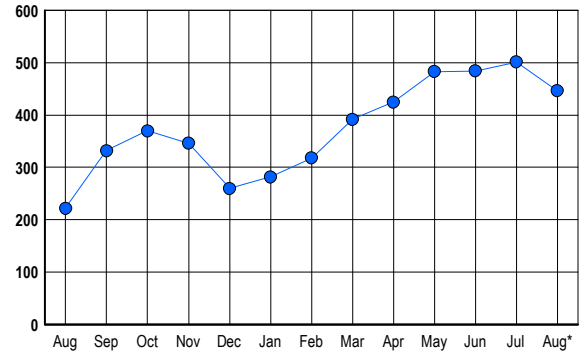


LISTINGS

Prices Range	New This Month			Total Actives		
	2006	2005	% Change	2006	2005	% Change
0 - 149,999	0	0	0.0	0	4	-100.0
150,000 - 199,999	0	0	0.0	0	0	0.0
200,000 - 299,999	3	3	0.0	8	0	800.0
300,000 - 399,999	6	13	-53.8	24	10	140.0
400,000 - 499,999	34	22	54.5	76	28	171.4
500,000 - 599,999	29	29	0.0	98	30	226.7
600,000 - 699,999	25	39	-35.9	78	49	59.2
700,000 - 799,999	23	18	27.8	56	33	69.7
800,000 - 899,999	10	12	-16.7	30	13	130.8
900,000 - 999,999	8	13	-38.5	16	18	-11.1
1,000,000 - 1,249,999	5	9	-44.4	20	15	33.3
1,250,000 - 1,499,999	3	1	200.0	19	7	171.4
1,500,000 +	3	6	-50.0	21	15	40.0
TOTALS	149	165	-9.7	446	222	100.9

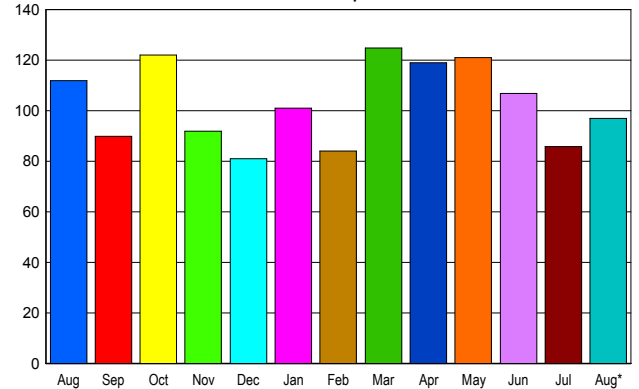
INVENTORY TREND

Listings Active at End of Month



SALES TREND

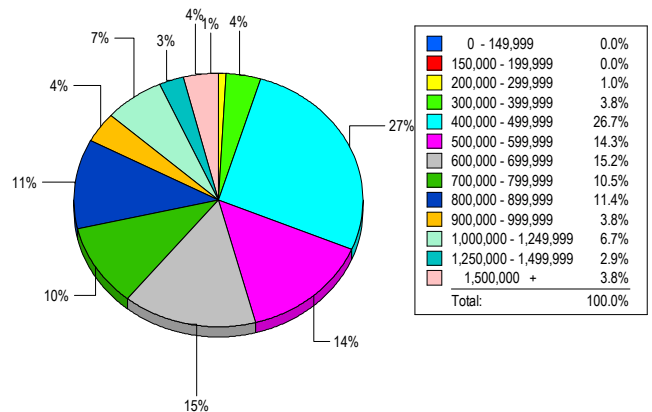
Contracts Ratified Per Month



CONTRACTS

Price Range	New This Month			Year-To-Date		
	2006	2005	% Change	2006	2005	% Change
0 - 149,999	0	1	-100.0	1	2	-50.0
150,000 - 199,999	0	0	0.0	0	0	0.0
200,000 - 299,999	1	3	-66.7	9	23	-60.9
300,000 - 399,999	6	9	-33.3	64	84	-23.8
400,000 - 499,999	25	20	25.0	160	201	-20.4
500,000 - 599,999	21	28	-25.0	177	254	-30.3
600,000 - 699,999	16	23	-30.4	150	189	-20.6
700,000 - 799,999	8	3	166.7	94	97	-3.1
800,000 - 899,999	9	10	-10.0	65	71	-8.5
900,000 - 999,999	4	4	0.0	38	34	11.8
1,000,000 - 1,249,999	3	4	-25.0	28	36	-22.2
1,250,000 - 1,499,999	3	3	0.0	25	24	4.2
1,500,000 +	1	4	-75.0	21	24	-12.5
TOTALS	97	112	-13.4	832	1039	-19.9

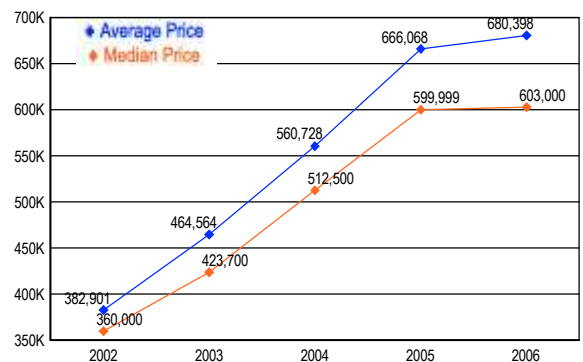
MARKET BY PRICE RANGE



SETTLEMENTS

Price Range	New This Month			Year-to-Date		
	2006	2005	% Change	2006	2005	% Change
0 - 149,999	0	1	-100.0	1	2	-50.0
150,000 - 199,999	0	0	0.0	0	2	-100.0
200,000 - 299,999	1	3	-66.7	7	27	-74.1
300,000 - 399,999	4	8	-50.0	62	68	-8.8
400,000 - 499,999	28	23	21.7	151	177	-14.7
500,000 - 599,999	15	34	-55.9	168	238	-29.4
600,000 - 699,999	16	30	-46.7	150	209	-28.2
700,000 - 799,999	11	11	0.0	94	96	-2.1
800,000 - 899,999	12	10	20.0	65	74	-12.2
900,000 - 999,999	4	2	100.0	30	37	-18.9
1,000,000 - 1,249,999	7	5	40.0	36	43	-16.3
1,250,000 - 1,499,999	3	0	300.0	17	16	6.3
1,500,000 +	4	4	0.0	22	23	-4.3
TOTALS	105	131	-19.8	803	1012	-20.7

AVERAGE & MEDIAN PRICE



DATA SOURCE: Metropolitan Regional Information Systems, Inc. (MRIS)

NOTES: Properties not listed through this Multiple Listing Service are not reflected. The term "sales" represents ratified purchase contracts. Current year information is preliminary and subject to revision. Current year-to-date contract information may not equal the sum of the monthly contract totals reported in