

ARLINGTON COUNTY Residential Market Report



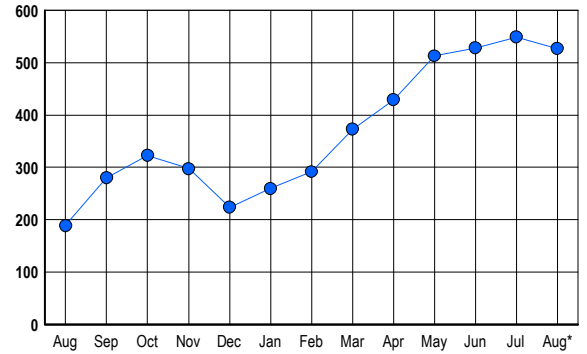
HOUSING REPORT Single Family Homes August 2006

LISTINGS

Prices Range	New This Month			Total Actives		
	2006	2005	% Change	2006	2005	% Change
0 - 149,999	0	0	0.0	0	2	-100.0
150,000 - 199,999	0	0	0.0	0	0	0.0
200,000 - 299,999	2	1	100.0	3	0	300.0
300,000 - 399,999	10	7	42.9	20	2	900.0
400,000 - 499,999	18	23	-21.7	40	15	166.7
500,000 - 599,999	42	20	110.0	90	19	373.7
600,000 - 699,999	41	26	57.7	83	41	102.4
700,000 - 799,999	27	18	50.0	87	23	278.3
800,000 - 899,999	17	6	183.3	56	8	600.0
900,000 - 999,999	12	5	140.0	28	13	115.4
1,000,000 - 1,249,999	7	8	-12.5	25	13	92.3
1,250,000 - 1,499,999	10	8	25.0	41	24	70.8
1,500,000 +	14	5	180.0	54	29	86.2
TOTALS	200	127	57.5	527	189	178.8

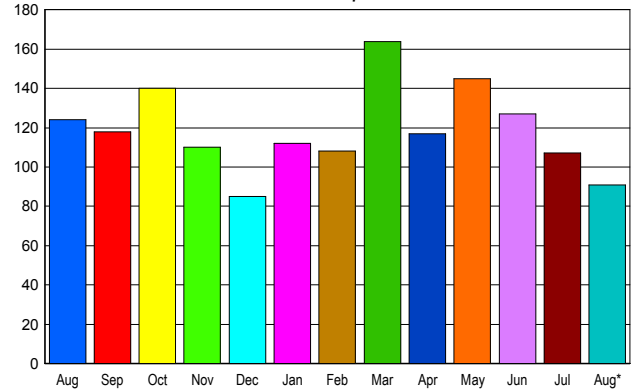
INVENTORY TREND

Listings Active at End of Month



SALES TREND

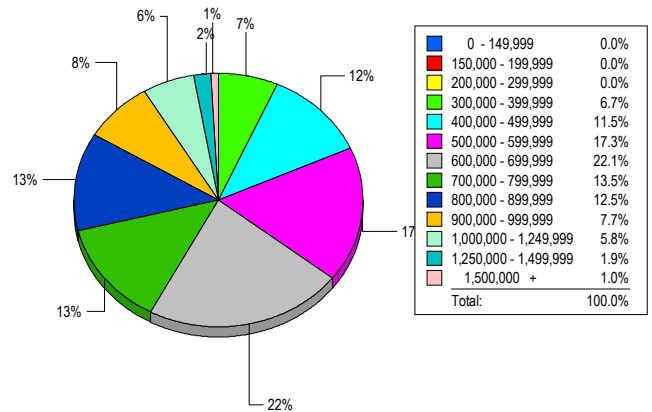
Contracts Ratified Per Month



CONTRACTS

Price Range	New This Month			Year-To-Date		
	2006	2005	% Change	2006	2005	% Change
0 - 149,999	0	0	0.0	0	0	0.0
150,000 - 199,999	0	0	0.0	0	0	0.0
200,000 - 299,999	2	1	100.0	7	6	16.7
300,000 - 399,999	5	7	-28.6	41	67	-38.8
400,000 - 499,999	14	20	-30.0	99	157	-36.9
500,000 - 599,999	19	24	-20.8	191	238	-19.7
600,000 - 699,999	21	28	-25.0	202	267	-24.3
700,000 - 799,999	6	16	-62.5	123	152	-19.1
800,000 - 899,999	10	8	25.0	98	83	18.1
900,000 - 999,999	3	8	-62.5	73	73	0.0
1,000,000 - 1,249,999	7	6	16.7	61	54	13.0
1,250,000 - 1,499,999	2	5	-60.0	34	51	-33.3
1,500,000 +	2	1	100.0	36	30	20.0
TOTALS	91	124	-26.6	965	1178	-18.1

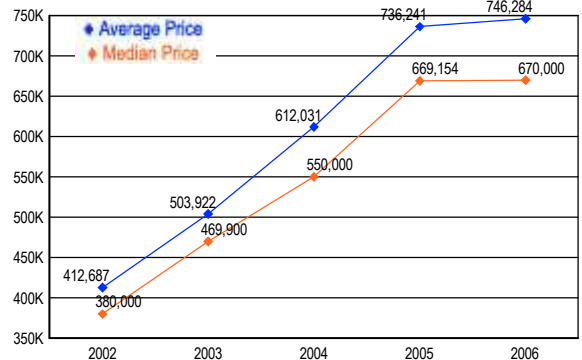
MARKET BY PRICE RANGE



SETTLEMENTS

Price Range	New This Month			Year-to-Date		
	2006	2005	% Change	2006	2005	% Change
0 - 149,999	0	0	0.0	0	0	0.0
150,000 - 199,999	0	0	0.0	0	0	0.0
200,000 - 299,999	0	1	-100.0	5	2	150.0
300,000 - 399,999	7	3	133.3	38	39	-2.6
400,000 - 499,999	12	15	-20.0	101	140	-27.9
500,000 - 599,999	18	23	-21.7	177	215	-17.7
600,000 - 699,999	23	33	-30.3	198	251	-21.1
700,000 - 799,999	14	24	-41.7	126	167	-24.6
800,000 - 899,999	13	10	30.0	103	101	2.0
900,000 - 999,999	8	8	0.0	71	71	0.0
1,000,000 - 1,249,999	6	9	-33.3	62	69	-10.1
1,250,000 - 1,499,999	2	6	-66.7	35	39	-10.3
1,500,000 +	1	3	-66.7	29	35	-17.1
TOTALS	104	135	-23.0	945	1129	-16.3

AVERAGE & MEDIAN PRICE



DATA SOURCE: Metropolitan Regional Information Systems, Inc. (MRIS)

NOTES: Properties not listed through this Multiple Listing Service are not reflected. The term "sales" represents ratified purchase contracts. Current year information is preliminary and subject to revision. Current year-to-date contract information may not equal the sum of the monthly contract totals reported in