

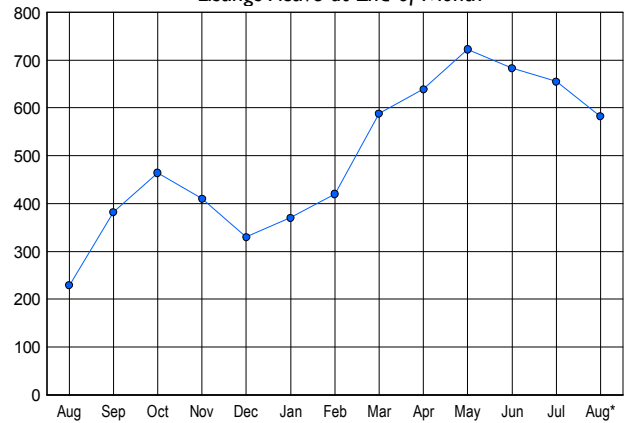


### LISTINGS

Price Range	New This Month			Total Actives		
	2006	2005	% Change	2006	2005	% Change
0 - 149,999	4	8	-50.0	2	10	-80.0
150,000 - 199,999	7	11	-36.4	22	7	214.3
200,000 - 299,999	52	43	20.9	120	42	185.7
300,000 - 399,999	67	66	1.5	187	62	201.6
400,000 - 499,999	42	68	-38.2	104	55	89.1
500,000 - 599,999	18	23	-21.7	62	18	244.4
600,000 - 699,999	11	14	-21.4	36	10	260.0
700,000 - 799,999	3	5	-40.0	7	9	-22.2
800,000 - 899,999	0	1	-100.0	6	6	0.0
900,000 - 999,999	0	1	-100.0	9	3	200.0
1,000,000 - 1,249,999	5	0	500.0	9	2	350.0
1,250,000 - 1,499,999	2	0	200.0	10	2	400.0
1,500,000 +	1	0	100.0	8	3	166.7
<b>TOTALS</b>	<b>212</b>	<b>240</b>	<b>-11.7</b>	<b>582</b>	<b>229</b>	<b>154.1</b>

### INVENTORY TREND

Listings Active at End of Month

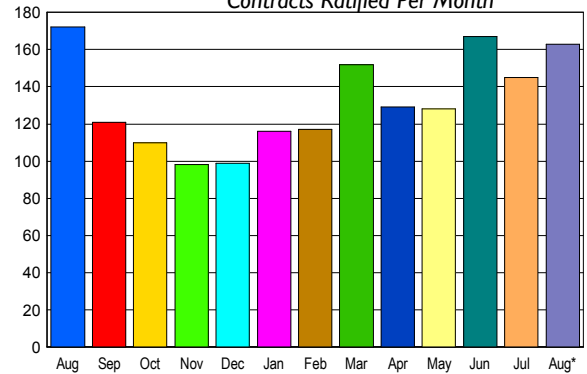


### CONTRACTS

Price Range	New This Month			Year-To-Date		
	2006	2005	% Change	2006	2005	% Change
0 - 149,999	2	3	-33.3	9	47	-80.9
150,000 - 199,999	8	5	60.0	53	79	-32.9
200,000 - 299,999	37	34	8.8	241	285	-15.4
300,000 - 399,999	58	46	26.1	395	362	9.1
400,000 - 499,999	42	48	-12.5	247	300	-17.7
500,000 - 599,999	10	18	-44.4	103	117	-12.0
600,000 - 699,999	2	11	-81.8	47	44	6.8
700,000 - 799,999	2	5	-60.0	8	17	-52.9
800,000 - 899,999	1	1	0.0	3	5	-40.0
900,000 - 999,999	0	0	0.0	5	3	66.7
1,000,000 - 1,249,999	0	0	0.0	0	2	-100.0
1,250,000 - 1,499,999	1	1	0.0	2	1	100.0
1,500,000 +	0	0	0.0	0	1	-100.0
<b>TOTALS</b>	<b>163</b>	<b>172</b>	<b>-5.2</b>	<b>1113</b>	<b>1263</b>	<b>-11.9</b>

### SALES TREND

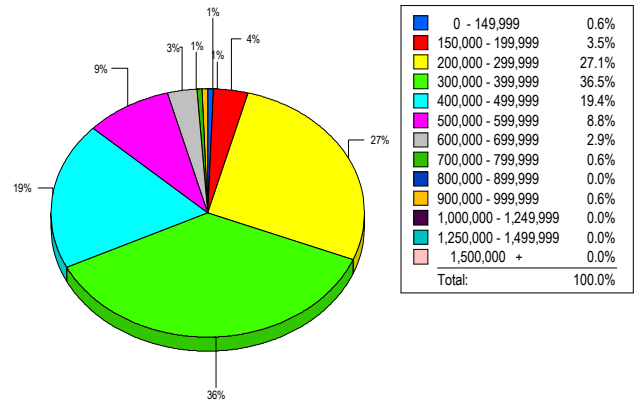
Contracts Ratified Per Month



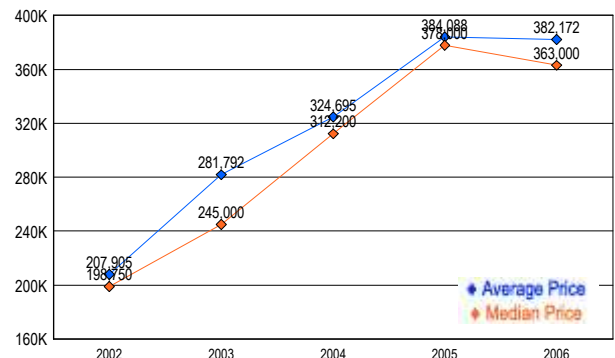
### SETTLEMENTS

Price Range	New This Month			Year-To-Date		
	2006	2005	% Change	2006	2005	% Change
0 - 149,999	1	1	0.0	10	44	-77.3
150,000 - 199,999	6	11	-45.5	49	71	-31.0
200,000 - 299,999	46	38	21.1	237	242	-2.1
300,000 - 399,999	62	52	19.2	369	341	8.2
400,000 - 499,999	33	55	-40.0	225	305	-26.2
500,000 - 599,999	15	31	-51.6	101	121	-16.5
600,000 - 699,999	5	13	-61.5	46	45	2.2
700,000 - 799,999	1	4	-75.0	9	17	-47.1
800,000 - 899,999	0	1	-100.0	3	5	-40.0
900,000 - 999,999	1	0	100.0	4	5	-20.0
1,000,000 - 1,249,999	0	0	0.0	0	1	-100.0
1,250,000 - 1,499,999	0	0	0.0	0	1	-100.0
1,500,000 +	0	0	0.0	2	0	-200.0
<b>TOTALS</b>	<b>170</b>	<b>206</b>	<b>-17.5</b>	<b>1055</b>	<b>1198</b>	<b>-11.9</b>

### MARKET BY PRICE RANGE



### AVERAGE & MEDIAN PRICE



DATA SOURCE: Metropolitan Regional Information Systems, Inc. (MRIS)

NOTES: Properties not listed through this Multiple Listing Service are not reflected. The term "sales" represents ratified purchase contracts. Current year information is preliminary and subject to revision. Current year-to-date contract information may not equal the sum of the monthly contract totals reported in