

ALEXANDRIA CITY HOUSING REPORT

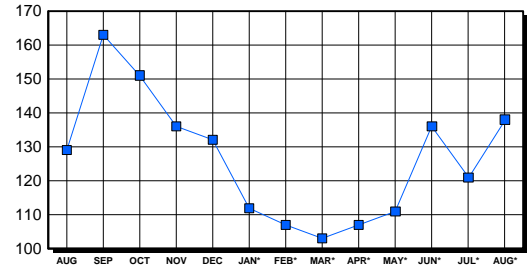
Residential Market Report Single Family Homes August 2002

LISTINGS

Price Range	New This Month			Total Active		
	2002	2001	% Change	2002	2001	% Change
0-149999	3	9	-66.7	5	5	0.0
150000-299999	39	45	-13.3	30	30	0.0
300000-449999	45	33	36.4	34	39	-12.8
450000-599999	25	13	92.3	25	23	8.7
600000-749999	15	7	114.3	14	10	40.0
750000-999999	8	4	100.0	20	10	100.0
1000000 & Over	8	3	166.7	10	12	-16.7
Grand Total:	143	114	25.4	138	129	7.0

INVENTORY TREND

Listings Active At End Of Month

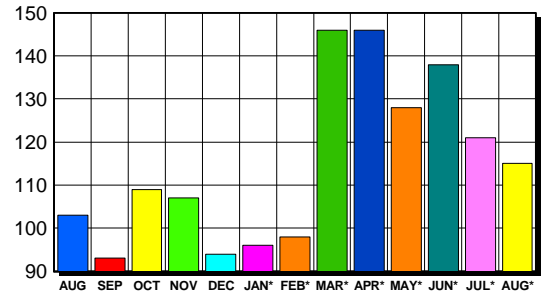


CONTRACTS

Price Range	New This Month			Year-To-Date		
	2002	2001	% Change	2002	2001	% Change
0-149999	3	10	-70.0	19	69	-72.5
150000-299999	31	37	-16.2	285	402	-29.1
300000-449999	44	36	22.2	380	297	27.9
450000-599999	19	8	137.5	161	103	56.3
600000-749999	10	6	66.7	59	37	59.5
750000-999999	3	4	-25.0	54	38	42.1
1000000 & Over	5	0	500.0	30	15	100.0
Grand Total:	115	101	13.9	988	961	2.8

SALES TREND

Contracts Ratified Per Month



SETTLEMENTS

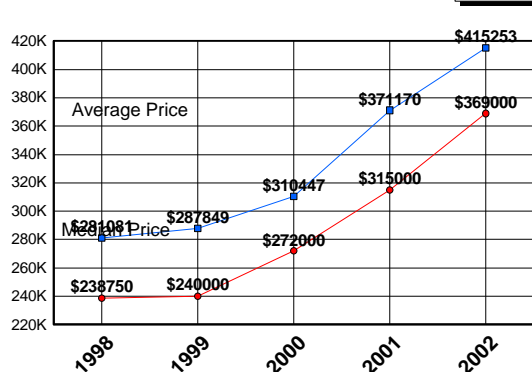
Price Range	New This Month			Year-To-Date		
	2002	2001	% Change	2002	2001	% Change
0-149999	1	8	-87.5	21	62	-66.1
150000-299999	27	52	-48.1	242	384	-37.0
300000-449999	41	45	-8.9	388	262	48.1
450000-599999	23	13	76.9	162	97	67.0
600000-749999	7	6	16.7	61	37	64.9
750000-999999	6	6	0.0	43	34	26.5
1000000 & Over	1	0	100.0	19	17	11.8
Grand Total:	106	130	-18.5	936	893	4.8

DATA SOURCE

Metropolitan Regional Information System (MRIS)

NOTES: Properties not listed through this Multiple Listing Service are not reflected. The term "sales" represents ratified purchase contracts. Current year information is preliminary and subject to revision. Current year- to- date contract information may not equal the sum of the monthly contract totals reported in previous issues. Prices are not adjusted for inflation.

AVERAGE & MEDIAN PRICE



MARKET BY PRICE RANGE

