

# ARLINGTON COUNTY HOUSING REPORT

## Residential Market Report

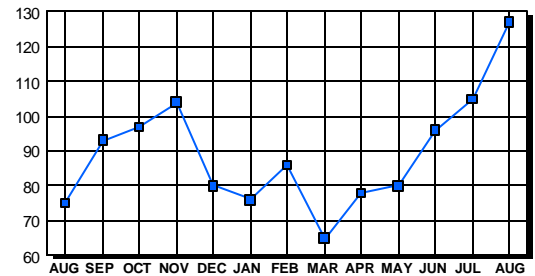
### Condo/Co-ops August 2002

#### LISTINGS

Price Range	New This Month			Total Active		
	2002	2001	% Change	2002	2001	% Change
0-49999	0	2	-200.0	0	0	0.0
50000-99999	20	39	-48.7	11	13	-15.4
100000-149999	25	35	-28.6	19	19	0.0
150000-199999	47	24	95.8	19	9	111.1
200000-299999	60	45	33.3	33	18	83.3
300000-399999	34	8	325.0	21	8	162.5
400000-499999	2	2	0.0	1	1	0.0
500000 & Over	16	4	300.0	23	7	228.6
<b>Grand Total:</b>	<b>204</b>	<b>159</b>	<b>28.3</b>	<b>127</b>	<b>75</b>	<b>69.3</b>

#### INVENTORY TREND

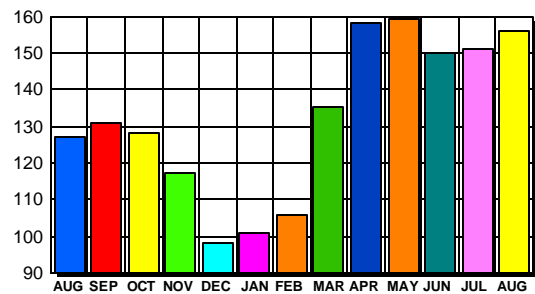
Listings Active At End Of Month



#### CONTRACTS

Price Range	New This Month			Year-To-Date		
	2002	2001	% Change	2002	2001	% Change
0-49999	0	2	-200.0	5	17	-70.6
50000-99999	14	29	-51.7	127	196	-35.2
100000-149999	28	31	-9.7	202	303	-33.3
150000-199999	41	17	141.2	251	206	21.8
200000-299999	39	36	8.3	352	264	33.3
300000-399999	26	6	333.3	131	47	178.7
400000-499999	3	2	50.0	22	14	57.1
500000 & Over	5	2	150.0	26	9	188.9
<b>Grand Total:</b>	<b>156</b>	<b>125</b>	<b>24.8</b>	<b>1,116</b>	<b>1,056</b>	<b>5.7</b>

#### SALES TREND



#### DATA SOURCE

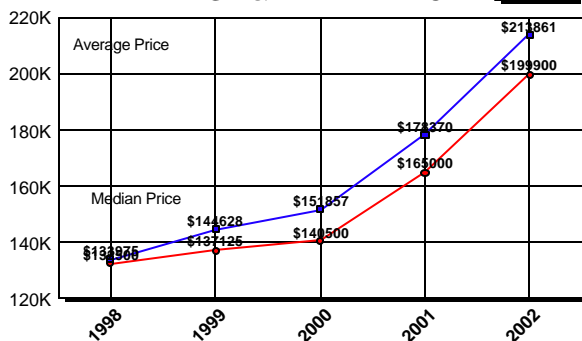
Metropolitan Regional Information System  
(MRIS)

NOTES: Properties not listed through this Multiple Listing Service are not reflected. The term "sales" represents ratified purchase contracts. Current year information is preliminary and subject to revision. Current year- to- date contract information may not equal the sum of the monthly contract totals reported in previous issues. Prices are not adjusted for inflation.

#### SETTLEMENTS

Price Range	New This Month			Year-To-Date		
	2002	2001	% Change	2002	2001	% Change
0-49999	0	4	-400.0	5	18	-72.2
50000-99999	12	25	-52.0	119	170	-30.0
100000-149999	19	38	-50.0	154	264	-41.7
150000-199999	41	21	95.2	237	200	18.5
200000-299999	47	33	42.4	343	262	30.9
300000-399999	17	10	70.0	134	60	123.3
400000-499999	6	2	200.0	23	13	76.9
500000 & Over	1	1	0.0	12	7	71.4
<b>Grand Total:</b>	<b>143</b>	<b>134</b>	<b>6.7</b>	<b>1,027</b>	<b>994</b>	<b>3.3</b>

#### AVERAGE & MEDIAN PRICE



#### MARKET BY PRICE RANGE

