

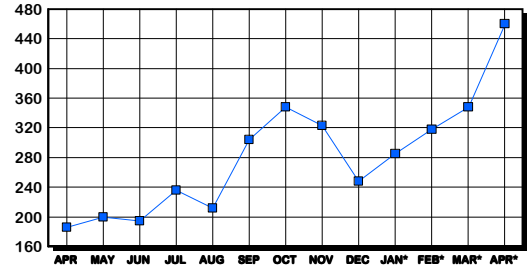
# ARLINGTON COUNTY HOUSING REPORT

## Residential Market Report Single Family Homes April 2006

### LISTINGS

Price Range	New This Month			Total Active		
	2006	2005	% Change	2006	2005	% Change
0-149999	0	0	0.0	3	3	0.0
150000-299999	2	0	0.0	15	11	100.0
300000-449999	13	23	-43.5	22	9	144.4
450000-599999	50	67	-25.4	74	26	184.6
600000-749999	75	77	-2.6	118	46	156.5
750000-999999	61	54	13.0	97	31	212.9
1000000 & Over	47	43	9.3	131	60	118.3
<b>Grand Total:</b>	<b>248</b>	<b>264</b>	<b>-6.1</b>	<b>460</b>	<b>186</b>	<b>147.3</b>

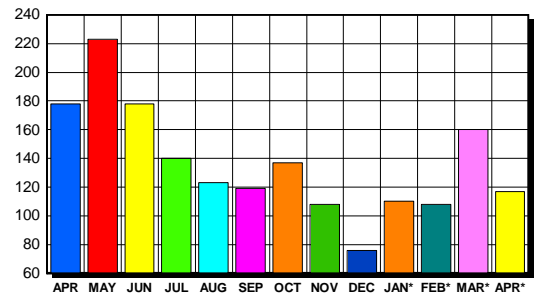
### INVENTORY TREND Listings Active At End Of Month



### CONTRACTS

Price Range	New This Month			Year-To-Date		
	2006	2005	% Change	2006	2005	% Change
0-149999	0	0	0.0	0	0	0.0
150000-299999	0	0	0.0	2	4	-50.0
300000-449999	5	18	-72.2	37	57	-35.1
450000-599999	23	43	-46.5	116	160	-27.5
600000-749999	34	53	-35.8	149	144	3.5
750000-999999	36	39	-7.7	118	98	20.4
1000000 & Over	19	18	5.6	73	64	14.1
<b>Grand Total:</b>	<b>117</b>	<b>171</b>	<b>-31.6</b>	<b>495</b>	<b>527</b>	<b>-6.1</b>

### SALES TREND Contracts Ratified Per Month



### SETTLEMENTS

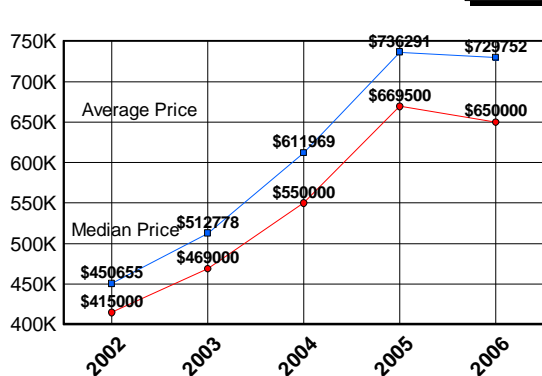
Price Range	New This Month			Year-To-Date		
	2006	2005	% Change	2006	2005	% Change
0-149999	0	0	0.0	0	0	0.0
150000-299999	0	3	-300.0	2	5	-60.0
300000-449999	11	7	57.1	35	50	-30.0
450000-599999	30	33	-9.1	112	142	-21.1
600000-749999	39	44	-11.4	133	97	37.1
750000-999999	22	22	0.0	83	73	13.7
1000000 & Over	14	16	-12.5	55	57	-3.5
<b>Grand Total:</b>	<b>116</b>	<b>125</b>	<b>-7.2</b>	<b>420</b>	<b>424</b>	<b>-0.9</b>

### DATA SOURCE

Metropolitan Regional Information System (MRIS)

NOTES: Properties not listed through this Multiple Listing Service are not reflected. The term "sales" represents ratified purchase contracts. Current year information is preliminary and subject to revision. Current year- to- date contract information may not equal the sum of the monthly contract totals reported in previous issues. Prices are not adjusted for inflation.

### AVERAGE & MEDIAN PRICE



### MARKET BY PRICE RANGE

