

# FAUQUIER COUNTY HOUSING REPORT

## Residential Market Report

### Condo/Co-ops

September

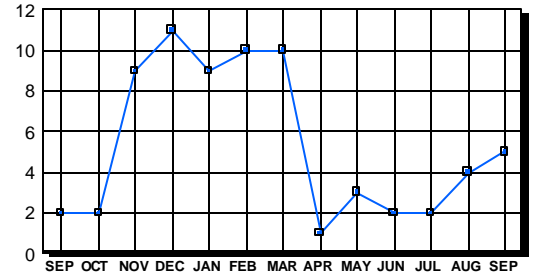
2004

#### LISTINGS

| Price Range         | New This Month |          |              | Total Active |          |              |
|---------------------|----------------|----------|--------------|--------------|----------|--------------|
|                     | 2004           | 2003     | % Change     | 2004         | 2003     | % Change     |
| 0-49999             | 0              | 0        | 0.0          | 0            | 0        | 0.0          |
| 50000-99999         | 1              | 0        | 100.0        | 1            | 0        | 100.0        |
| 100000-149999       | 0              | 1        | -100.0       | 1            | 1        | 0.0          |
| 150000-199999       | 2              | 0        | 200.0        | 2            | 0        | 200.0        |
| 200000-299999       | 0              | 0        | 0.0          | 0            | 1        | -100.0       |
| 300000-399999       | 1              | 0        | 100.0        | 1            | 0        | 100.0        |
| 400000-499999       | 0              | 0        | 0.0          | 0            | 0        | 0.0          |
| 500000 & Over       | 0              | 0        | 0.0          | 0            | 0        | 0.0          |
| <b>Grand Total:</b> | <b>4</b>       | <b>1</b> | <b>300.0</b> | <b>5</b>     | <b>2</b> | <b>150.0</b> |

#### INVENTORY TREND

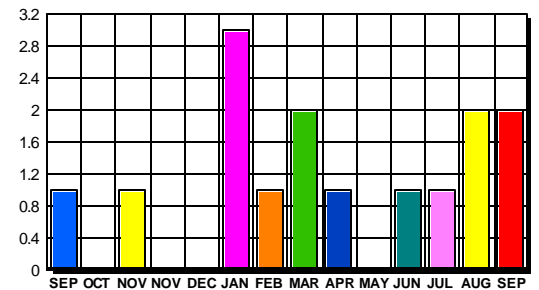
Listings Active At End Of Month



#### CONTRACTS

| Price Range         | New This Month |          |              | Year-To-Date |          |             |
|---------------------|----------------|----------|--------------|--------------|----------|-------------|
|                     | 2004           | 2003     | % Change     | 2004         | 2003     | % Change    |
| 0-49999             | 0              | 0        | 0.0          | 0            | 0        | 0.0         |
| 50000-99999         | 0              | 0        | 0.0          | 2            | 0        | 200.0       |
| 100000-149999       | 0              | 1        | -100.0       | 1            | 6        | -83.3       |
| 150000-199999       | 1              | 0        | 100.0        | 9            | 3        | 200.0       |
| 200000-299999       | 1              | 0        | 100.0        | 1            | 0        | 100.0       |
| 300000-399999       | 0              | 0        | 0.0          | 0            | 0        | 0.0         |
| 400000-499999       | 0              | 0        | 0.0          | 0            | 0        | 0.0         |
| 500000 & Over       | 0              | 0        | 0.0          | 0            | 0        | 0.0         |
| <b>Grand Total:</b> | <b>2</b>       | <b>1</b> | <b>100.0</b> | <b>13</b>    | <b>9</b> | <b>44.4</b> |

#### SALES TREND



#### SETTLEMENTS

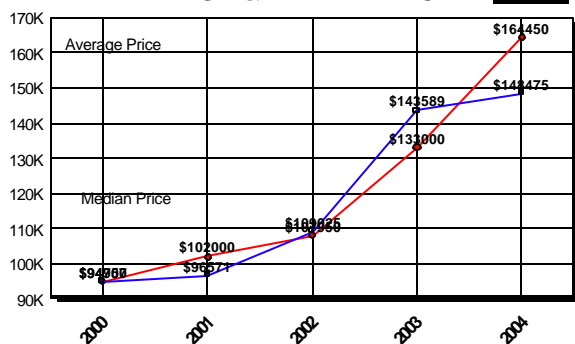
| Price Range         | New This Month |          |              | Year-To-Date |          |             |
|---------------------|----------------|----------|--------------|--------------|----------|-------------|
|                     | 2004           | 2003     | % Change     | 2004         | 2003     | % Change    |
| 0-49999             | 0              | 0        | 0.0          | 0            | 0        | 0.0         |
| 50000-99999         | 0              | 0        | 0.0          | 3            | 0        | 300.0       |
| 100000-149999       | 0              | 0        | 0.0          | 1            | 5        | -80.0       |
| 150000-199999       | 2              | 0        | 200.0        | 8            | 3        | 166.7       |
| 200000-299999       | 0              | 0        | 0.0          | 0            | 0        | 0.0         |
| 300000-399999       | 0              | 0        | 0.0          | 0            | 0        | 0.0         |
| 400000-499999       | 0              | 0        | 0.0          | 0            | 0        | 0.0         |
| 500000 & Over       | 0              | 0        | 0.0          | 0            | 0        | 0.0         |
| <b>Grand Total:</b> | <b>2</b>       | <b>0</b> | <b>200.0</b> | <b>12</b>    | <b>8</b> | <b>50.0</b> |

#### DATA SOURCE

Metropolitan Regional Information System (MRIS)

NOTES: Properties not listed through this Multiple Listing Service are not reflected. The term "sales" represents ratified purchase contracts. Current year information is preliminary and subject to revision. Current year-to-date contract information may not equal the sum of the monthly contract totals reported in previous issues. Prices are not adjusted for inflation.

#### AVERAGE & MEDIAN PRICE



#### MARKET BY PRICE RANGE

