

# FAIRFAX COUNTY HOUSING REPORT

## Residential Market Report

### Single Family Homes

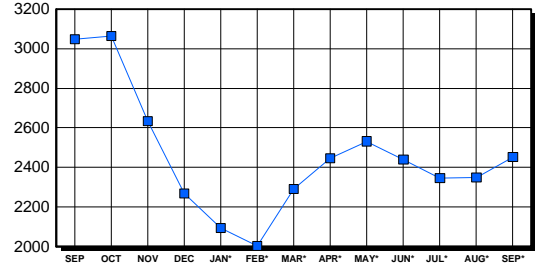
September 2003

#### LISTINGS

Price Range	New This Month			Total Active		
	2003	2002	% Change	2003	2002	% Change
0-149999	2	23	-91.3	60	68	-11.8
150000-299999	444	842	-47.3	407	837	-51.4
300000-449999	725	674	7.6	740	822	-10.0
450000-599999	356	292	21.9	494	483	2.3
600000-749999	131	142	-7.7	247	276	-10.5
750000-999999	103	109	-5.5	233	268	-13.1
1000000 & Over	82	77	6.5	271	294	-7.8
<b>Grand Total:</b>	<b>1,843</b>	<b>2,159</b>	<b>-14.6</b>	<b>2,452</b>	<b>3,048</b>	<b>-19.6</b>

#### INVENTORY TREND

Listings Active At End Of Month

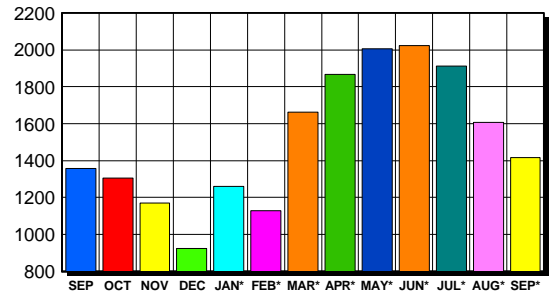


#### CONTRACTS

Price Range	New This Month			Year-To-Date		
	2003	2002	% Change	2003	2002	% Change
0-149999	3	15	-80.0	45	203	-77.8
150000-299999	460	644	-28.6	5,150	6,070	-15.2
300000-449999	579	398	45.5	5,757	4,219	36.5
450000-599999	201	157	28.0	2,163	1,624	33.2
600000-749999	67	47	42.6	823	566	45.4
750000-999999	66	45	46.7	574	417	37.6
1000000 & Over	39	18	116.7	373	212	75.9
<b>Grand Total:</b>	<b>1,415</b>	<b>1,324</b>	<b>6.9</b>	<b>14,885</b>	<b>13,311</b>	<b>11.8</b>

#### SALES TREND

Contracts Ratified Per Month



#### SETTLEMENTS

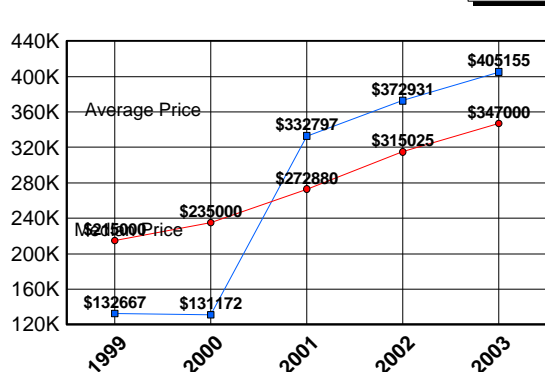
Price Range	New This Month			Year-To-Date		
	2003	2002	% Change	2003	2002	% Change
0-149999	2	8	-75.0	45	191	-76.4
150000-299999	454	609	-25.5	4,851	5,897	-17.7
300000-449999	592	415	42.7	5,503	4,051	35.8
450000-599999	244	163	49.7	2,015	1,534	31.4
600000-749999	96	44	118.2	796	544	46.3
750000-999999	55	39	41.0	490	364	34.6
1000000 & Over	30	16	87.5	341	184	85.3
<b>Grand Total:</b>	<b>1,473</b>	<b>1,294</b>	<b>13.8</b>	<b>14,041</b>	<b>12,765</b>	<b>10.0</b>

#### DATA SOURCE

Metropolitan Regional Information System (MRIS)

NOTES: Properties not listed through this Multiple Listing Service are not reflected. The term "sales" represents ratified purchase contracts. Current year information is preliminary and subject to revision. Current year- to- date contract information may not equal the sum of the monthly contract totals reported in previous issues. Prices are not adjusted for inflation.

#### AVERAGE & MEDIAN PRICE



#### MARKET BY PRICE RANGE

