

# FAIRFAX CITY HOUSING REPORT

## Residential Market Report

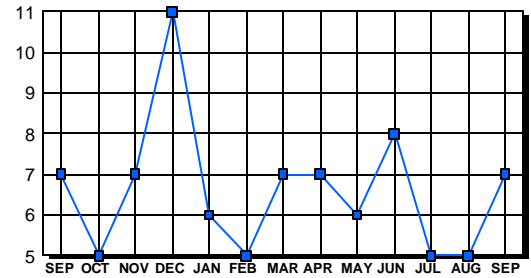
Condo/Co-ops  
September 2003

### LISTINGS

Price Range	New This Month			Total Active		
	2003	2002	% Change	2003	2002	% Change
0-49999	0	0	0.0	0	0	0.0
50000-99999	0	2	-200.0	3	4	-25.0
100000-149999	3	4	-25.0	4	2	100.0
150000-199999	1	0	100.0	0	0	0.0
200000-299999	0	0	0.0	0	1	-100.0
300000-399999	0	0	0.0	0	0	0.0
400000-499999	0	0	0.0	0	0	0.0
500000 & Over	0	0	0.0	0	0	0.0
<b>Grand Total:</b>	<b>4</b>	<b>6</b>	<b>-33.3</b>	<b>7</b>	<b>7</b>	<b>0.0</b>

### INVENTORY TREND

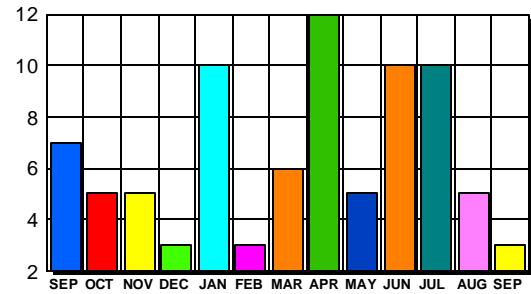
Listings Active At End Of Month



### CONTRACTS

Price Range	New This Month			Year-To-Date		
	2003	2002	% Change	2003	2002	% Change
0-49999	0	0	0.0	0	0	0.0
50000-99999	0	2	-200.0	8	21	-61.9
100000-149999	1	6	-83.3	38	41	-7.3
150000-199999	2	0	200.0	12	3	300.0
200000-299999	0	0	0.0	4	4	0.0
300000-399999	0	0	0.0	2	0	200.0
400000-499999	0	0	0.0	0	0	0.0
500000 & Over	0	0	0.0	0	0	0.0
<b>Grand Total:</b>	<b>3</b>	<b>8</b>	<b>-62.5</b>	<b>64</b>	<b>69</b>	<b>-7.2</b>

### SALES TREND



### DATA SOURCE

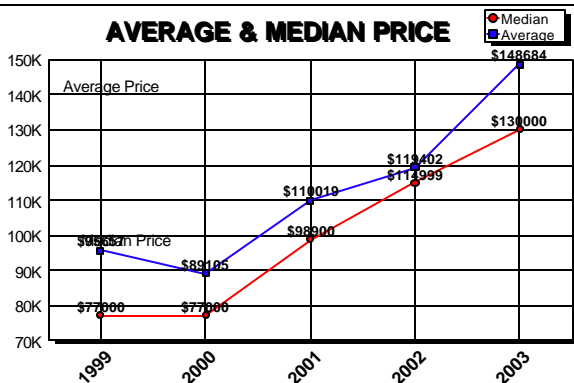
Metropolitan Regional Information System (MRIS)

NOTES: Properties not listed through this Multiple Listing Service are not reflected. The term "sales" represents ratified purchase contracts. Current year information is preliminary and subject to revision. Current year-to-date contract information may not equal the sum of the monthly contract totals reported in previous issues. Prices are not adjusted for inflation.

### SETTLEMENTS

Price Range	New This Month			Year-To-Date		
	2003	2002	% Change	2003	2002	% Change
0-49999	0	0	0.0	0	0	0.0
50000-99999	0	3	-300.0	8	22	-63.6
100000-149999	3	8	-62.5	39	37	5.4
150000-199999	1	1	0.0	11	4	175.0
200000-299999	0	0	0.0	6	3	100.0
300000-399999	0	0	0.0	2	0	200.0
400000-499999	0	0	0.0	1	0	100.0
500000 & Over	0	0	0.0	0	0	0.0
<b>Grand Total:</b>	<b>4</b>	<b>12</b>	<b>-66.7</b>	<b>67</b>	<b>66</b>	<b>1.5</b>

### AVERAGE & MEDIAN PRICE



### MARKET BY PRICE RANGE

