

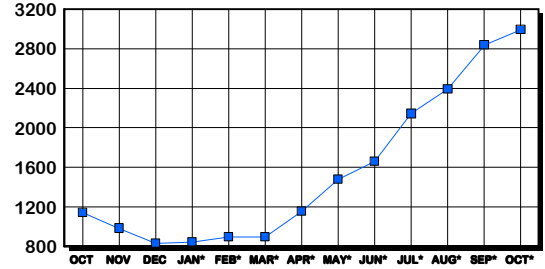
PRINCE WILLIAM COUNTY HOUSING REPORT

Residential Market Report Single Family Homes October 2005

LISTINGS

Price Range	New This Month			Total Active		
	2005	2004	% Change	2005	2004	% Change
0-149999	6	7	-14.3	78	74	5.4
150000-299999	108	377	-71.4	215	244	-11.9
300000-449999	697	427	63.2	1,177	350	236.3
450000-599999	382	210	81.9	776	294	163.9
600000-749999	226	65	247.7	481	103	367.0
750000-999999	85	16	431.3	205	65	215.4
1000000 & Over	20	4	400.0	58	17	241.2
Grand Total:	1,524	1,106	37.8	2,990	1,147	160.7

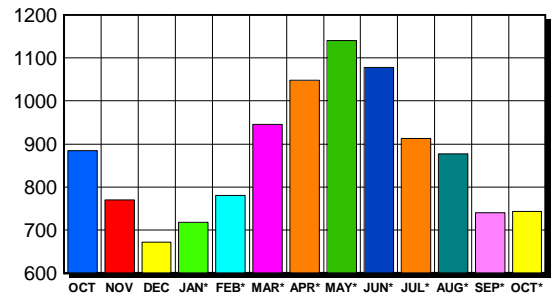
INVENTORY TREND
Listings Active At End Of Month



CONTRACTS

Price Range	New This Month			Year-To-Date		
	2005	2004	% Change	2005	2004	% Change
0-149999	0	1	-100.0	2	32	-93.8
150000-299999	91	370	-75.4	1,409	4,301	-67.2
300000-449999	403	368	9.5	4,568	2,887	58.2
450000-599999	162	127	27.6	1,964	1,086	80.8
600000-749999	68	27	151.9	767	234	227.8
750000-999999	17	7	142.9	224	91	146.2
1000000 & Over	2	2	0.0	52	13	300.0
Grand Total:	743	902	-17.6	8,986	8,644	4.0

SALES TREND
Contracts Ratified Per Month



SETTLEMENTS

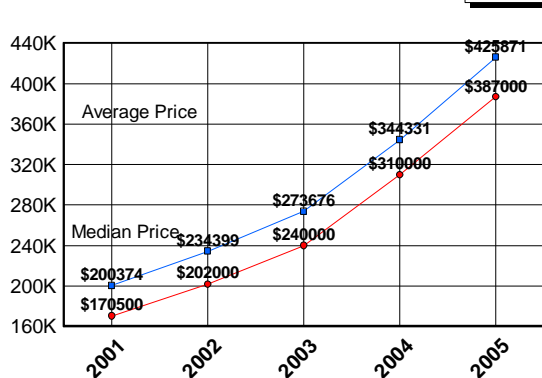
Price Range	New This Month			Year-To-Date		
	2005	2004	% Change	2005	2004	% Change
0-149999	0	0	0.0	4	36	-88.9
150000-299999	65	331	-80.4	1,275	4,214	-69.7
300000-449999	398	280	42.1	4,605	2,623	75.6
450000-599999	168	123	36.6	1,946	975	99.6
600000-749999	66	18	266.7	754	193	290.7
750000-999999	13	8	62.5	205	71	188.7
1000000 & Over	5	0	500.0	40	11	263.6
Grand Total:	715	760	-5.9	8,829	8,123	8.7

DATA SOURCE

Metropolitan Regional Information System (MRIS)

NOTES: Properties not listed through this Multiple Listing Service are not reflected. The term "sales" represents ratified purchase contracts. Current year information is preliminary and subject to revision. Current year-to-date contract information may not equal the sum of the monthly contract totals reported in previous issues. Prices are not adjusted for inflation.

AVERAGE & MEDIAN PRICE



MARKET BY PRICE RANGE

