

ALEXANDRIA CITY HOUSING REPORT

Residential Market Report

Condo/Co-ops

October

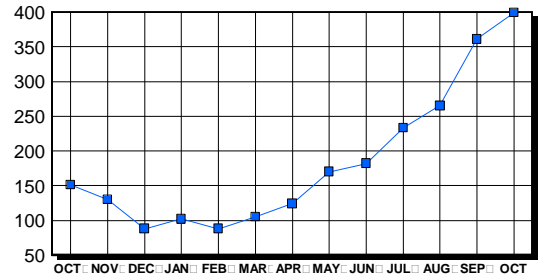
2005

LISTINGS

| Condo/Co-ops Price Range | New This Month | | | Total Active | | |
|-----------------------------|----------------|------------|-------------|--------------|------------|--------------|
| | 2005 | 2004 | % Change | 2005 | 2004 | % Change |
| 0-49999 | 1 | 1 | 0.0 | 3 | 3 | 0.0 |
| 50000-99999 | 0 | 0 | 0.0 | 13 | 14 | -7.1 |
| 100000-149999 | 0 | 2 | -200.0 | 14 | 15 | -6.7 |
| 150000-199999 | 2 | 35 | -94.3 | 8 | 15 | -46.7 |
| 200000-299999 | 71 | 83 | -14.5 | 110 | 52 | 111.5 |
| 300000-399999 | 85 | 44 | 93.2 | 131 | 17 | 670.6 |
| 400000-499999 | 33 | 19 | 73.7 | 53 | 17 | 211.8 |
| 500000 & Over | 28 | 12 | 133.3 | 67 | 18 | 272.2 |
| Grand Total: | 220 | 196 | 12.2 | 399 | 151 | 164.2 |

INVENTORY TREND

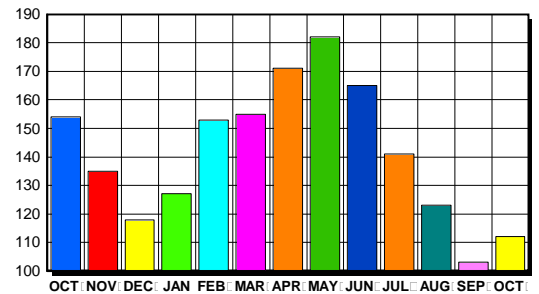
Listings Active At End Of Month



CONTRACTS

| Condo/Co-ops Price Range | New This Month | | | Year-To-Date | | |
|-----------------------------|----------------|------------|--------------|--------------|--------------|-------------|
| | 2005 | 2004 | % Change | 2005 | 2004 | % Change |
| 0-49999 | 0 | 0 | 0.0 | 0 | 0 | 0.0 |
| 50000-99999 | 0 | 0 | 0.0 | 0 | 6 | 0.0 |
| 100000-149999 | 0 | 1 | -100.0 | 10 | 126 | -92.1 |
| 150000-199999 | 3 | 35 | -91.4 | 93 | 397 | -76.6 |
| 200000-299999 | 42 | 65 | -35.4 | 593 | 596 | -0.5 |
| 300000-399999 | 36 | 37 | -2.7 | 447 | 271 | 64.9 |
| 400000-499999 | 14 | 8 | 75.0 | 154 | 126 | 22.2 |
| 500000 & Over | 17 | 8 | 112.5 | 135 | 66 | 104.5 |
| Grand Total: | 112 | 154 | -27.3 | 1,432 | 1,588 | -9.8 |

SALES TREND



SETTLEMENTS

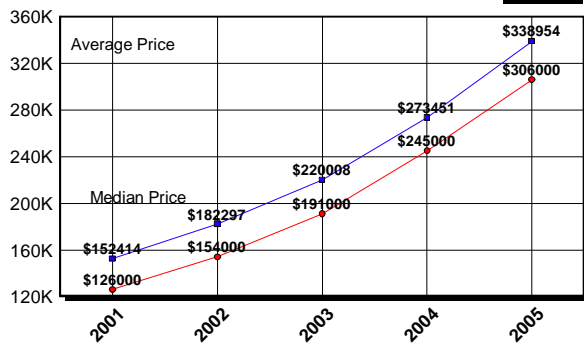
| Condo/Co-ops Price Range | New This Month | | | Year-To-Date | | |
|-----------------------------|----------------|------------|--------------|--------------|--------------|-------------|
| | 2005 | 2004 | % Change | 2005 | 2004 | % Change |
| 0-49999 | 0 | 0 | 0.0 | 0 | 1 | 0.0 |
| 50000-99999 | 0 | 0 | 0.0 | 0 | 8 | 0.0 |
| 100000-149999 | 0 | 1 | -100.0 | 11 | 119 | -90.8 |
| 150000-199999 | 3 | 25 | -88.0 | 74 | 375 | -80.3 |
| 200000-299999 | 33 | 61 | -45.9 | 566 | 538 | 5.2 |
| 300000-399999 | 30 | 33 | -9.1 | 451 | 270 | 67.0 |
| 400000-499999 | 10 | 13 | -23.1 | 168 | 127 | 32.3 |
| 500000 & Over | 13 | 5 | 160.0 | 132 | 63 | 109.5 |
| Grand Total: | 89 | 138 | -35.5 | 1,402 | 1,501 | -6.6 |

DATA SOURCE

Metropolitan Regional Information System (MRIS)

NOTES: Properties not listed through this Multiple Listing Service are not reflected. The term "sales" represents ratified purchase contracts. Current year information is preliminary and subject to revision. Current year-to-date contract information may not equal the sum of the monthly contract totals reported in previous issues. Prices are not adjusted for inflation.

AVERAGE & MEDIAN PRICE



MARKET BY PRICE RANGE

