

# ALEXANDRIA CITY HOUSING REPORT

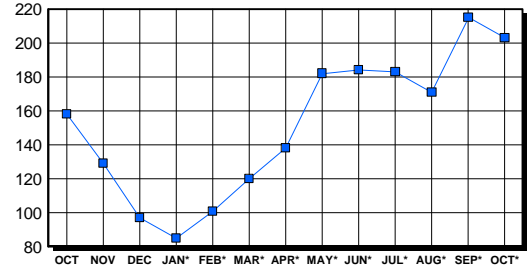
## Residential Market Report Single Family Homes October 2004

### LISTINGS

Price Range	New This Month			Total Active		
	2004	2003	% Change	2004	2003	% Change
0-149999	1	0	0.0	9	5	100.0
150000-299999	8	18	-55.6	15	24	-37.5
300000-449999	36	43	-16.3	24	31	-22.6
450000-599999	46	55	-16.4	46	39	17.9
600000-749999	32	22	45.5	31	22	40.9
750000-999999	19	19	0.0	29	14	107.1
1000000 & Over	14	13	7.7	49	23	113.0
<b>Grand Total:</b>	<b>156</b>	<b>170</b>	<b>-8.2</b>	<b>203</b>	<b>158</b>	<b>28.5</b>

### INVENTORY TREND

Listings Active At End Of Month

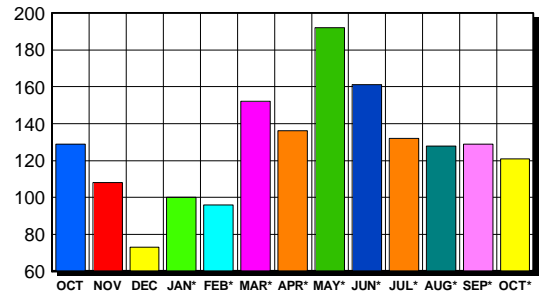


### CONTRACTS

Price Range	New This Month			Year-To-Date		
	2004	2003	% Change	2004	2003	% Change
0-149999	0	1	-100.0	3	5	-40.0
150000-299999	8	16	-50.0	88	230	-61.7
300000-449999	39	47	-17.0	385	581	-33.7
450000-599999	34	34	0.0	475	312	52.2
600000-749999	22	15	46.7	227	131	73.3
750000-999999	10	14	-28.6	116	74	56.8
1000000 & Over	8	4	100.0	53	42	26.2
<b>Grand Total:</b>	<b>121</b>	<b>131</b>	<b>-7.6</b>	<b>1,347</b>	<b>1,375</b>	<b>-2.0</b>

### SALES TREND

Contracts Ratified Per Month



### SETTLEMENTS

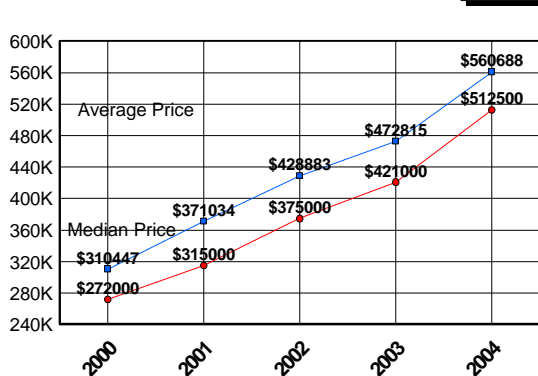
Price Range	New This Month			Year-To-Date		
	2004	2003	% Change	2004	2003	% Change
0-149999	0	0	0.0	3	4	-25.0
150000-299999	7	23	-69.6	79	233	-66.1
300000-449999	27	41	-34.1	350	568	-38.4
450000-599999	34	25	36.0	443	292	51.7
600000-749999	17	14	21.4	230	117	96.6
750000-999999	8	9	-11.1	114	65	75.4
1000000 & Over	6	1	500.0	51	42	21.4
<b>Grand Total:</b>	<b>99</b>	<b>113</b>	<b>-12.4</b>	<b>1,270</b>	<b>1,321</b>	<b>-3.9</b>

### DATA SOURCE

Metropolitan Regional Information System (MRIS)

NOTES: Properties not listed through this Multiple Listing Service are not reflected. The term "sales" represents ratified purchase contracts. Current year information is preliminary and subject to revision. Current year- to- date contract information may not equal the sum of the monthly contract totals reported in previous issues. Prices are not adjusted for inflation.

### AVERAGE & MEDIAN PRICE



### MARKET BY PRICE RANGE

