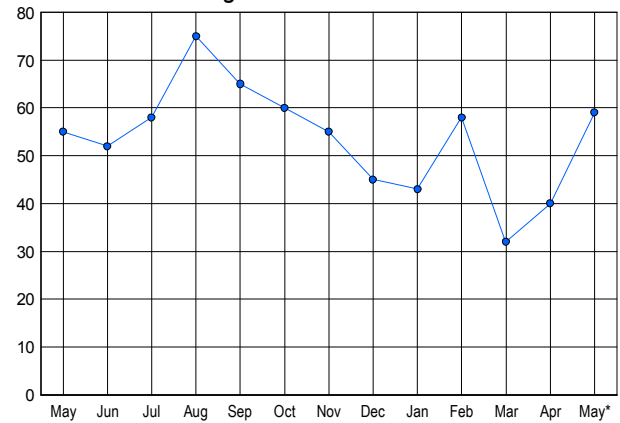


LISTINGS

Price Range	New This Month			Total Actives		
	2005	2004	% Change	2005	2004	% Change
0 - 149,999	3	13	-76.9	0	25	-2500.0
150,000 - 199,999	7	41	-82.9	6	9	-50.0
200,000 - 299,999	60	25	140.0	21	11	47.6
300,000 - 399,999	21	3	600.0	16	7	56.3
400,000 - 499,999	8	2	300.0	9	2	77.8
500,000 - 599,999	4	1	300.0	3	1	66.7
600,000 - 699,999	0	0	0.0	1	0	100.0
700,000 - 799,999	0	0	0.0	3	0	100.0
800,000 - 899,999	0	0	0.0	0	0	0.0
900,000 - 999,999	0	0	0.0	0	0	0.0
1,000,000 - 1,249,999	0	0	0.0	0	0	0.0
1,250,000 - 1,499,999	0	0	0.0	0	0	0.0
1,500,000 +	0	0	0.0	0	0	0.0
TOTALS	103	85	21.2	59	55	7.3

INVENTORY TREND

Lists Active at End of Month

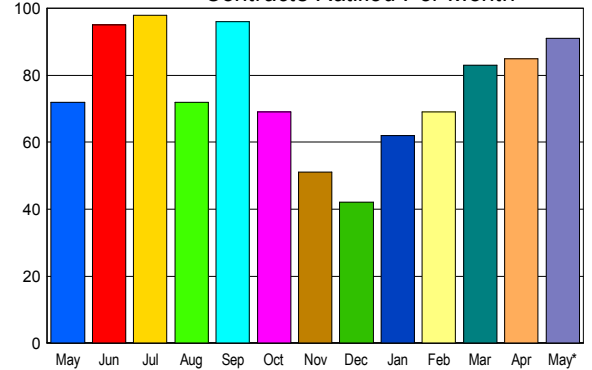


CONTRACTS

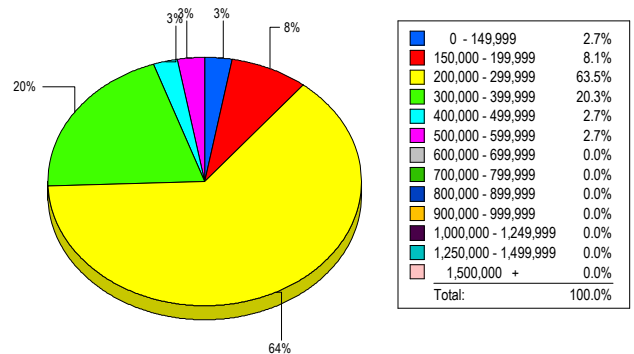
Price Range	New This Month			Year-To-Date		
	2005	2004	% Change	2005	2004	% Change
0 - 149,999	2	11	-81.8	19	89	-78.7
150,000 - 199,999	6	38	-84.2	44	165	-73.3
200,000 - 299,999	61	20	205.0	249	74	236.5
300,000 - 399,999	17	2	750.0	43	13	230.8
400,000 - 499,999	2	1	100.0	12	3	300.0
500,000 - 599,999	2	0	200.0	4	0	400.0
600,000 - 699,999	1	0	100.0	3	0	300.0
700,000 - 799,999	0	0	0.0	0	0	0.0
800,000 - 899,999	0	0	0.0	0	0	0.0
900,000 - 999,999	0	0	0.0	0	0	0.0
1,000,000 - 1,249,999	0	0	0.0	0	0	0.0
1,250,000 - 1,499,999	0	0	0.0	0	0	0.0
1,500,000 +	0	0	0.0	0	0	0.0
TOTALS	91	72	26.4	374	344	8.7

SALES TREND

Contracts Ratified Per Month



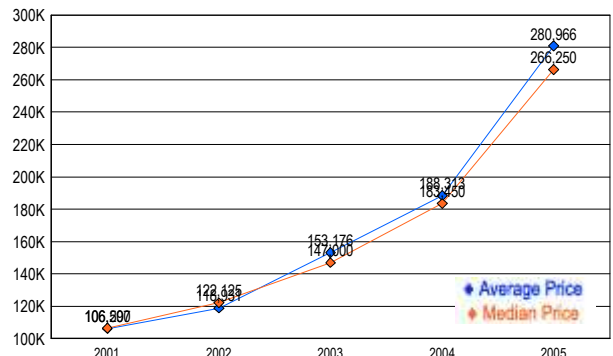
MARKET BY PRICE RANGE



SETTLEMENTS

Price Range	New This Month			Year-To-Date		
	2005	2004	% Change	2005	2004	% Change
0 - 149,999	2	11	-81.8	14	86	-514.3
150,000 - 199,999	6	39	-84.6	46	148	-221.7
200,000 - 299,999	47	19	147.4	213	67	68.5
300,000 - 399,999	15	3	400.0	36	10	72.2
400,000 - 499,999	2	0	200.0	7	0	100.0
500,000 - 599,999	2	0	200.0	2	0	100.0
600,000 - 699,999	0	0	0.0	0	0	0.0
700,000 - 799,999	0	0	0.0	0	0	0.0
800,000 - 899,999	0	0	0.0	0	0	0.0
900,000 - 999,999	0	0	0.0	0	0	0.0
1,000,000 - 1,249,999	0	0	0.0	0	0	0.0
1,250,000 - 1,499,999	0	0	0.0	0	0	0.0
1,500,000 +	0	0	0.0	0	0	0.0
TOTALS	74	72	2.8	318	311	2.3

AVERAGE & MEDIAN PRICE



DATA SOURCE: Metropolitan Regional Information Systems, Inc. (MRIS)

NOTES: Properties not listed through this Multiple Listing Service are not reflected. The term "sales" represents ratified purchase contracts. Current year information is preliminary and subject to revision. Current year-to-date contract information may not equal the sum of the monthly contract totals reported in