

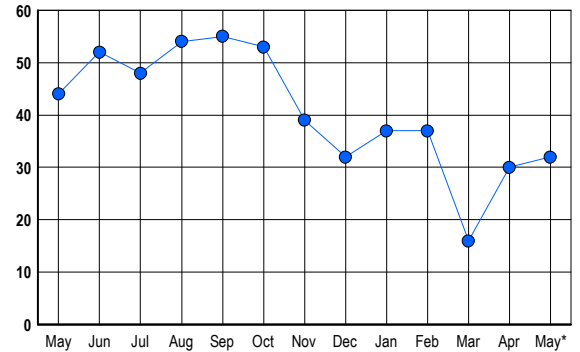


LISTINGS

Prices Range	New This Month			Total Actives		
	2005	2004	% Change	2005	2004	% Change
0 - 149,999	0	1	-100.0	0	1	-100.0
150,000 - 199,999	0	0	0.0	0	2	-100.0
200,000 - 299,999	0	2	-100.0	0	4	-100.0
300,000 - 399,999	3	8	-62.5	0	10	-100.0
400,000 - 499,999	10	10	0.0	6	14	-57.1
500,000 - 599,999	8	4	100.0	4	5	-20.0
600,000 - 699,999	14	4	250.0	9	4	125.0
700,000 - 799,999	4	1	300.0	4	1	300.0
800,000 - 899,999	2	0	200.0	1	0	100.0
900,000 - 999,999	1	0	100.0	3	3	0.0
1,000,000 - 1,249,999	1	0	100.0	1	0	100.0
1,250,000 - 1,499,999	0	0	0.0	4	0	400.0
1,500,000 +	0	0	0.0	0	0	0.0
TOTALS	43	30	43.3	32	44	-27.3

INVENTORY TREND

Listings Active at End of Month

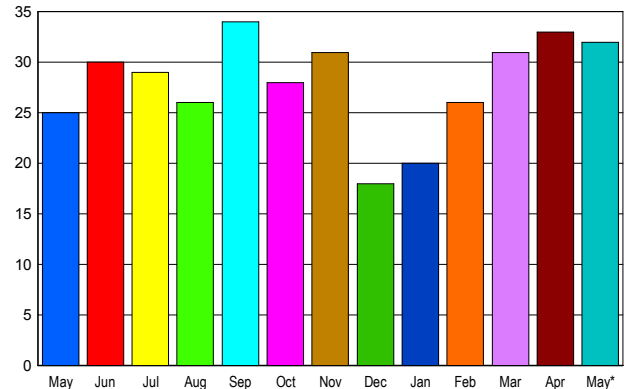


CONTRACTS

Price Range	New This Month			Year-To-Date		
	2005	2004	% Change	2005	2004	% Change
0 - 149,999	0	0	0.0	0	0	0.0
150,000 - 199,999	0	0	0.0	0	0	0.0
200,000 - 299,999	0	2	-100.0	3	34	-91.2
300,000 - 399,999	2	8	-75.0	17	54	-68.5
400,000 - 499,999	6	10	-40.0	49	34	44.1
500,000 - 599,999	10	4	150.0	34	14	142.9
600,000 - 699,999	8	0	800.0	22	6	266.7
700,000 - 799,999	1	0	100.0	4	2	100.0
800,000 - 899,999	2	1	100.0	4	3	33.3
900,000 - 999,999	2	0	200.0	4	0	400.0
1,000,000 - 1,249,999	1	0	100.0	2	2	0.0
1,250,000 - 1,499,999	0	0	0.0	0	0	0.0
1,500,000 +	0	0	0.0	0	0	0.0
TOTALS	32	25	28.0	139	149	-6.7

SALES TREND

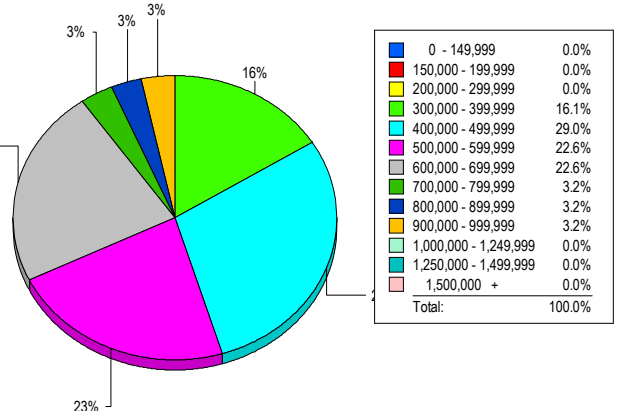
Contracts Ratified Per Month



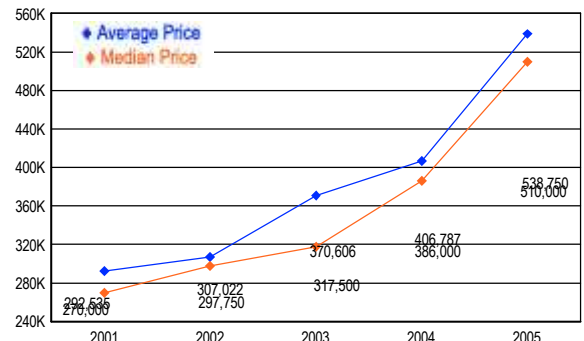
SETTLEMENTS

Price Range	New This Month			Year-to-Date		
	2005	2004	% Change	2005	2004	% Change
0 - 149,999	0	0	0.0	0	0	0.0
150,000 - 199,999	0	0	0.0	0	0	0.0
200,000 - 299,999	0	11	-100.0	2	36	-94.4
300,000 - 399,999	5	5	0.0	16	46	-65.2
400,000 - 499,999	9	10	-10.0	42	28	50.0
500,000 - 599,999	7	3	133.3	32	10	220.0
600,000 - 699,999	7	2	250.0	16	6	166.7
700,000 - 799,999	1	0	100.0	3	3	0.0
800,000 - 899,999	1	0	100.0	2	0	200.0
900,000 - 999,999	1	1	0.0	4	2	100.0
1,000,000 - 1,249,999	0	0	0.0	2	0	200.0
1,250,000 - 1,499,999	0	0	0.0	0	0	0.0
1,500,000 +	0	0	0.0	0	0	0.0
TOTALS	31	32	-3.1	119	131	-9.2

MARKET BY PRICE RANGE



AVERAGE & MEDIAN PRICE



DATA SOURCE: Metropolitan Regional Information Systems, Inc. (MRIS)

NOTES: Properties not listed through this Multiple Listing Service are not reflected. The term "sales" represents ratified purchase contracts. Current year information is preliminary and subject to revision. Current year-to-date contract information may not equal the sum of the monthly contract totals reported in