

# LOUDOUN COUNTY HOUSING REPORT

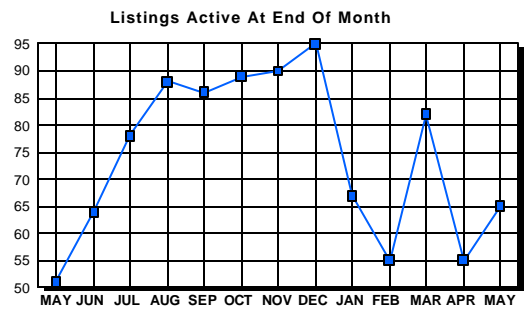
## Residential Market Report

### Condo/Co-ops May 2003

#### LISTINGS

Price Range	New This Month			Total Active		
	2003	2002	% Change	2003	2002	% Change
0-49999	0	0	0.0	0	0	0.0
50000-99999	6	10	-40.0	5	7	-28.6
100000-149999	20	28	-28.6	12	13	-7.7
150000-199999	51	36	41.7	21	12	75.0
200000-299999	18	9	100.0	17	13	30.8
300000-399999	4	1	300.0	8	3	166.7
400000-499999	0	0	0.0	0	2	-200.0
500000 & Over	0	0	0.0	2	1	100.0
<b>Grand Total:</b>	<b>99</b>	<b>84</b>	<b>17.9</b>	<b>65</b>	<b>51</b>	<b>27.5</b>

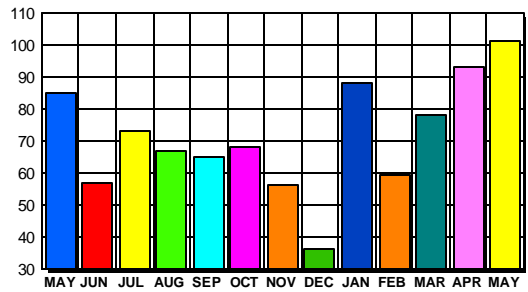
#### INVENTORY TREND



#### CONTRACTS

Price Range	New This Month			Year-To-Date		
	2003	2002	% Change	2003	2002	% Change
0-49999	0	0	0.0	0	0	0.0
50000-99999	6	10	-40.0	17	58	-70.7
100000-149999	23	28	-17.9	145	140	3.6
150000-199999	51	36	41.7	186	107	73.8
200000-299999	17	9	88.9	58	28	107.1
300000-399999	4	1	300.0	11	2	450.0
400000-499999	0	0	0.0	2	2	0.0
500000 & Over	0	0	0.0	0	1	0.0
<b>Grand Total:</b>	<b>101</b>	<b>84</b>	<b>20.2</b>	<b>419</b>	<b>338</b>	<b>24.0</b>

#### SALES TREND



#### DATA SOURCE

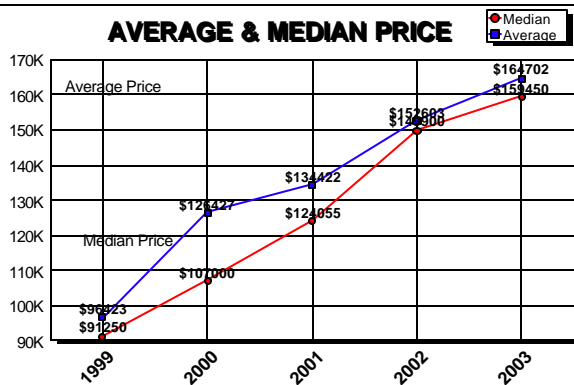
Metropolitan Regional Information System  
(MRIS)

NOTES: Properties not listed through this Multiple Listing Service are not reflected. The term "sales" represents ratified purchase contracts. Current year information is preliminary and subject to revision. Current year- to- date contract information may not equal the sum of the monthly contract totals reported in previous issues. Prices are not adjusted for inflation.

#### SETTLEMENTS

Price Range	New This Month			Year-To-Date		
	2003	2002	% Change	2003	2002	% Change
0-49999	0	0	0.0	0	0	0.0
50000-99999	0	3	-300.0	13	54	-75.9
100000-149999	27	32	-15.6	126	120	5.0
150000-199999	36	18	100.0	149	81	84.0
200000-299999	17	5	240.0	41	20	105.0
300000-399999	1	0	100.0	7	1	600.0
400000-499999	1	0	100.0	2	1	100.0
500000 & Over	0	0	0.0	0	1	0.0
<b>Grand Total:</b>	<b>82</b>	<b>58</b>	<b>41.4</b>	<b>338</b>	<b>278</b>	<b>21.6</b>

#### AVERAGE & MEDIAN PRICE



#### MARKET BY PRICE RANGE

