

# FAUQUIER COUNTY HOUSING REPORT

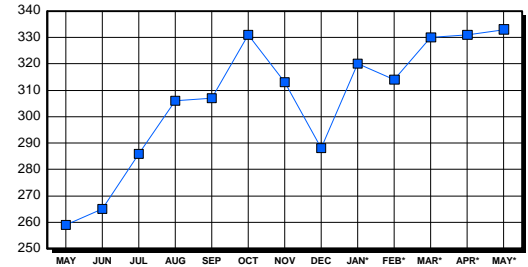
## Residential Market Report Single Family Homes May 2003

### LISTINGS

Price Range	New This Month			Total Active		
	2003	2002	% Change	2003	2002	% Change
0-149999	3	9	-66.7	7	13	-46.2
150000-299999	79	56	41.1	105	84	25.0
300000-449999	48	29	65.5	103	79	30.4
450000-599999	19	11	72.7	39	27	44.4
600000-749999	7	2	250.0	19	12	58.3
750000-999999	6	2	200.0	17	11	54.5
1000000 & Over	6	7	-14.3	43	33	30.3
<b>Grand Total:</b>	<b>168</b>	<b>116</b>	<b>44.8</b>	<b>333</b>	<b>259</b>	<b>28.6</b>

### INVENTORY TREND

Listings Active At End Of Month

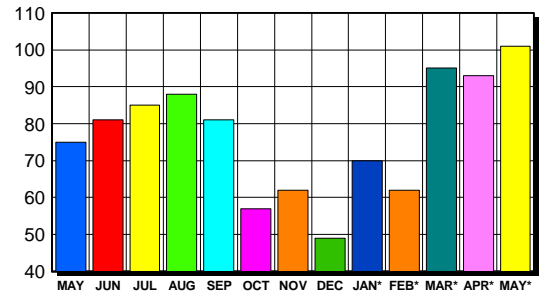


### CONTRACTS

Price Range	New This Month			Year-To-Date		
	2003	2002	% Change	2003	2002	% Change
0-149999	4	13	-69.2	24	43	-44.2
150000-299999	49	40	22.5	211	235	-10.2
300000-449999	32	15	113.3	126	94	34.0
450000-599999	11	3	266.7	41	28	46.4
600000-749999	2	1	100.0	9	10	-10.0
750000-999999	1	3	-66.7	3	10	-70.0
1000000 & Over	2	0	200.0	7	6	16.7
<b>Grand Total:</b>	<b>101</b>	<b>75</b>	<b>34.7</b>	<b>421</b>	<b>426</b>	<b>-1.2</b>

### SALES TREND

Contracts Ratified Per Month



### SETTLEMENTS

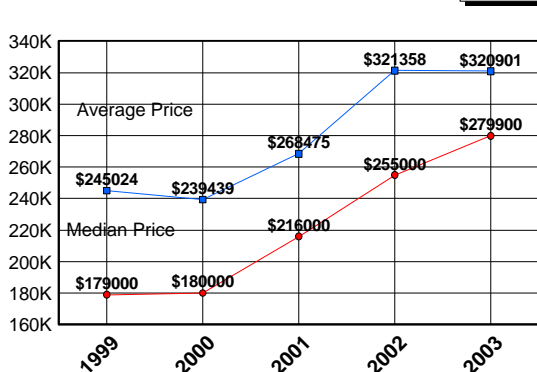
Price Range	New This Month			Year-To-Date		
	2003	2002	% Change	2003	2002	% Change
0-149999	4	2	100.0	22	37	-40.5
150000-299999	46	41	12.2	170	214	-20.6
300000-449999	25	17	47.1	104	77	35.1
450000-599999	4	2	100.0	31	22	40.9
600000-749999	2	1	100.0	8	11	-27.3
750000-999999	2	1	100.0	5	11	-54.5
1000000 & Over	1	3	-66.7	5	8	-37.5
<b>Grand Total:</b>	<b>84</b>	<b>67</b>	<b>25.4</b>	<b>345</b>	<b>380</b>	<b>-9.2</b>

### DATA SOURCE

Metropolitan Regional Information System (MRIS)

NOTES: Properties not listed through this Multiple Listing Service are not reflected. The term "sales" represents ratified purchase contracts. Current year information is preliminary and subject to revision. Current year- to- date contract information may not equal the sum of the monthly contract totals reported in previous issues. Prices are not adjusted for inflation.

### AVERAGE & MEDIAN PRICE



### MARKET BY PRICE RANGE

