

PRINCE WILLIAM COUNTY HOUSING REPORT

Residential Market Report

Condo/Co-ops

March

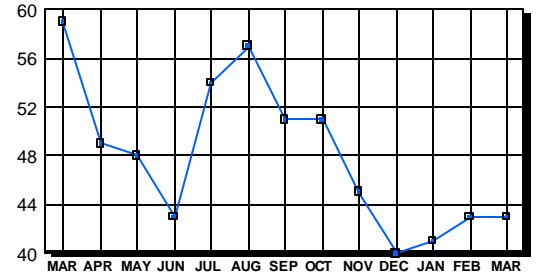
2004

LISTINGS

Condo/Co-ops Price Range	New This Month			Total Active		
	2004	2003	% Change	2004	2003	% Change
0-49999	1	0	100.0	2	1	100.0
50000-99999	2	6	-66.7	16	15	6.7
100000-149999	20	42	-52.4	6	16	-62.5
150000-199999	31	17	82.4	9	10	-10.0
200000-299999	19	7	171.4	3	17	-82.4
300000-399999	4	0	400.0	7	0	700.0
400000-499999	0	0	0.0	0	0	0.0
500000 & Over	0	0	0.0	0	0	0.0
Grand Total:	77	72	6.9	43	59	-27.1

INVENTORY TREND

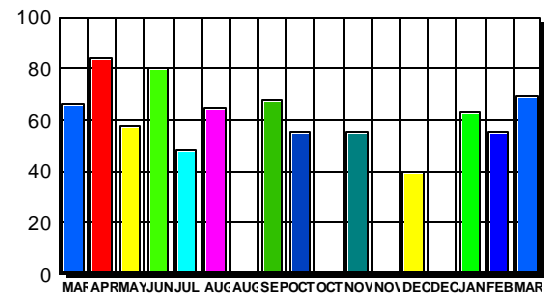
Listings Active At End Of Month



CONTRACTS

Condo/Co-ops Price Range	New This Month			Year-To-Date		
	2004	2003	% Change	2004	2003	% Change
0-49999	0	0	0.0	0	0	0.0
50000-99999	1	6	-83.3	13	23	-43.5
100000-149999	20	41	-51.2	50	93	-46.2
150000-199999	30	18	66.7	87	37	135.1
200000-299999	14	6	133.3	33	8	312.5
300000-399999	4	0	400.0	4	0	400.0
400000-499999	0	0	0.0	0	0	0.0
500000 & Over	0	0	0.0	0	0	0.0
Grand Total:	69	71	-2.8	187	161	16.1

SALES TREND



SETTLEMENTS

Condo/Co-ops Price Range	New This Month			Year-To-Date		
	2004	2003	% Change	2004	2003	% Change
0-49999	0	0	0.0	0	0	0.0
50000-99999	2	7	-71.4	14	22	-36.4
100000-149999	17	25	-32.0	45	71	-36.6
150000-199999	24	14	71.4	67	25	168.0
200000-299999	9	1	800.0	24	4	500.0
300000-399999	0	0	0.0	1	0	100.0
400000-499999	0	0	0.0	0	0	0.0
500000 & Over	0	0	0.0	0	0	0.0
Grand Total:	52	47	10.6	151	122	23.8

DATA SOURCE

Metropolitan Regional Information System (MRIS)

NOTES: Properties not listed through this Multiple Listing Service are not reflected. The term "sales" represents ratified purchase contracts. Current year information is preliminary and subject to revision. Current year-to-date contract information may not equal the sum of the monthly contract totals reported in previous issues. Prices are not adjusted for inflation.

