

# LOUDOUN COUNTY HOUSING REPORT

## Residential Market Report

### Condo/Co-ops

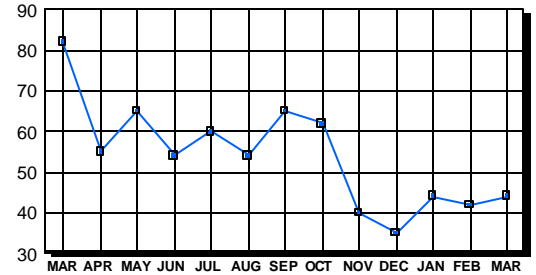
#### March 2004

### LISTINGS

Condo/Co-ops Price Range	New This Month			Total Active		
	2004	2003	% Change	2004	2003	% Change
0-49999	0	0	0.0	1	0	100.0
50000-99999	0	3	-300.0	4	5	-20.0
100000-149999	9	36	-75.0	7	25	-72.0
150000-199999	29	38	-23.7	8	20	-60.0
200000-299999	41	19	115.8	11	23	-52.2
300000-399999	5	3	66.7	12	7	71.4
400000-499999	2	0	200.0	1	0	100.0
500000 & Over	0	2	-200.0	0	2	-200.0
<b>Grand Total:</b>	<b>86</b>	<b>101</b>	<b>-14.9</b>	<b>44</b>	<b>82</b>	<b>-46.3</b>

### INVENTORY TREND

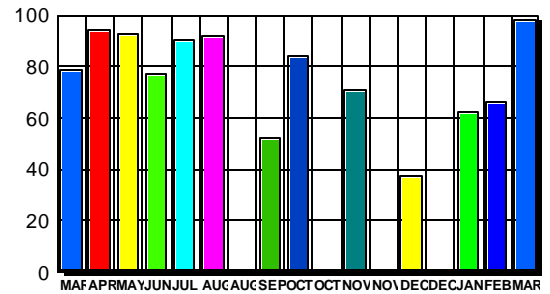
Listings Active At End Of Month



### CONTRACTS

Condo/Co-ops Price Range	New This Month			Year-To-Date		
	2004	2003	% Change	2004	2003	% Change
0-49999	0	0	0.0	0	0	0.0
50000-99999	0	2	-200.0	2	9	-77.8
100000-149999	11	31	-64.5	23	85	-72.9
150000-199999	30	36	-16.7	80	101	-20.8
200000-299999	51	13	292.3	107	30	256.7
300000-399999	5	4	25.0	11	7	57.1
400000-499999	1	0	100.0	3	2	50.0
500000 & Over	0	0	0.0	0	0	0.0
<b>Grand Total:</b>	<b>98</b>	<b>86</b>	<b>14.0</b>	<b>226</b>	<b>234</b>	<b>-3.4</b>

### SALES TREND



### SETTLEMENTS

Condo/Co-ops Price Range	New This Month			Year-To-Date		
	2004	2003	% Change	2004	2003	% Change
0-49999	0	0	0.0	0	0	0.0
50000-99999	2	4	-50.0	4	10	-60.0
100000-149999	3	26	-88.5	15	69	-78.3
150000-199999	22	35	-37.1	59	80	-26.3
200000-299999	38	5	660.0	74	14	428.6
300000-399999	4	1	300.0	8	4	100.0
400000-499999	2	0	200.0	5	1	400.0
500000 & Over	0	0	0.0	0	0	0.0
<b>Grand Total:</b>	<b>71</b>	<b>71</b>	<b>0.0</b>	<b>165</b>	<b>178</b>	<b>-7.3</b>

### DATA SOURCE

Metropolitan Regional Information System (MRIS)

NOTES: Properties not listed through this Multiple Listing Service are not reflected. The term "sales" represents ratified purchase contracts. Current year information is preliminary and subject to revision. Current year-to-date contract information may not equal the sum of the monthly contract totals reported in previous issues. Prices are not adjusted for inflation.

