

# ARLINGTON COUNTY HOUSING REPORT

## Residential Market Report

### Single Family Homes

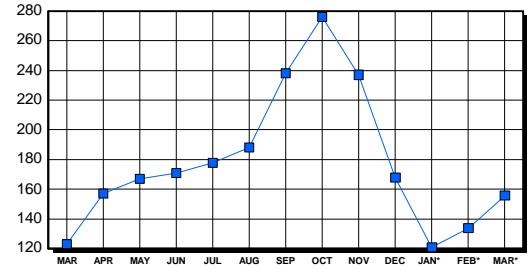
March 2003

#### LISTINGS

Price Range	New This Month			Total Active		
	2003	2002	% Change	2003	2002	% Change
0-149999	0	1	-100.0	1	1	0.0
150000-299999	20	31	-35.5	19	18	5.6
300000-449999	65	72	-9.7	29	31	-6.5
450000-599999	40	30	33.3	42	23	82.6
600000-749999	24	15	60.0	31	24	29.2
750000-999999	13	14	-7.1	19	17	11.8
1000000 & Over	6	2	200.0	15	9	66.7
<b>Grand Total:</b>	<b>168</b>	<b>165</b>	<b>1.8</b>	<b>156</b>	<b>123</b>	<b>26.8</b>

#### INVENTORY TREND

Listings Active At End Of Month

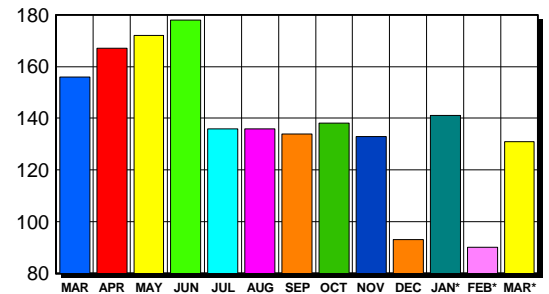


#### CONTRACTS

Price Range	New This Month			Year-To-Date		
	2003	2002	% Change	2003	2002	% Change
0-149999	0	1	-100.0	1	4	-75.0
150000-299999	16	32	-50.0	40	84	-52.4
300000-449999	55	67	-17.9	144	172	-16.3
450000-599999	29	38	-23.7	99	99	0.0
600000-749999	16	12	33.3	48	36	33.3
750000-999999	11	7	57.1	20	20	0.0
1000000 & Over	4	3	33.3	10	3	233.3
<b>Grand Total:</b>	<b>131</b>	<b>160</b>	<b>-18.1</b>	<b>362</b>	<b>418</b>	<b>-13.4</b>

#### SALES TREND

Contracts Ratified Per Month



#### SETTLEMENTS

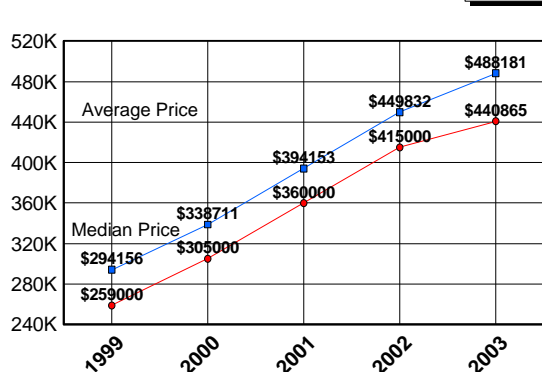
Price Range	New This Month			Year-To-Date		
	2003	2002	% Change	2003	2002	% Change
0-149999	0	2	-200.0	1	4	-75.0
150000-299999	7	22	-68.2	34	74	-54.1
300000-449999	41	50	-18.0	129	153	-15.7
450000-599999	27	26	3.8	84	59	42.4
600000-749999	13	12	8.3	41	25	64.0
750000-999999	7	7	0.0	23	13	76.9
1000000 & Over	1	0	100.0	2	1	100.0
<b>Grand Total:</b>	<b>96</b>	<b>119</b>	<b>-19.3</b>	<b>314</b>	<b>329</b>	<b>-4.6</b>

#### DATA SOURCE

Metropolitan Regional Information System (MRIS)

NOTES: Properties not listed through this Multiple Listing Service are not reflected. The term "sales" represents ratified purchase contracts. Current year information is preliminary and subject to revision. Current year- to- date contract information may not equal the sum of the monthly contract totals reported in previous issues. Prices are not adjusted for inflation.

#### AVERAGE & MEDIAN PRICE



#### MARKET BY PRICE RANGE

