

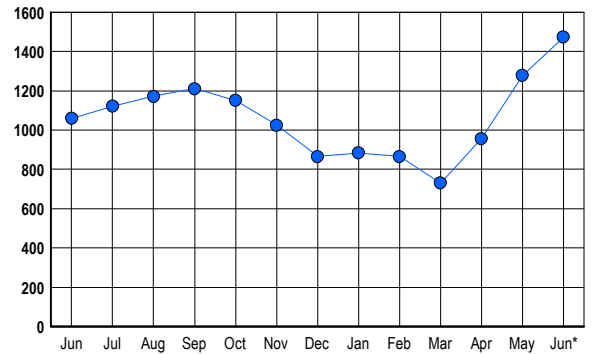


LISTINGS

Prices Range	New This Month			Total Actives		
	2005	2004	% Change	2005	2004	% Change
0 - 149,999	2	1	100.0	5	13	-61.5
150,000 - 199,999	1	1	0.0	1	14	-92.9
200,000 - 299,999	15	88	-83.0	7	61	-88.5
300,000 - 399,999	121	340	-64.4	67	199	-66.3
400,000 - 499,999	360	210	71.4	243	171	42.1
500,000 - 599,999	247	146	69.2	233	157	48.4
600,000 - 699,999	179	100	79.0	195	165	18.2
700,000 - 799,999	173	49	253.1	236	112	110.7
800,000 - 899,999	101	33	206.1	187	85	120.0
900,000 - 999,999	61	12	408.3	114	31	267.7
1,000,000 - 1,249,999	34	14	142.9	80	37	116.2
1,250,000 - 1,499,999	25	8	212.5	59	39	51.3
1,500,000 +	15	6	150.0	46	38	21.1
TOTALS	1334	1008	32.3	1473	1122	31.3

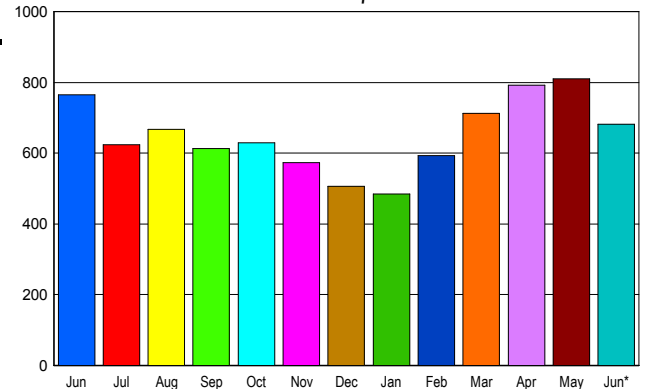
INVENTORY TREND

Listings Active at End of Month



SALES TREND

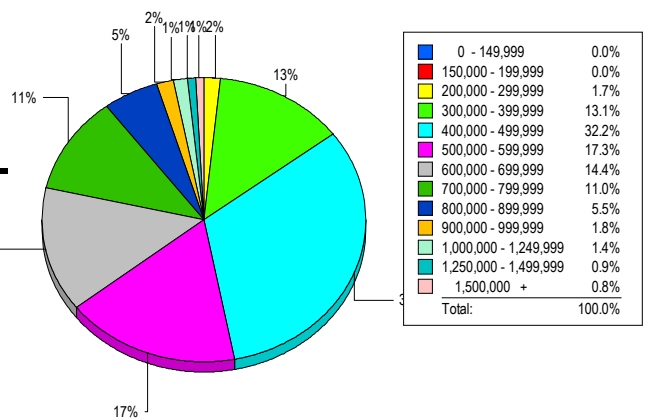
Contracts Ratified Per Month



CONTRACTS

Price Range	New This Month			Year-To-Date		
	2005	2004	% Change	2005	2004	% Change
0 - 149,999	1	0	100.0	5	8	-37.5
150,000 - 199,999	1	1	0.0	3	36	-91.7
200,000 - 299,999	12	88	-86.4	122	649	-81.2
300,000 - 399,999	81	282	-71.3	694	1,434	-51.6
400,000 - 499,999	236	164	43.9	1,270	814	56.0
500,000 - 599,999	117	106	10.4	666	635	4.9
600,000 - 699,999	93	75	24.0	509	372	36.8
700,000 - 799,999	77	23	234.8	337	157	114.6
800,000 - 899,999	31	11	181.8	158	81	95.1
900,000 - 999,999	8	7	14.3	78	40	95.0
1,000,000 - 1,249,999	13	2	550.0	65	35	85.7
1,250,000 - 1,499,999	9	5	80.0	43	22	95.5
1,500,000 +	4	2	100.0	26	13	100.0
TOTALS	683	766	-10.8	3976	4296	-7.4

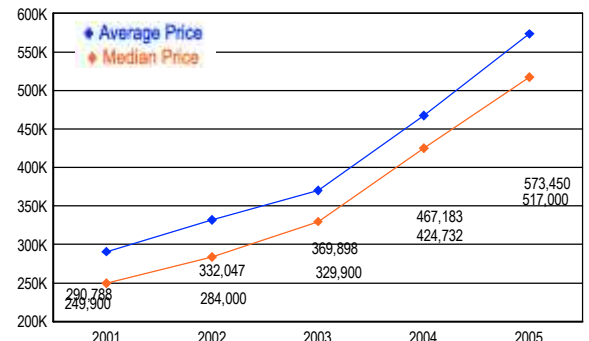
MARKET BY PRICE RANGE



SETTLEMENTS

Price Range	New This Month			Year-to-Date		
	2005	2004	% Change	2005	2004	% Change
0 - 149,999	0	0	0.0	5	8	-37.5
150,000 - 199,999	0	3	-100.0	2	43	-95.3
200,000 - 299,999	13	80	-83.8	117	591	-80.2
300,000 - 399,999	103	350	-70.6	629	1,296	-51.5
400,000 - 499,999	253	198	27.8	1,203	720	67.1
500,000 - 599,999	136	163	-16.6	649	518	25.3
600,000 - 699,999	113	103	9.7	452	276	63.8
700,000 - 799,999	86	34	152.9	299	118	153.4
800,000 - 899,999	43	18	138.9	140	46	204.3
900,000 - 999,999	14	9	55.6	56	37	51.4
1,000,000 - 1,249,999	11	7	57.1	63	22	186.4
1,250,000 - 1,499,999	7	3	133.3	24	10	140.0
1,500,000 +	6	2	200.0	18	9	100.0
TOTALS	785	970	-19.1	3657	3694	-1.0

AVERAGE & MEDIAN PRICE



DATA SOURCE: Metropolitan Regional Information Systems, Inc. (MRIS)

NOTES: Properties not listed through this Multiple Listing Service are not reflected. The term "sales" represents ratified purchase contracts. Current year information is preliminary and subject to revision. Current year-to-date contract information may not equal the sum of the monthly contract totals reported in