

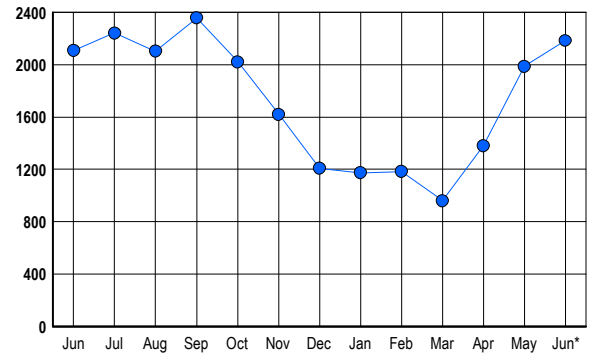


LISTINGS

Prices Range	New This Month			Total Actives		
	2005	2004	% Change	2005	2004	% Change
0 - 149,999	5	12	-58.3	20	60	-66.7
150,000 - 199,999	2	10	-80.0	1	47	-97.9
200,000 - 299,999	16	293	-94.5	5	169	-97.0
300,000 - 399,999	358	807	-55.6	125	391	-68.0
400,000 - 499,999	722	685	5.4	310	403	-23.1
500,000 - 599,999	634	389	63.0	395	248	59.3
600,000 - 699,999	477	212	125.0	361	169	113.6
700,000 - 799,999	280	138	102.9	234	137	70.8
800,000 - 899,999	171	84	103.6	157	89	76.4
900,000 - 999,999	125	57	119.3	118	71	66.2
1,000,000 - 1,249,999	87	41	112.2	100	76	31.6
1,250,000 - 1,499,999	87	37	135.1	131	68	92.6
1,500,000 +	89	58	53.4	227	179	26.8
TOTALS	3053	2823	8.1	2184	2107	3.7

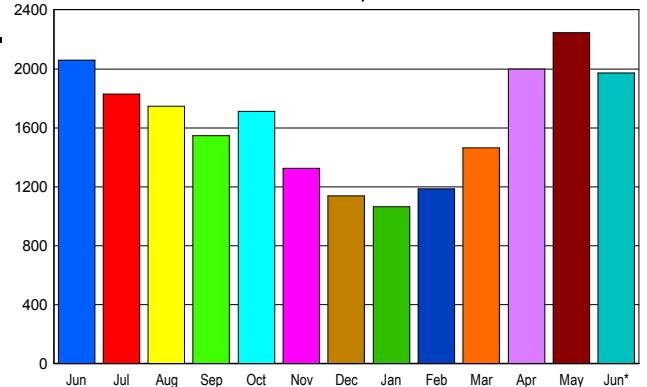
INVENTORY TREND

Listings Active at End of Month



SALES TREND

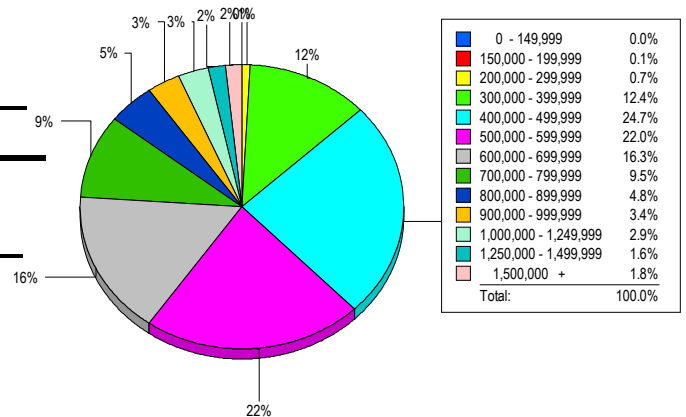
Contracts Ratified Per Month



CONTRACTS

Price Range	New This Month			Year-To-Date		
	2005	2004	% Change	2005	2004	% Change
0 - 149,999	0	0	0.0	3	8	-62.5
150,000 - 199,999	1	10	-90.0	9	71	-87.3
200,000 - 299,999	12	238	-95.0	217	1,674	-87.0
300,000 - 399,999	312	652	-52.1	1,813	3,241	-44.1
400,000 - 499,999	529	489	8.2	2,474	2,317	6.8
500,000 - 599,999	393	290	35.5	1,887	1,381	36.6
600,000 - 699,999	294	152	93.4	1,316	786	67.4
700,000 - 799,999	168	83	102.4	726	478	51.9
800,000 - 899,999	78	50	56.0	434	285	52.3
900,000 - 999,999	69	32	115.6	284	168	69.0
1,000,000 - 1,249,999	39	21	85.7	226	142	59.2
1,250,000 - 1,499,999	46	21	119.0	194	129	50.4
1,500,000 +	31	22	40.9	171	131	30.5
TOTALS	1972	2060	-4.3	9754	10811	-9.8

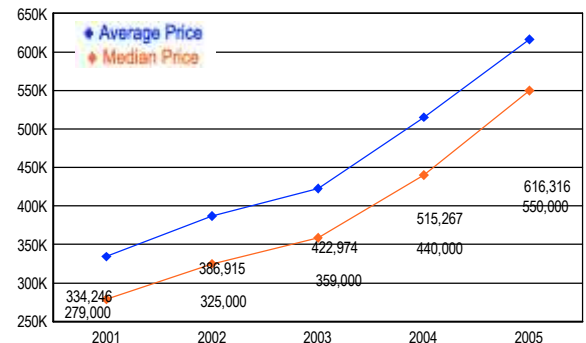
MARKET BY PRICE RANGE



SETTLEMENTS

Price Range	New This Month			Year-to-Date		
	2005	2004	% Change	2005	2004	% Change
0 - 149,999	0	1	-100.0	3	7	-57.1
150,000 - 199,999	1	5	-80.0	6	67	-91.0
200,000 - 299,999	13	245	-94.7	183	1,439	-87.3
300,000 - 399,999	246	717	-65.7	1,448	2,891	-49.9
400,000 - 499,999	491	614	-20.0	2,179	2,028	7.4
500,000 - 599,999	439	375	17.1	1,669	1,137	46.8
600,000 - 699,999	325	217	49.8	1,171	701	67.0
700,000 - 799,999	189	127	48.8	638	398	60.3
800,000 - 899,999	95	80	18.8	351	247	42.1
900,000 - 999,999	67	49	36.7	222	133	66.9
1,000,000 - 1,249,999	58	53	9.4	197	145	35.9
1,250,000 - 1,499,999	32	35	-8.6	137	89	53.9
1,500,000 +	35	34	2.9	144	100	44.0
TOTALS	1991	2552	-22.0	8348	9382	-11.0

AVERAGE & MEDIAN PRICE



DATA SOURCE: Metropolitan Regional Information Systems, Inc. (MRIS)

NOTES: Properties not listed through this Multiple Listing Service are not reflected. The term "sales" represents ratified purchase contracts. Current year information is preliminary and subject to revision. Current year-to-date contract information may not equal the sum of the monthly contract totals reported in