

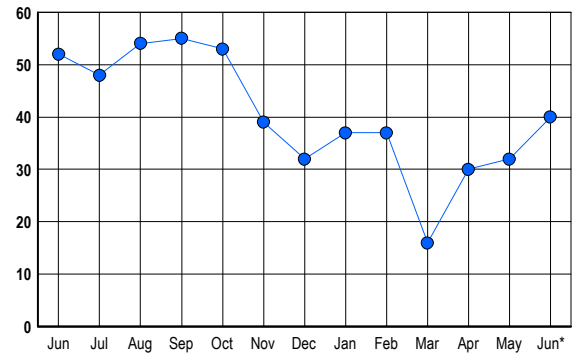


LISTINGS

Prices Range	New This Month			Total Actives		
	2005	2004	% Change	2005	2004	% Change
0 - 149,999	0	0	0.0	0	1	-100.0
150,000 - 199,999	0	0	0.0	0	2	-100.0
200,000 - 299,999	1	2	-50.0	0	4	-100.0
300,000 - 399,999	3	13	-76.9	1	8	-87.5
400,000 - 499,999	8	22	-63.6	6	18	-66.7
500,000 - 599,999	14	8	75.0	7	11	-36.4
600,000 - 699,999	14	2	600.0	14	2	600.0
700,000 - 799,999	5	1	400.0	5	2	150.0
800,000 - 899,999	1	4	-75.0	1	1	0.0
900,000 - 999,999	1	1	0.0	1	3	-66.7
1,000,000 - 1,249,999	2	0	200.0	3	0	300.0
1,250,000 - 1,499,999	3	0	300.0	2	0	200.0
1,500,000 +	0	0	0.0	0	0	0.0
TOTALS	52	53	-1.9	40	52	-23.1

INVENTORY TREND

Listings Active at End of Month

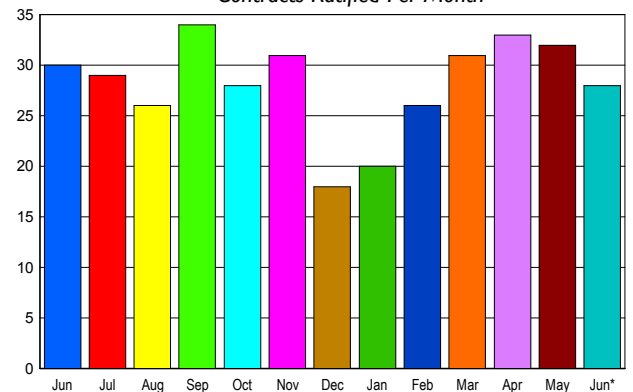


CONTRACTS

Price Range	New This Month			Year-To-Date		
	2005	2004	% Change	2005	2004	% Change
0 - 149,999	0	0	0.0	0	0	0.0
150,000 - 199,999	0	0	0.0	0	0	0.0
200,000 - 299,999	1	1	0.0	4	35	-88.6
300,000 - 399,999	4	10	-60.0	21	64	-67.2
400,000 - 499,999	5	8	-37.5	53	42	26.2
500,000 - 599,999	9	4	125.0	42	18	133.3
600,000 - 699,999	5	4	25.0	28	10	180.0
700,000 - 799,999	1	1	0.0	5	3	66.7
800,000 - 899,999	1	2	-50.0	5	5	0.0
900,000 - 999,999	1	0	100.0	5	0	500.0
1,000,000 - 1,249,999	0	0	0.0	2	2	0.0
1,250,000 - 1,499,999	1	0	100.0	1	0	100.0
1,500,000 +	0	0	0.0	0	0	0.0
TOTALS	28	30	-6.7	166	179	-7.3

SALES TREND

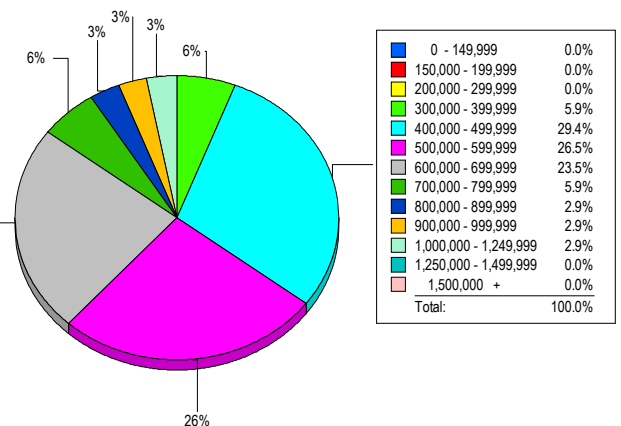
Contracts Ratified Per Month



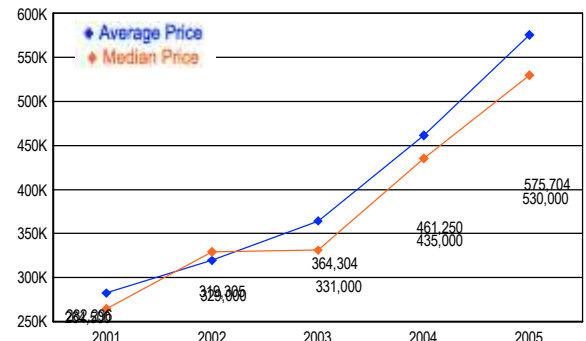
SETTLEMENTS

Price Range	New This Month			Year-to-Date		
	2005	2004	% Change	2005	2004	% Change
0 - 149,999	0	0	0.0	0	0	0.0
150,000 - 199,999	0	0	0.0	0	0	0.0
200,000 - 299,999	0	3	-100.0	2	39	-94.9
300,000 - 399,999	2	9	-77.8	18	55	-67.3
400,000 - 499,999	10	10	0.0	52	38	36.8
500,000 - 599,999	9	12	-25.0	42	22	90.9
600,000 - 699,999	8	2	300.0	24	8	200.0
700,000 - 799,999	2	0	200.0	5	3	66.7
800,000 - 899,999	1	1	0.0	3	1	200.0
900,000 - 999,999	1	0	100.0	5	2	150.0
1,000,000 - 1,249,999	1	0	100.0	3	0	300.0
1,250,000 - 1,499,999	0	0	0.0	0	0	0.0
1,500,000 +	0	0	0.0	0	0	0.0
TOTALS	34	37	-8.1	154	168	-8.3

MARKET BY PRICE RANGE



AVERAGE & MEDIAN PRICE



DATA SOURCE: Metropolitan Regional Information Systems, Inc. (MRIS)

NOTES: Properties not listed through this Multiple Listing Service are not reflected. The term "sales" represents ratified purchase contracts. Current year information is preliminary and subject to revision. Current year- to- date contract information may not equal the sum of the monthly contract totals reported in